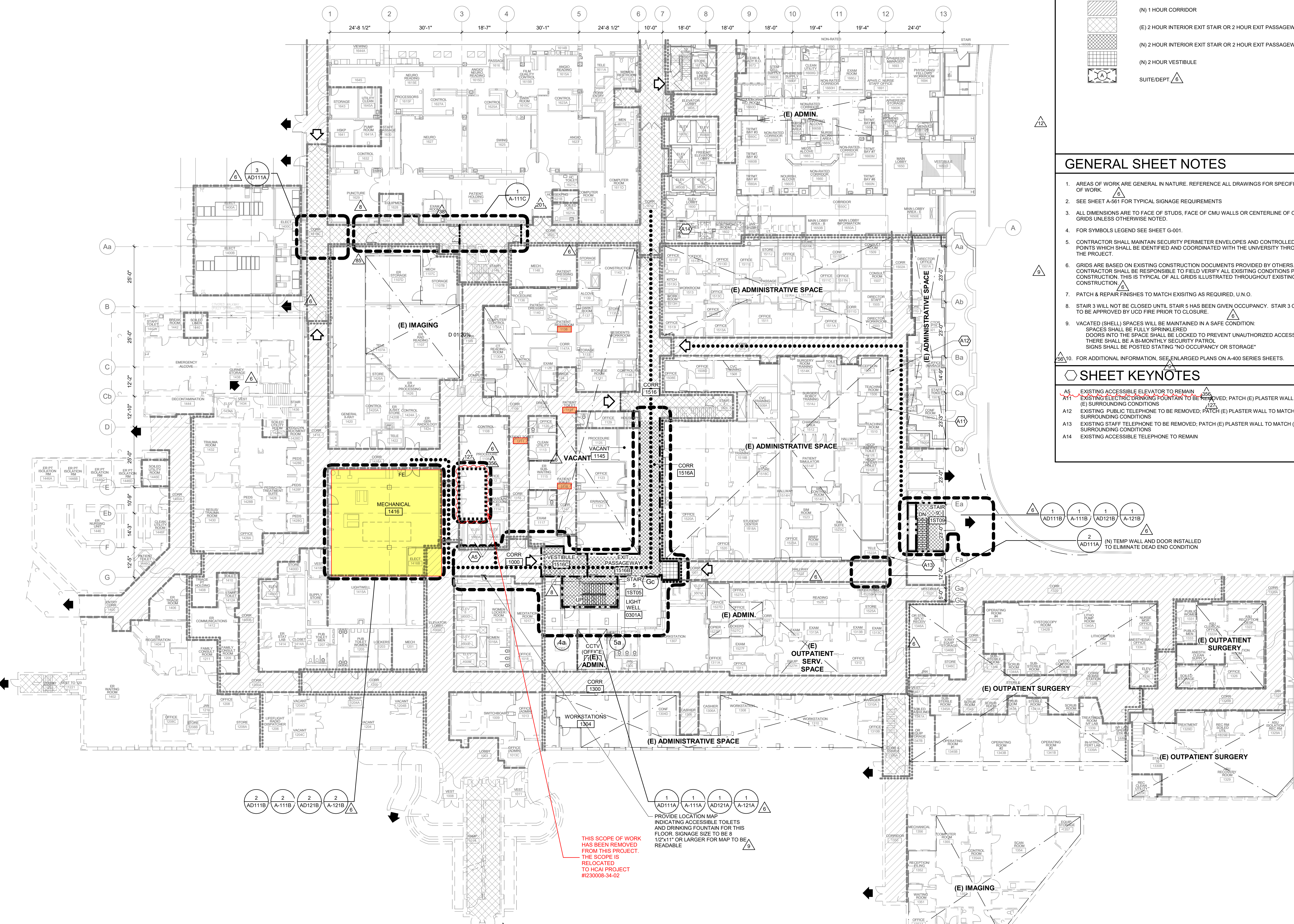


IF THIS SHEET IS NOT 30"x42", IT IS A REDUCED PRINT - SCALE ACCORDINGLY.

C:\Users\barbara.benedict\Documents\Revit\LocalFiles\013200-04_BIM_A\MASTER_R01_CENTRAL_Barbara.Benedict\WTPA.rvt

6/10/2024 4:07:53 PM

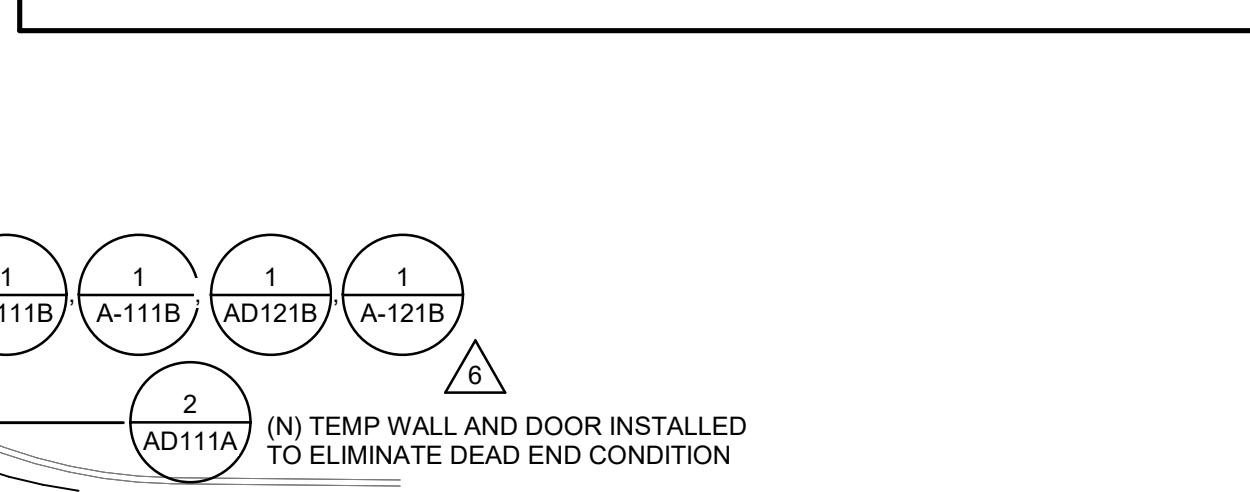


LEGEND

	EXISTING		NEW
	1 HOUR FIRE PARTITION		1 HOUR FIRE BARRIER OR 1 HOUR EXTERIOR WALL
	1 HOUR FIRE BARRIER OR 1 HOUR EXTERIOR WALL		2 HOUR FIRE BARRIER OR 1 HOUR EXTERIOR WALL
	2 HOUR FIRE BARRIER OR 1 HOUR EXTERIOR WALL		SMOKE BARRIER
	ACCESSIBLE PATH OF TRAVEL		EXIT ACCESS
	EXIT ACCESS		EXIT DISCHARGE
	(E) 1 HOUR CORRIDOR		(N) 1 HOUR CORRIDOR
	(E) 2 HOUR INTERIOR EXIT STAIR OR 2 HOUR EXIT PASSAGEWAY		(N) 2 HOUR INTERIOR EXIT STAIR OR 2 HOUR EXIT PASSAGEWAY
	(E) 2 HOUR VESTIBULE		(N) 2 HOUR VESTIBULE
	SUITE/DEPT.		

- ### GENERAL SHEET NOTES
- AREAS OF WORK ARE GENERAL IN NATURE. REFERENCE ALL DRAWINGS FOR SPECIFIC AREAS OF WORK.
 - SEE SHEET A-561 FOR TYPICAL SIGNAGE REQUIREMENTS.
 - ALL DIMENSIONS ARE TO FACE OF STUDS, FACE OF CMU WALLS OR CENTERLINE OF COLUMN GRIDS UNLESS OTHERWISE NOTED.
 - FOR SYMBOLS LEGEND SEE SHEET G-001.
 - CONTRACTOR SHALL MAINTAIN SECURITY PERIMETER ENVELOPES AND CONTROLLED ACCESS POINTS WHICH SHALL BE IDENTIFIED AND COORDINATED WITH THE UNIVERSITY THROUGHOUT THE PROJECT.
 - GRIDS ARE BASED ON EXISTING CONSTRUCTION DOCUMENTS PROVIDED BY OTHERS. CONTRACTOR SHALL BE RESPONSIBLE TO FIELD VERIFY ALL EXISTING CONDITIONS PRIOR TO CONSTRUCTION. THIS IS TYPICAL OF ALL GRIDS ILLUSTRATED THROUGHOUT EXISTING CONSTRUCTION.
 - PATCH & REPAIR FINISHES TO MATCH EXISTING AS REQUIRED, U.N.O.
 - STAIR 3 WILL NOT BE CLOSED UNTIL STAIR 5 HAS BEEN GIVEN OCCUPANCY. STAIR 3 CLOSURE TO BE APPROVED BY UCD FIRE PRIOR TO CLOSURE.
 - VACATED (SHELL) SPACES WILL BE MAINTAINED IN A SAFE CONDITION. SPACES SHALL BE FULLY SPRINKLERED. DOORS INTO THE SPACE SHALL BE LOCKED TO PREVENT UNAUTHORIZED ACCESS THERE SHALL BE A MONTHLY SECURITY PATROL. SIGNS SHALL BE POSTED STATING "NO OCCUPANCY OR STORAGE".
 - FOR ADDITIONAL INFORMATION, SEE ENLARGED PLANS ON A-400 SERIES SHEETS.

- ### SHEET KEYNOTES
- A5 EXISTING ACCESSIBLE ELEVATOR TO REMAIN
 - A11 EXISTING ELECTRIC DRINKING FOUNTAIN TO BE REMOVED; PATCH (E) PLASTER WALL TO MATCH (E) SURROUNDING CONDITIONS
 - A12 EXISTING PUBLIC TELEPHONE TO BE REMOVED; PATCH (E) PLASTER WALL TO MATCH (E) SURROUNDING CONDITIONS
 - A13 EXISTING STAFF TELEPHONE TO BE REMOVED; PATCH (E) PLASTER WALL TO MATCH (E) SURROUNDING CONDITIONS
 - A14 EXISTING ACCESSIBLE TELEPHONE TO REMAIN



1 FLOOR PLAN - FIRST FLOOR
1/16" = 1'-0"

UCD MC
UC DAVIS MEDICAL CENTER

UCDAVIS HEALTH SYSTEM
FACILITIES DESIGN & CONSTRUCTION
4800 2ND AVENUE, SUITE 3010
SACRAMENTO, CALIFORNIA 95817
(916)734-7024

LIONAKIS

1919 Nineteenth Street
Sacramento CA 95811
P 916.558.1900 F 916.558.1919
www.lionakis.com

CONSULTANT

ARCHITECT

OSHPD No: I140010-34-03

I140010-34-00-ACD0230

REVIEWED IN ACCORDANCE WITH THE REQUIREMENTS OF T24, CCR

APPROVED

Department of Health Care Access & Information
Office of Statewide Hospital Planning & Development
10/18/2024, 1:35:23 PM
I140010-34-00-ACD0230
Tony Tan

REV	DESCRIPTION	DATE
85	CO-050	03/15/22
127	CO-069	06/29/22
201	CO-091	02/23/23
356	CO-128	5/13/24

2315 STOCKTON BLVD.,
SACRAMENTO, CA 95817

KEY PLAN

ACCOUNT NO:
9559040

OSHPD NO:
I140010-34-03

BUILDING:
MAIN HOSPITAL

WING/FLOOR:
EAST WING

PROJECT TITLE:
HOSPITAL SEISMIC UPGRADE - INCREMENT 3 NORTH/SOUTH WING DEMO MAKE READY

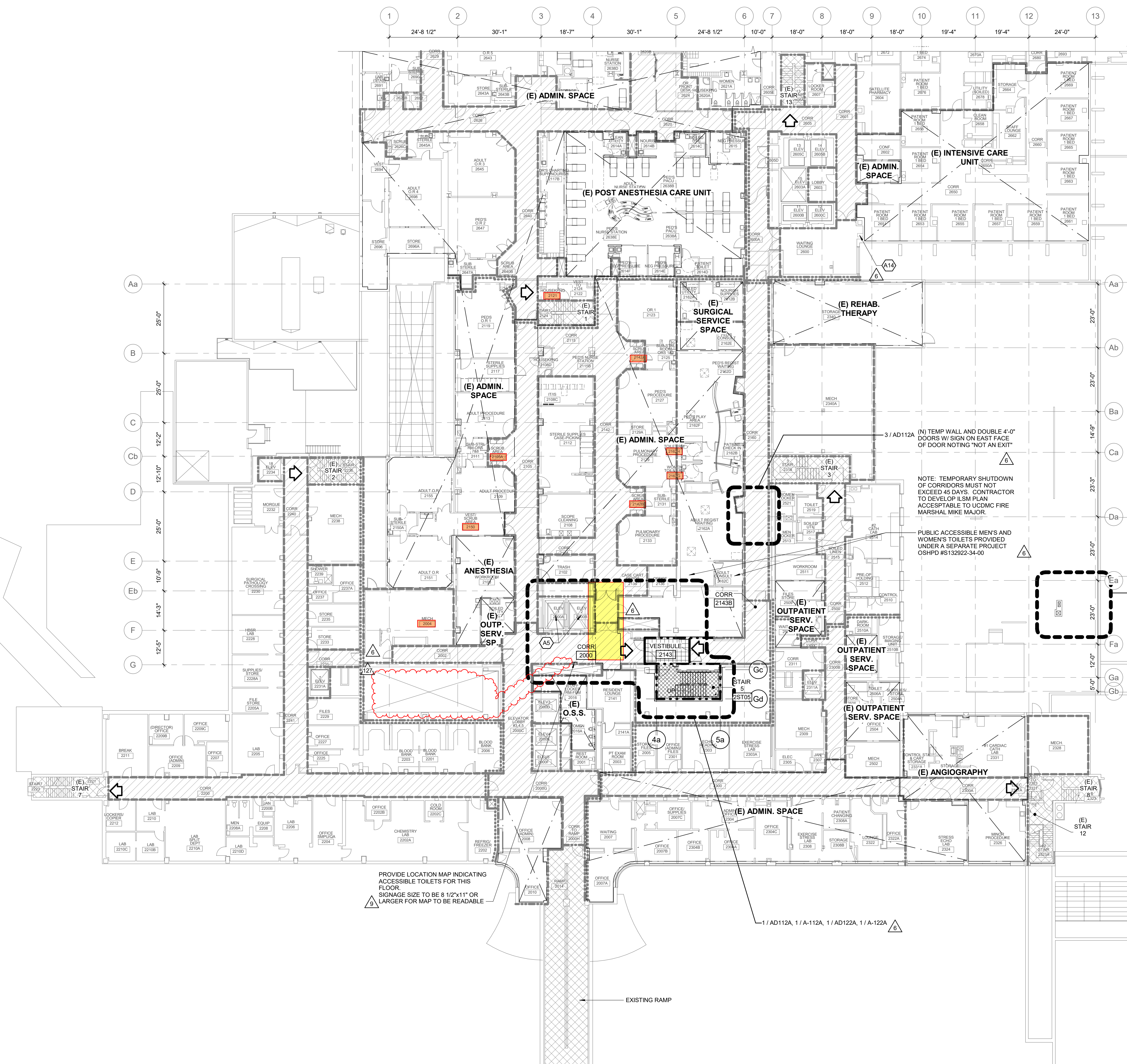
SHEET TITLE:
FLOOR PLAN - FIRST FLOOR

ARCH/ENGR. OF REC DON MARIANO	JOB NO. 013200.04	SHEET NO. A-101
PROJECT MANAGER DON MARIANO	SCALE As indicated	REVISION 03/12/18
DESIGNED BY STEVEN SUGIOKA	DATE 12/17/14	SHEET OF
DRAWN BY JH, WN, RD	PRE DRIVING NO.	
UCDMC DRAWING NO. 9559040		

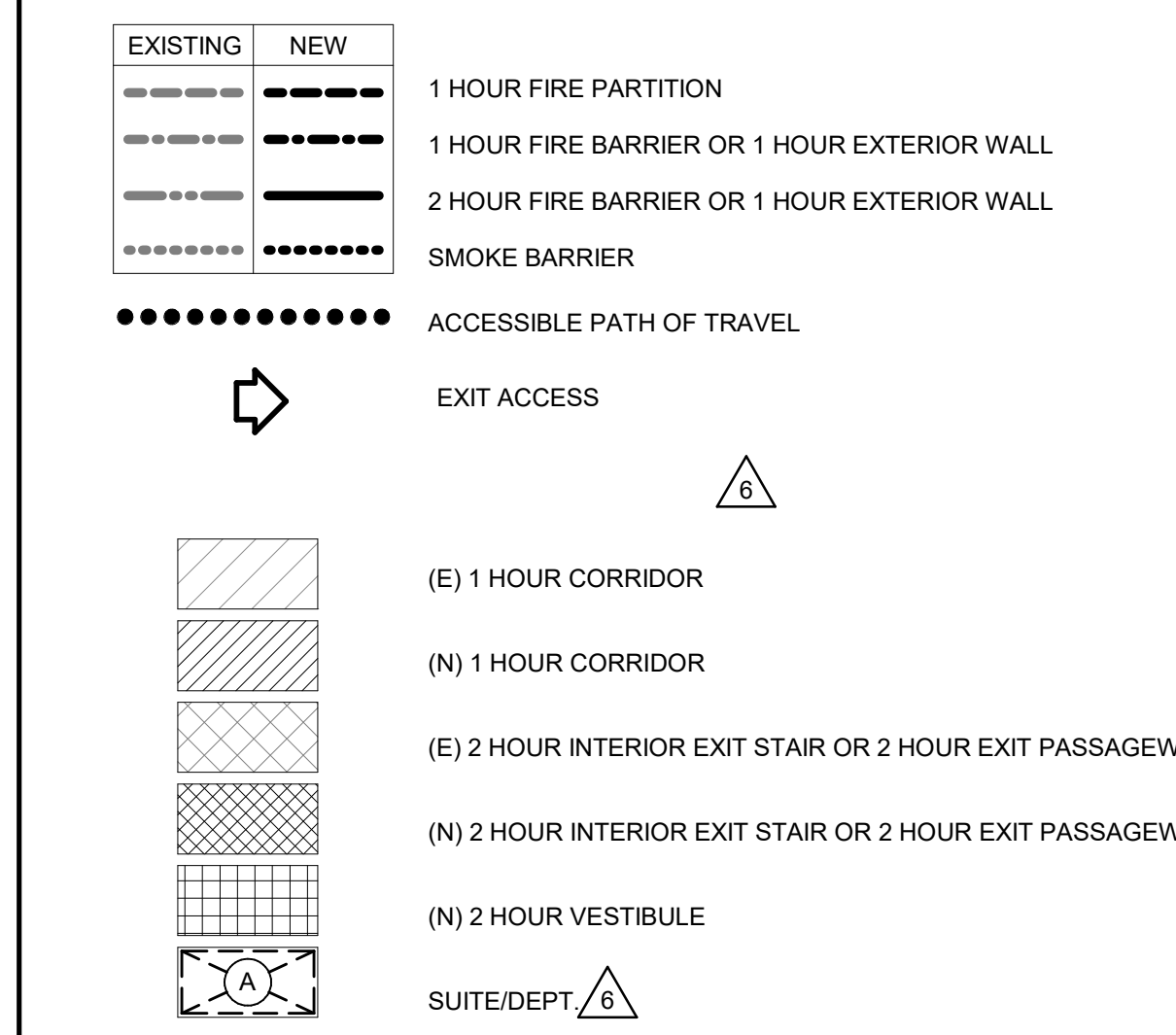
IF THIS SHEET IS NOT 30"x42", IT IS A REDUCED PRINT - SCALE ACCORDINGLY

C:\Users\cabe.wong\Documents\Revit\osfiles\013200-04_BIM_A-MASTER_R02_CENTRAL_cabe.wong\15E1.rvt

6/29/2022 10:21:58 AM



LEGEND



GENERAL SHEET NOTES

- AREAS OF WORK ARE GENERAL IN NATURE. REFERENCE ALL DRAWINGS FOR SPECIFIC AREAS OF WORK.
 - SEE SHEET A-561 FOR TYPICAL SIGNAGE REQUIREMENTS
 - ALL DIMENSIONS ARE TO FACE OF STUDS, FACE OF CMU WALLS OR CENTERLINE OF COLUMN GRIDS UNLESS OTHERWISE NOTED.
 - FOR SYMBOLS LEGEND SEE SHEET G-001.
 - CONTRACTOR SHALL MAINTAIN SECURITY PERIMETER ENVELOPES AND CONTROLLED ACCESS POINTS WHICH SHALL BE IDENTIFIED AND COORDINATED WITH THE UNIVERSITY THROUGHOUT THE PROJECT.
 - GRIDS ARE BASED ON EXISTING CONSTRUCTION DOCUMENTS PROVIDED BY OTHERS. CONTRACTOR SHALL BE RESPONSIBLE TO FIELD VERIFY ALL EXISTING CONDITIONS PRIOR TO CONSTRUCTION. THIS IS TYPICAL OF ALL GRIDS ILLUSTRATED THROUGHOUT EXISTING CONSTRUCTION.
 - PATCH & REPAIR FINISHES TO MATCH EXISTING AS REQUIRED, U.N.O.
 - STAIR 3 WILL NOT BE CLOSED UNTIL STAIR 5 HAS BEEN GIVEN OCCUPANCY. STAIR 3 CLOSURE TO BE APPROVED BY UCD FIRE PRIOR TO CLOSURE.
 - VACATED (SHELL) SPACES WILL BE MAINTAINED IN A SAFE CONDITION: SPACES SHALL BE FULLY SPRINKLERED DOORS INTO THE SPACE SHALL BE LOCKED TO PREVENT UNAUTHORIZED ACCESS THERE SHALL BE A BI-MONTHLY SECURITY PATROL SIGNS SHALL BE POSTED STATING "NO OCCUPANCY OR STORAGE"
- FOR ADDITIONAL INFORMATION, SEE ENLARGED PLANS ON A-400 SERIES SHEETS.

SHEET KEYNOTES

- A5 EXISTING ACCESSIBLE ELEVATOR TO REMAIN
- A14 EXISTING ACCESSIBLE TELEPHONE TO REMAIN

SHEET ACCESSIBILITY NOTES

- ACCESSIBLE DRINKING FOUNTAIN LOCATED ON 1ST FLOOR, LESS THAN 200 LINEAR FEET FROM AREA OF WORK

UCD MC
UC DAVIS MEDICAL CENTER

UCDAVIS HEALTH SYSTEM
FACILITIES DESIGN & CONSTRUCTION
4800 2ND AVENUE, SUITE 3010
SACRAMENTO, CALIFORNIA 95817
(916)734-7024

LIONAKIS

1919 Nineteenth Street
Sacramento CA 95811
P 916.558.1900 F 916.558.1919
www.lionakis.com

CONSULTANT

ARCHITECT

ENGINEER

OSHPD No: I140010-34-03

I140010-34-00-ACD0164

REVIEWED IN ACCORDANCE WITH THE REQUIREMENTS OF T24, CCR

APPROVED

Department of Health Care Access and Information
FACILITIES DEVELOPMENT DIVISION
10/13/2022, 1:07:50 PM
I140010-34-00-ACD0164
Donald Harris

REV	DESCRIPTION	DATE
6	BACKCHECK 4	1/9/17
8	CHANGE ORDER 2	11/20/17
9	CHANGE ORDER 3	3/12/18
56	CO-031	08/31/21
127	CO-069	06/29/22

2315 STOCKTON BLVD., SACRAMENTO, CA 95817

KEY PLAN

ACCOUNT NO: **9559040**

OSHPD NO: **I140010-34-03**

BUILDING: **MAIN HOSPITAL**

WING/FLOOR: **EAST WING**

PROJECT TITLE: **HOSPITAL SEISMIC UPGRADE - INCREMENT 3 NORTH/SOUTH WING DEMO MAKE READY**

SHEET TITLE: **FLOOR PLAN - SECOND FLOOR**

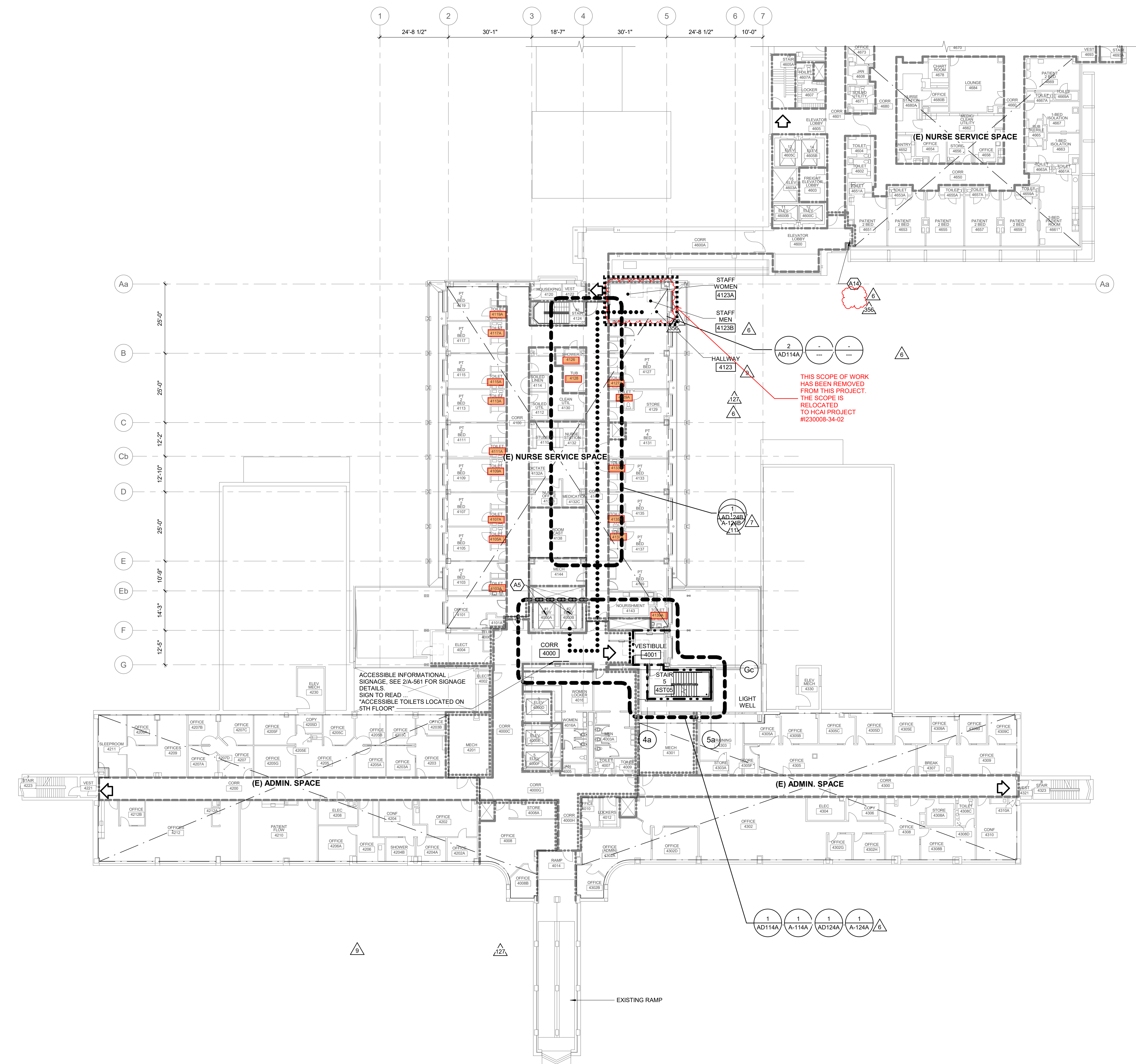
ARCH/ENGR. OF REC DON MARIANO	JOB NO. 013200.04	SHEET NO. A-102
PROJECT MANAGER DON MARIANO	SCALE As indicated	REVISION 03/12/18
DESIGNED BY STEVEN SUGIOKA	DATE 12/17/14	SHEET OF
DRAWN BY JH, WN, RD	PRE DRWG NO.	
UCDMC DRAWING NO. 9559040		

1 FLOOR PLAN - SECOND FLOOR
1/16" = 1'-0"

IF THIS SHEET IS NOT 30"x42", IT IS A REDUCED PRINT - SCALE ACCORDINGLY.

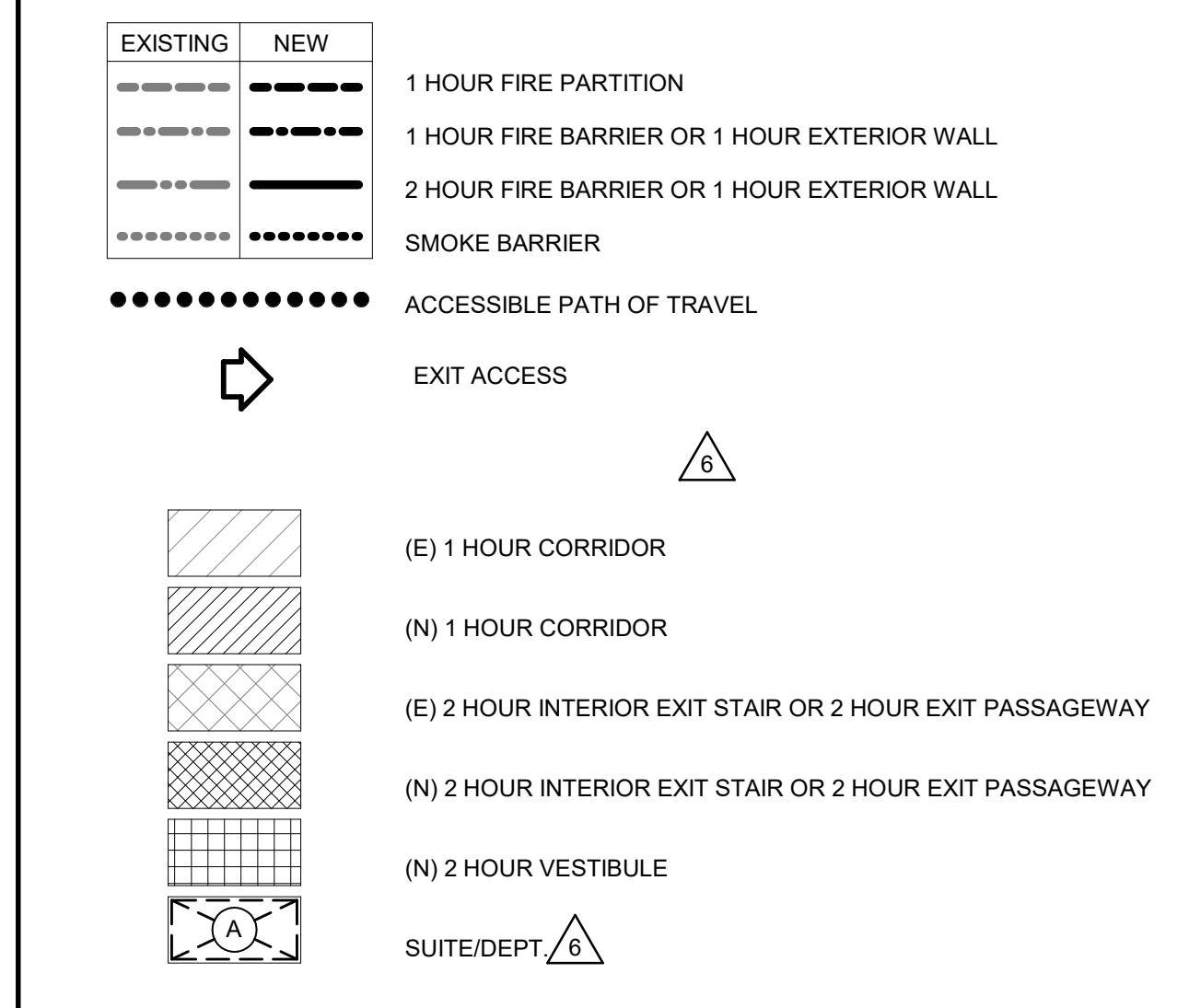
C:\Users\barbara.blende\Documents\Revit\LocalFiles\013200-04_BIM_A\MASTER_R04_CENTRAL_Barbara.Blende\WTPA.rvt

6/10/2024 3:08:05 PM



1 FLOOR PLAN - FOURTH FLOOR
1/16" = 1'-0"

LEGEND



GENERAL SHEET NOTES

- AREAS OF WORK ARE GENERAL IN NATURE. REFERENCE ALL DRAWINGS FOR SPECIFIC AREAS OF WORK.
- SEE SHEET A-561 FOR TYPICAL SIGNAGE REQUIREMENTS.
- ALL DIMENSIONS ARE TO FACE OF STUDS, FACE OF CMU WALLS OR CENTERLINE OF COLUMN GRIDS UNLESS OTHERWISE NOTED.
- FOR SYMBOLS LEGEND SEE SHEET G-001.
- CONTRACTOR SHALL MAINTAIN SECURITY PERIMETER ENVELOPES AND CONTROLLED ACCESS POINTS WHICH SHALL BE IDENTIFIED AND COORDINATED WITH THE UNIVERSITY THROUGHOUT THE PROJECT.
- CONTRACTOR SHALL BE RESPONSIBLE TO FIELD VERIFY ALL EXISTING CONDITIONS PRIOR TO CONSTRUCTION. THIS IS TYPICAL OF ALL GRIDS ILLUSTRATED THROUGHOUT EXISTING CONSTRUCTION.
- PATCH & REPAIR FINISHES TO MATCH EXISTING AS REQUIRED, U.N.O.
- STAIR 3 WILL NOT BE CLOSED UNTIL STAIR 5 HAS BEEN GIVEN OCCUPANCY. STAIR 3 CLOSURE TO BE APPROVED BY UCD FIRE PRIOR TO CLOSURE.
- VACATED (SHELL) SPACES WILL BE MAINTAINED IN A SAFE CONDITION: SPACES SHALL BE FULLY SPRINKLERED. DOORS INTO THE SPACE SHALL BE LOCKED TO PREVENT UNAUTHORIZED ACCESS. THERE SHALL BE A BI-MONTHLY SECURITY PATROL. SIGNS SHALL BE POSTED STATING "NO OCCUPANCY OR STORAGE".
- FOR ADDITIONAL INFORMATION, SEE ENLARGED PLANS ON A-400 SERIES SHEETS.

SHEET KEYNOTES

- A5 EXISTING ACCESSIBLE ELEVATOR TO REMAIN
- A14 EXISTING ACCESSIBLE TELEPHONE TO REMAIN

SHEET ACCESSIBILITY NOTES

UCD MC
UC DAVIS MEDICAL CENTER

UC DAVIS HEALTH SYSTEM
FACILITIES DESIGN & CONSTRUCTION
4800 2ND AVENUE, SUITE 3010
SACRAMENTO, CALIFORNIA 95817
(916)734-7024

LIONAKIS

1919 Nineteenth Street
Sacramento CA 95811
P 916.558.1900 F 916.558.1919
www.lionakis.com

CONSULTANT

ARCHITECT

ENGINEER

OSHPD No: I140010-34-03

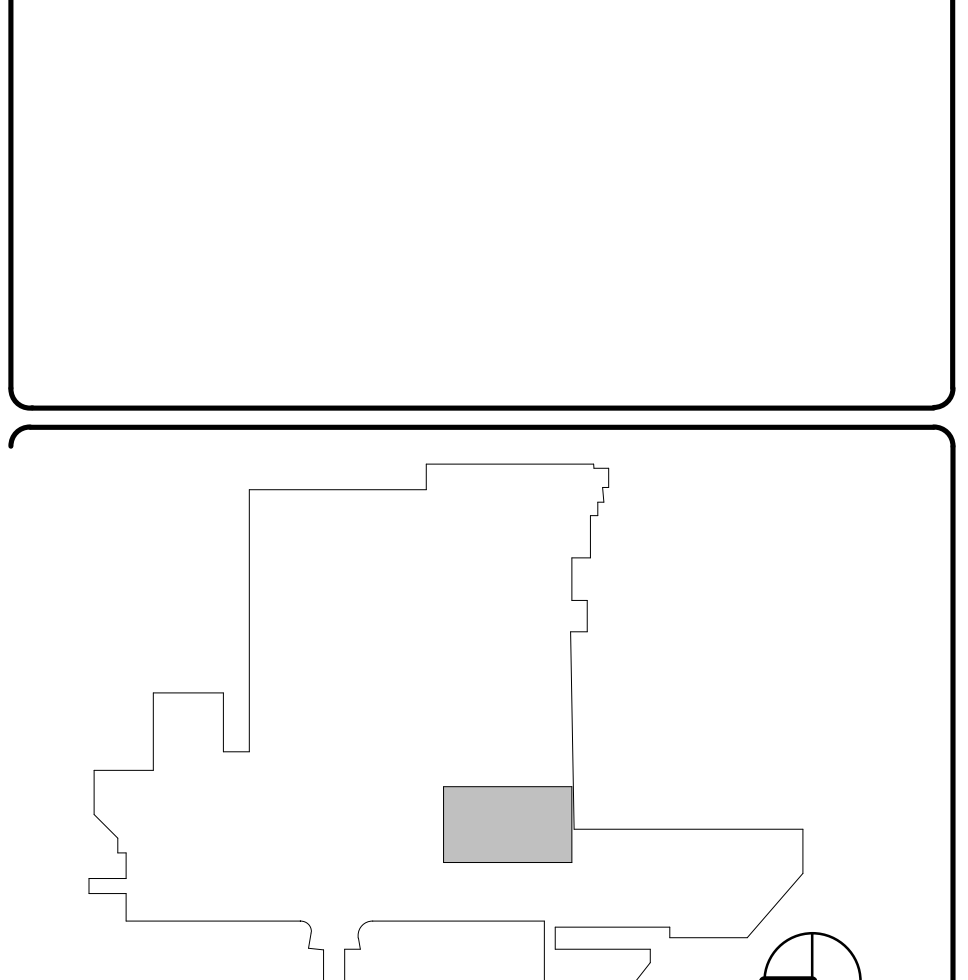
I140010-34-00-ACD0230

REVIEWED IN ACCORDANCE WITH THE REQUIREMENTS OF T24, CCR

APPROVED

Department of Health Care Access & Information
10/18/2024, 1:35:23 PM
I140010-34-00-ACD0230
Tony Tan

REV	DESCRIPTION	DATE
127	CO-069	06/29/22
356	CO-128	5/13/24



2315 STOCKTON BLVD.,
SACRAMENTO, CA 95817

ACCOUNT NO:
9559040

OSHPD NO:
I140010-34-03

BUILDING:
MAIN HOSPITAL

WING/FLOOR:
EAST WING

PROJECT TITLE:
HOSPITAL SEISMIC UPGRADE - INCREMENT 3 NORTH/SOUTH WING DEMO MAKE READY

SHEET TITLE:
FLOOR PLAN - FOURTH FLOOR

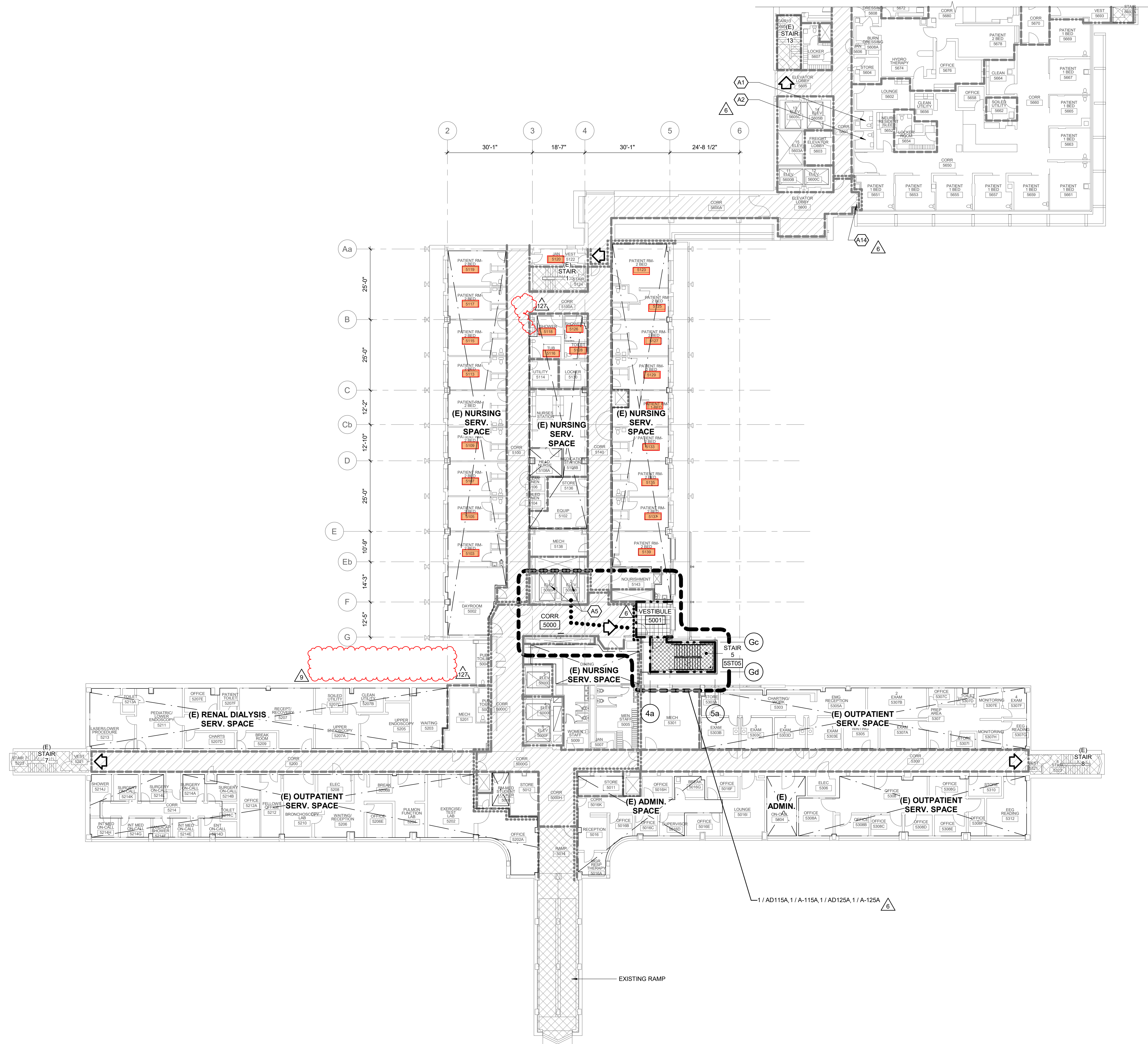
ARCH/ENGR. OF REC	JOB NO.	SHEET NO.
DON MARIANO	013200.04	A-104
PROJECT MANAGER DON MARIANO	SCALE As indicated	
DESIGNED BY STEVEN SUGIOKA	DATE 12/17/14	REVISION
DRAWN BY JH, WN, RD	PRE DRWG NO.	03/12/18
UCDMC DRAWING NO. 9559040	SHEET	OF

IF THIS SHEET IS NOT 30"x42", IT IS A REDUCED PRINT - SCALE ACCORDINGLY.

C

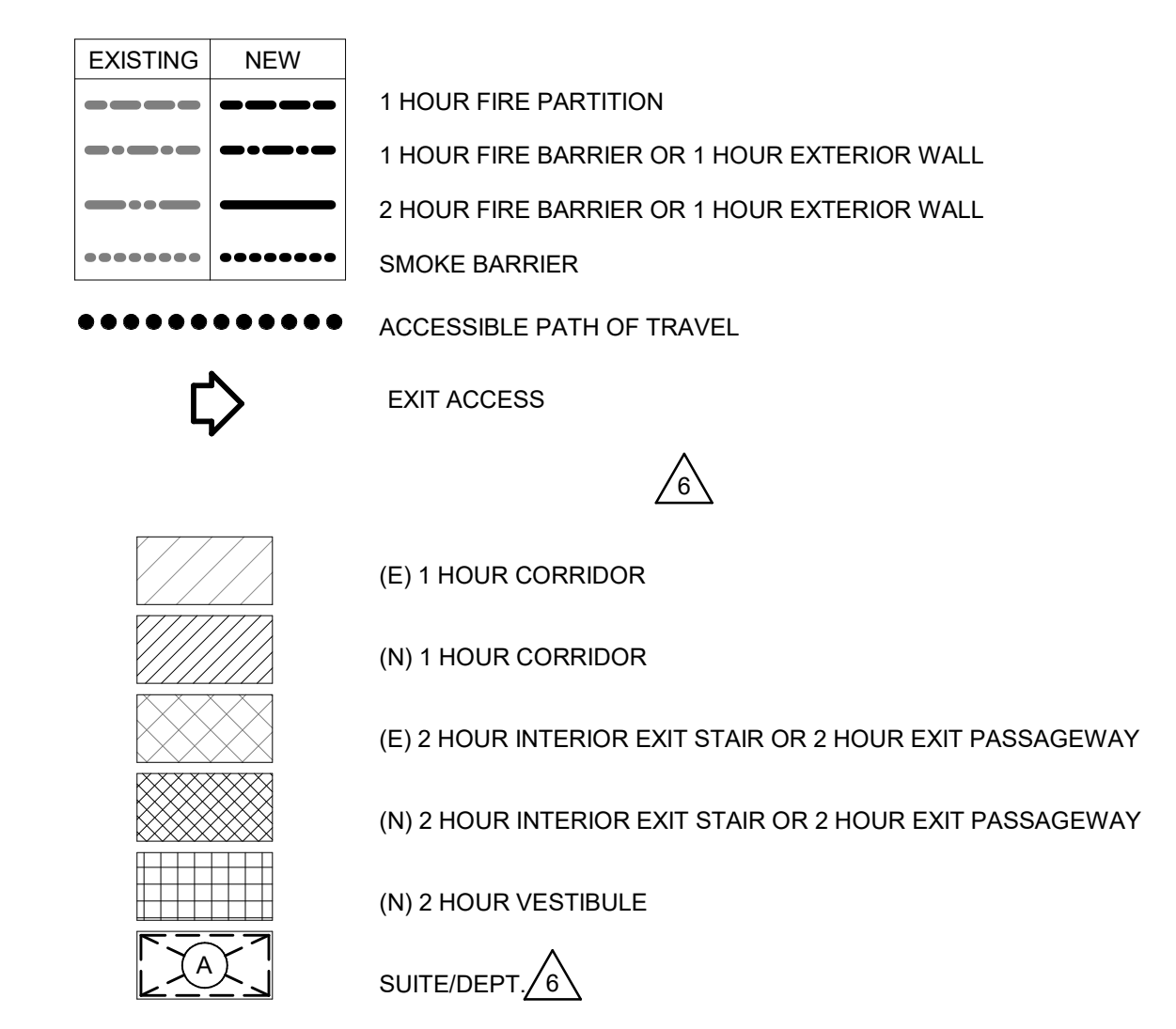
C:\Users\deena.maheshour\Documents\Revit\local\file013200-04_BIM_MASTER_R20_CENTRAL_Deena.Maheshour.rvt

7/7/2022 4:50:10 PM



1 FLOOR PLAN - FIFTH FLOOR
1/16" = 1'-0"

LEGEND



GENERAL SHEET NOTES

- AREAS OF WORK ARE GENERAL IN NATURE. REFERENCE ALL DRAWINGS FOR SPECIFIC AREAS OF WORK.
- SEE SHEET A-561 FOR TYPICAL SIGNAGE REQUIREMENTS.
- ALL DIMENSIONS ARE TO FACE OF STUDS, FACE OF CMU WALLS OR CENTERLINE OF COLUMN GRIDS UNLESS OTHERWISE NOTED.
- FOR SYMBOLS LEGEND SEE SHEET G-001.
- CONTRACTOR SHALL MAINTAIN SECURITY PERIMETER ENVELOPES AND CONTROLLED ACCESS POINTS WHICH SHALL BE IDENTIFIED AND COORDINATED WITH THE UNIVERSITY THROUGHOUT THE PROJECT.
- GRIDS ARE BASED ON EXISTING CONSTRUCTION DOCUMENTS PROVIDED BY OTHERS. CONTRACTOR SHALL BE RESPONSIBLE TO FIELD VERIFY ALL EXISTING CONDITIONS PRIOR TO CONSTRUCTION. THIS IS TYPICAL OF ALL GRIDS ILLUSTRATED THROUGHOUT EXISTING CONSTRUCTION.
- PATCH & REPAIR FINISHES TO MATCH EXISTING AS REQUIRED, U.N.O.
- STAIR 3 WILL NOT BE CLOSED UNTIL STAIR 5 HAS BEEN OPEN OCCUPANCY. STAIR 3 CLOSURE TO BE APPROVED BY UCD FIRE PRIOR TO CLOSURE.
- VACATED (SHELL) SPACES WILL BE MAINTAINED IN A SAFE CONDITION: SPACES SHALL BE FULLY SPRINKLERED. DOORS INTO THE SPACE SHALL BE LOCKED TO PREVENT UNAUTHORIZED ACCESS. THERE SHALL BE A BI-MONTHLY SECURITY PATROL. SIGNS SHALL BE POSTED STATING "NO OCCUPANCY OR STORAGE".
- FOR ADDITIONAL INFORMATION, SEE ENLARGED PLANS ON A-400 SERIES SHEETS.

SHEET KEYNOTES

- A1 EXISTING ACCESSIBLE PUBLIC TOILET ROOM MALE
- A2 EXISTING ACCESSIBLE PUBLIC TOILET ROOM FEMALE
- A5 EXISTING ACCESSIBLE ELEVATOR TO REMAIN
- A14 EXISTING ACCESSIBLE TELEPHONE TO REMAIN

SHEET ACCESSIBILITY NOTES

UCD MC
UC DAVIS MEDICAL CENTER

UCDAVIS HEALTH SYSTEM
FACILITIES DESIGN & CONSTRUCTION
4800 2ND AVENUE, SUITE 3010
SACRAMENTO, CALIFORNIA 95817
(916)734-7024

LIONAKIS

1919 Nineteenth Street
Sacramento CA 95811
P 916.558.1900 F 916.558.1919
www.lionakis.com

CONSULTANT

ARCHITECT

ENGINEER

OSHPD No: I140010-34-03

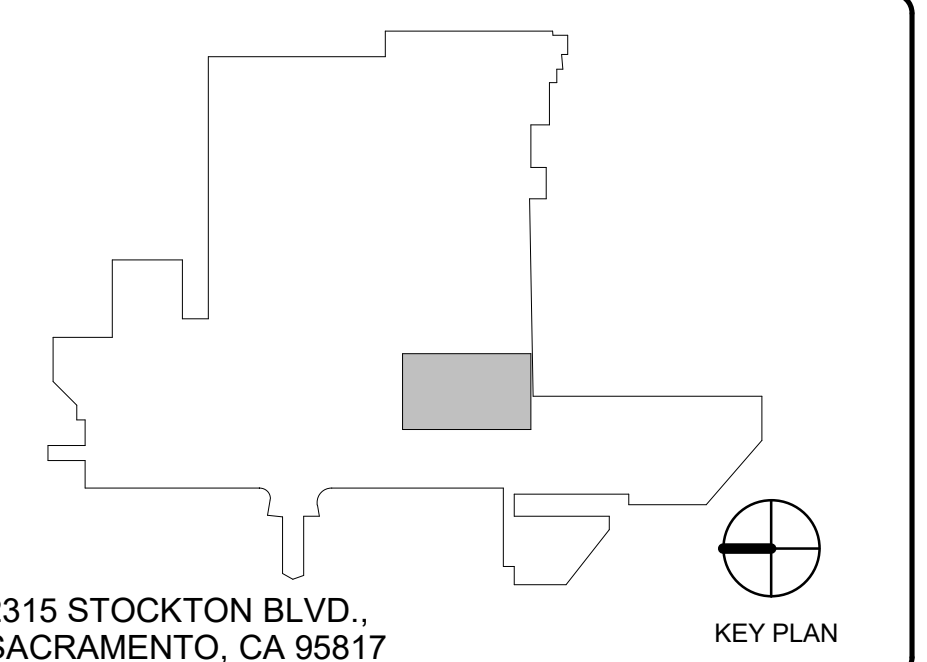
I140010-34-00-ACD0164

REVIEWED IN ACCORDANCE WITH THE REQUIREMENTS OF T24, CCR

APPROVED

Department of Health Care Access and Information
FACILITIES DEVELOPMENT DIVISION
10/13/2022, 1:07:50 PM
I140010-34-00-ACD0164
Donald Harris

REV	DESCRIPTION	DATE
6	BACKCHECK 4	1/9/17
7	CHANGE ORDER 1	3/29/17
8	CHANGE ORDER 2	1/12/17
9	CHANGE ORDER 3	3/12/18
56	CO-031	08/31/21
127	CO-069	06/29/22



ACCOUNT NO:
9559040

OSHPD NO:
I140010-34-03

BUILDING:
MAIN HOSPITAL

WING/FLOOR:
EAST WING

PROJECT TITLE:
HOSPITAL SEISMIC UPGRADE - INCREMENT 3 NORTH/SOUTH WING DEMO MAKE READY

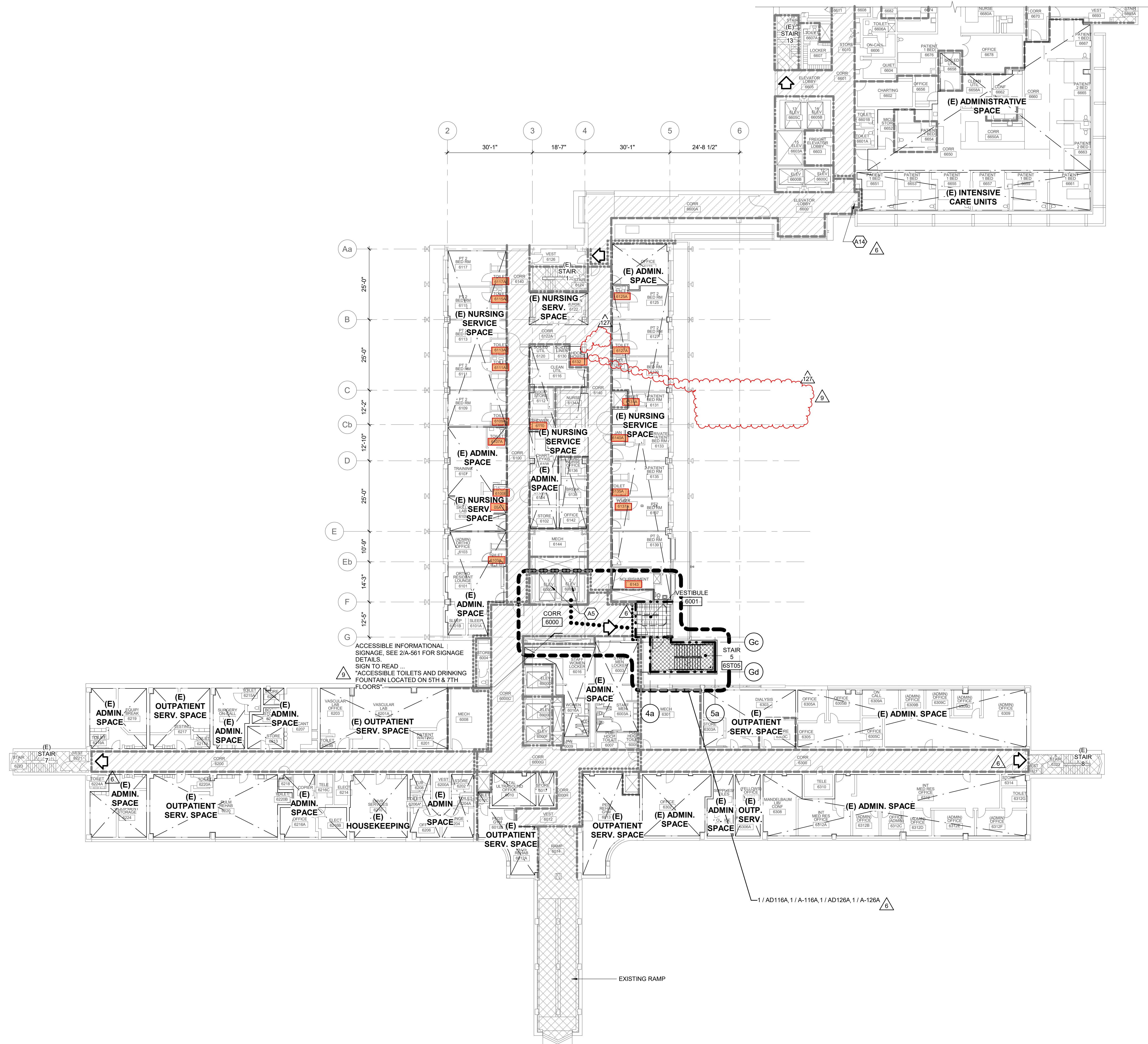
SHEET TITLE:
FLOOR PLAN - FIFTH FLOOR

ARCH/ENGR. OF REC	JOB NO.	SHEET NO.
DON MARIANO	013200.04	A-105
PROJECT MANAGER DON MARIANO	SCALE As indicated	
DESIGNED BY STEVEN SUGIOKA	DATE 12/17/14	REVISION
DRAWN BY JH, WN, RD	PRE DRWGNG NO.	03/12/18
UCDMC DRAWING NO. 9559040		SHEET OF

IF THIS SHEET IS NOT 30"x42", IT IS A REDUCED PRINT - SCALE ACCORDINGLY.

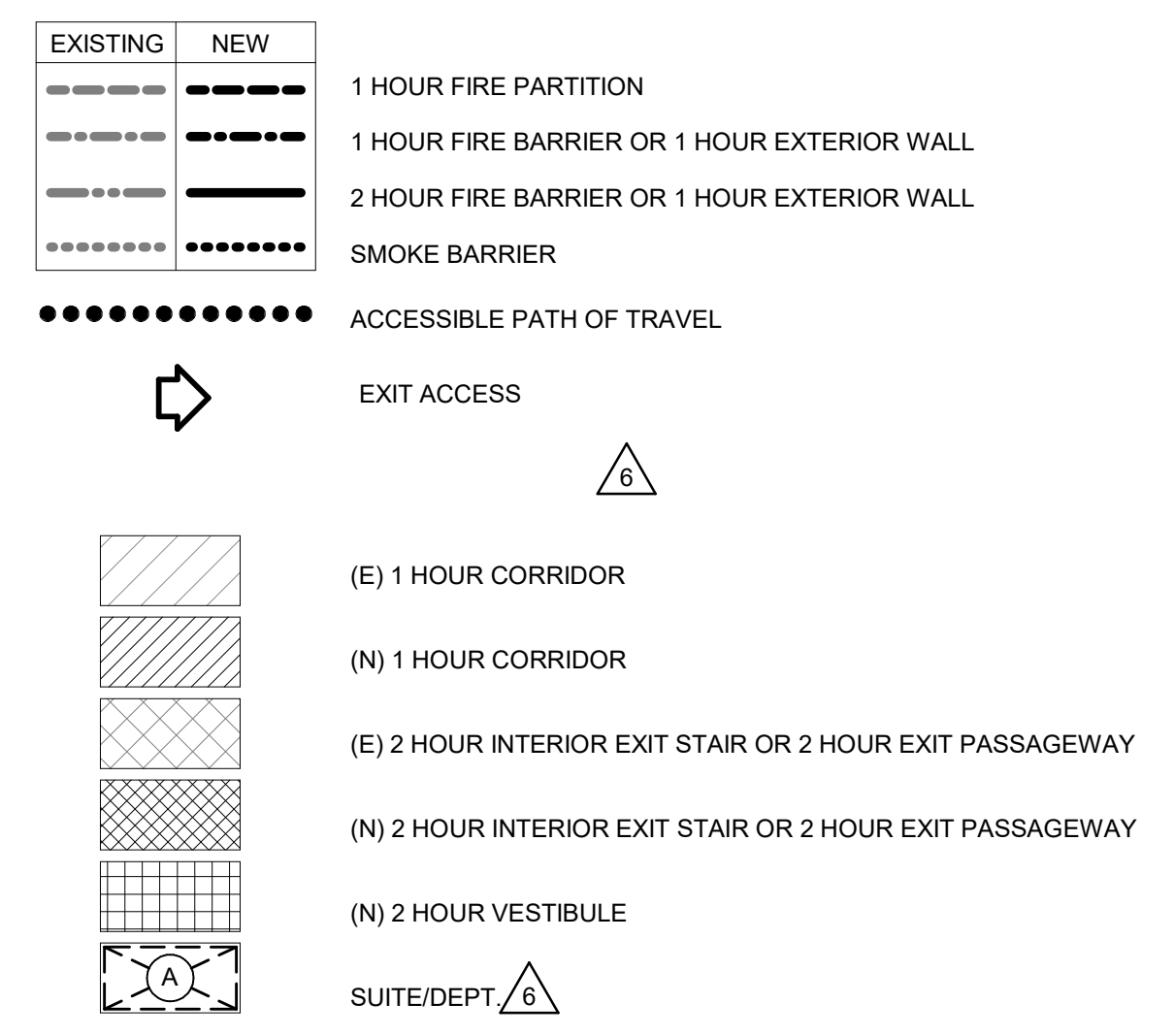
C:\Users\deena.maharaj\Documents\Revit\Local\Revit\1013200-04-BIM_MASTER_R20_CENTRAL_Deena.Maharaj.rvt

7/7/2022 4:50:16 PM



1 FLOOR PLAN - SIXTH FLOOR
1/16" = 1'-0"

LEGEND



GENERAL SHEET NOTES

- AREAS OF WORK ARE GENERAL IN NATURE. REFERENCE ALL DRAWINGS FOR SPECIFIC AREAS OF WORK.
- SEE SHEET A-561 FOR TYPICAL SIGNAGE REQUIREMENTS.
- ALL DIMENSIONS ARE TO FACE OF STUDS, FACE OF CMU WALLS OR CENTERLINE OF COLUMN GRIDS UNLESS OTHERWISE NOTED.
- FOR SYMBOLS LEGEND SEE SHEET G-001.
- CONTRACTOR SHALL MAINTAIN SECURITY PERIMETER ENVELOPES AND CONTROLLED ACCESS POINTS WHICH SHALL BE IDENTIFIED AND COORDINATED WITH THE UNIVERSITY THROUGHOUT THE PROJECT.
- GRIDS ARE BASED ON EXISTING CONSTRUCTION DOCUMENTS PROVIDED BY OTHERS. CONTRACTOR SHALL BE RESPONSIBLE TO FIELD VERIFY ALL EXISTING CONDITIONS PRIOR TO CONSTRUCTION. THIS IS TYPICAL OF ALL GRIDS ILLUSTRATED THROUGHOUT EXISTING CONSTRUCTION.
- PATCH & REPAIR FINISHES TO MATCH EXISTING AS REQUIRED. U.N.O.
- STAIR 3 WILL NOT BE CLOSED UNTIL STAIR 5 HAS BEEN GIVEN OCCUPANCY. STAIR 3 CLOSURE TO BE APPROVED BY UCD FIRE PRIOR TO CLOSURE.
- VACATED (SHELL) SPACES WILL BE MAINTAINED IN A SAFE CONDITION. SPACES SHALL BE FULLY SPRINKLERED. DOORS INTO THE SPACE SHALL BE LOCKED TO PREVENT UNAUTHORIZED ACCESS. THERE SHALL BE A BI-MONTHLY SECURITY PATROL. SIGNS SHALL BE POSTED STATING "NO OCCUPANCY OR STORAGE".
- FOR ADDITIONAL INFORMATION, SEE ENLARGED PLANS ON A-400 SERIES SHEETS.

SHEET KEYNOTES

- A5 - EXISTING ACCESSIBLE ELEVATOR TO REMAIN
- A14 - EXISTING ACCESSIBLE TELEPHONE TO REMAIN

SHEET ACCESSIBILITY NOTES

- ACCESSIBLE TOILET FACILITIES LOCATED ON 5th FLOOR, LESS THAN 200 LINEAR FEET FROM AREA OF WORK.

UCD UCDAVIS
MEDICAL CENTER MC HEALTH SYSTEM
UC DAVIS FACILITIES DESIGN & CONSTRUCTION
4800 2ND AVENUE, SUITE 3010
SACRAMENTO, CALIFORNIA 95817
(916)734-7024

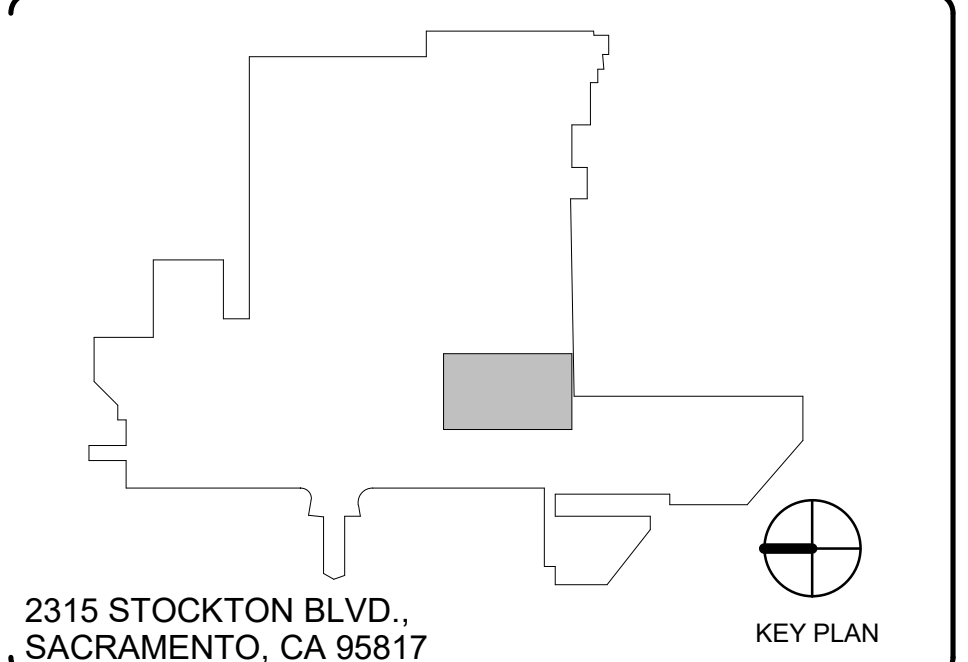
LIONAKIS
1919 Nineteenth Street
Sacramento CA 95811
P 916.558.1900 F 916.558.1919
www.lionakis.com

CONSULTANT

ARCHITECT ENGINEER
MICHAEL
C32325
STATE OF CALIFORNIA
LICENSED ARCHITECT

OSHPD No: I140010-34-03
I140010-34-00-ACD0164
REVIEWED IN ACCORDANCE WITH THE REQUIREMENTS OF T24, CCR
APPROVED
Department of Health Care Access and Information
FACILITIES DEVELOPMENT DIVISION
10/13/2022, 1:07:50 PM
I140010-34-00-ACD0164
Donald Harris

REV	DESCRIPTION	DATE
6	BACKCHECK 4	1/9/17
7	CHANGE ORDER 1	3/29/17
8	CHANGE ORDER 2	1/12/17
9	CHANGE ORDER 3	3/12/18
56	CO-031	08/31/21
127	CO-069	06/29/22



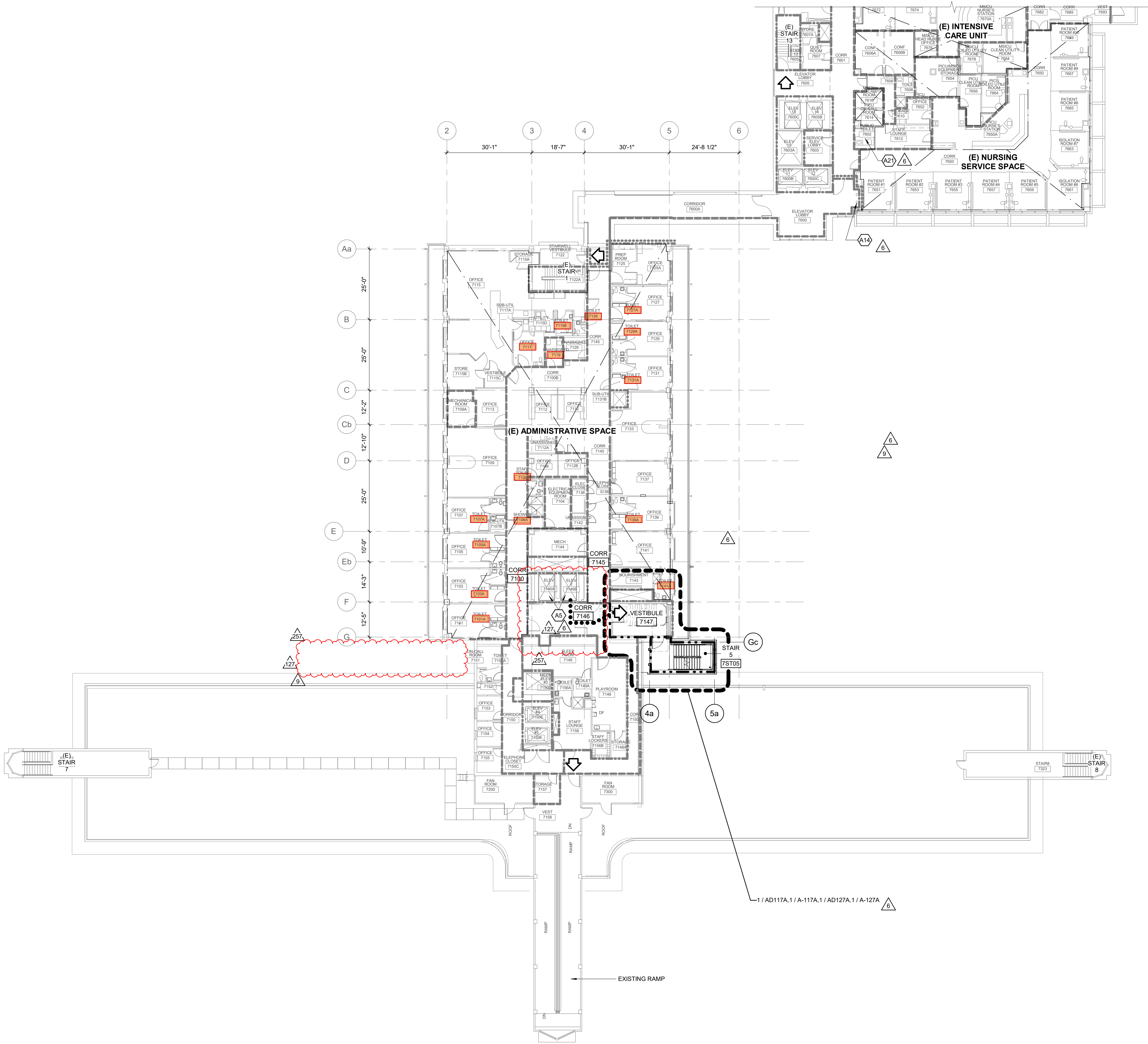
ACCOUNT NO: **9559040**
OSHPD NO: **I140010-34-03**
BUILDING: **MAIN HOSPITAL**
WING/FLOOR: **EAST WING**
PROJECT TITLE: **HOSPITAL SEISMIC UPGRADE - INCREMENT 3 NORTH/SOUTH WING DEMO MAKE READY**
SHEET TITLE: **FLOOR PLAN - SIXTH FLOOR**

ARCH/ENGR. OF REC	JOB NO.	SHEET NO.
DON MARIANO	013200.04	A-106
PROJECT MANAGER DON MARIANO	SCALE As indicated	REVISION
DESIGNED BY STEVEN SUGIOKA	DATE 12/17/14	03/12/18
DRAWN BY JH, WN, RD	PRE DRWG NO.	SHEET OF
UCDMC DRAWING NO. 9559040		

IF THIS SHEET IS NOT 30"x42", IT IS A REDUCED PRINT - SCALE ACCORDINGLY.

C:\Users\slg\OneDrive\Documents\Revit\LocalFiles\1013200-04_BIM_A\MASTER_P00_CENTRAL_flooring.dwg

10/20/2023 3:36:44 PM



1 FLOOR PLAN - SEVENTH FLOOR
1/16" = 1'-0"

LEGEND

- | | | | |
|--|----------|--|--|
| | EXISTING | | NEW |
| | | | 1 HOUR FIRE PARTITION |
| | | | 1 HOUR FIRE BARRIER OR 1 HOUR EXTERIOR WALL |
| | | | 2 HOUR FIRE BARRIER OR 1 HOUR EXTERIOR WALL |
| | | | SMOKE BARRIER |
| | | | ACCESSIBLE PATH OF TRAVEL |
| | | | EXIT ACCESS |
| | | | (E) 1 HOUR CORRIDOR |
| | | | (N) 1 HOUR CORRIDOR |
| | | | (E) 2 HOUR INTERIOR EXIT STAIR OR 2 HOUR EXIT PASSAGEWAY |
| | | | (N) 2 HOUR INTERIOR EXIT STAIR OR 2 HOUR EXIT PASSAGEWAY |
| | | | (N) 2 HOUR VESTIBULE |
| | | | SUITE/DEPT |

GENERAL SHEET NOTES

- AREAS OF WORK ARE GENERAL IN NATURE. REFERENCE ALL DRAWINGS FOR SPECIFIC AREAS OF WORK.
- SEE SHEET A-561 FOR TYPICAL SIGNAGE REQUIREMENTS
- ALL DIMENSIONS ARE TO FACE OF STUDS, FACE OF CMU WALLS OR CENTERLINE OF COLUMN GRIDS UNLESS OTHERWISE NOTED.
- FOR SYMBOLS LEGEND SEE SHEET G-001.
- CONTRACTOR SHALL MAINTAIN SECURITY PERIMETER ENVELOPES AND CONTROLLED ACCESS POINTS WHICH SHALL BE IDENTIFIED AND COORDINATED WITH THE UNIVERSITY THROUGHOUT THE PROJECT.
- GRIDS ARE BASED ON EXISTING CONSTRUCTION DOCUMENTS PROVIDED BY OTHERS. CONTRACTOR SHALL BE RESPONSIBLE TO FIELD VERIFY ALL EXISTING CONDITIONS PRIOR TO CONSTRUCTION. THIS IS TYPICAL OF ALL GRIDS ILLUSTRATED THROUGHOUT EXISTING CONSTRUCTION.
- PATCH & REPAIR FINISHES TO MATCH EXISTING AS REQUIRED, U.N.O.
- STAIR 3 WILL NOT BE CLOSED UNTIL STAIR 5 HAS BEEN GIVEN OCCUPANCY. STAIR 3 CLOSURE TO BE APPROVED BY UCD FIRE PRIOR TO CLOSURE.
- VACATED (SHELL) SPACES WILL BE MAINTAINED IN A SAFE CONDITION. SPACES SHALL BE FULLY SPRINKLERED. DOORS INTO THE SPACE SHALL BE LOCKED TO PREVENT UNAUTHORIZED ACCESS. THERE SHALL BE A BI-MONTHLY SECURITY PATROL. SIGNS SHALL BE POSTED STATING "NO OCCUPANCY OR STORAGE".
- FOR ADDITIONAL INFORMATION, SEE ENLARGED PLANS ON A-100 SERIES SHEETS.

SHEET KEYNOTES

- A5 EXISTING ACCESSIBLE ELEVATOR TO REMAIN
- A14 EXISTING ACCESSIBLE TELEPHONE TO REMAIN
- A21 EXISTING ACCESSIBLE PUBLIC TOILET ROOM UNISEX TO REMAIN

SHEET ACCESSIBILITY NOTES

- ACCESSIBLE TOILET FACILITIES LOCATED ON 8th FLOOR, LESS THAN 200 LINEAR FEET FROM AREA OF WORK. ACCESSIBLE PUBLIC UNISEX TOILET ALSO ON THIS FLOOR.

UCD MC
UC DAVIS MEDICAL CENTER

UCDAVIS HEALTH SYSTEM
FACILITIES DESIGN & CONSTRUCTION
4800 2ND AVENUE, SUITE 3010
SACRAMENTO, CALIFORNIA 95817
(916)734-7024

LIONAKIS

1919 Nineteenth Street
Sacramento CA 95811
P 916.558.1900 F 916.558.1919
www.lionakis.com

CONSULTANT

ARCHITECT

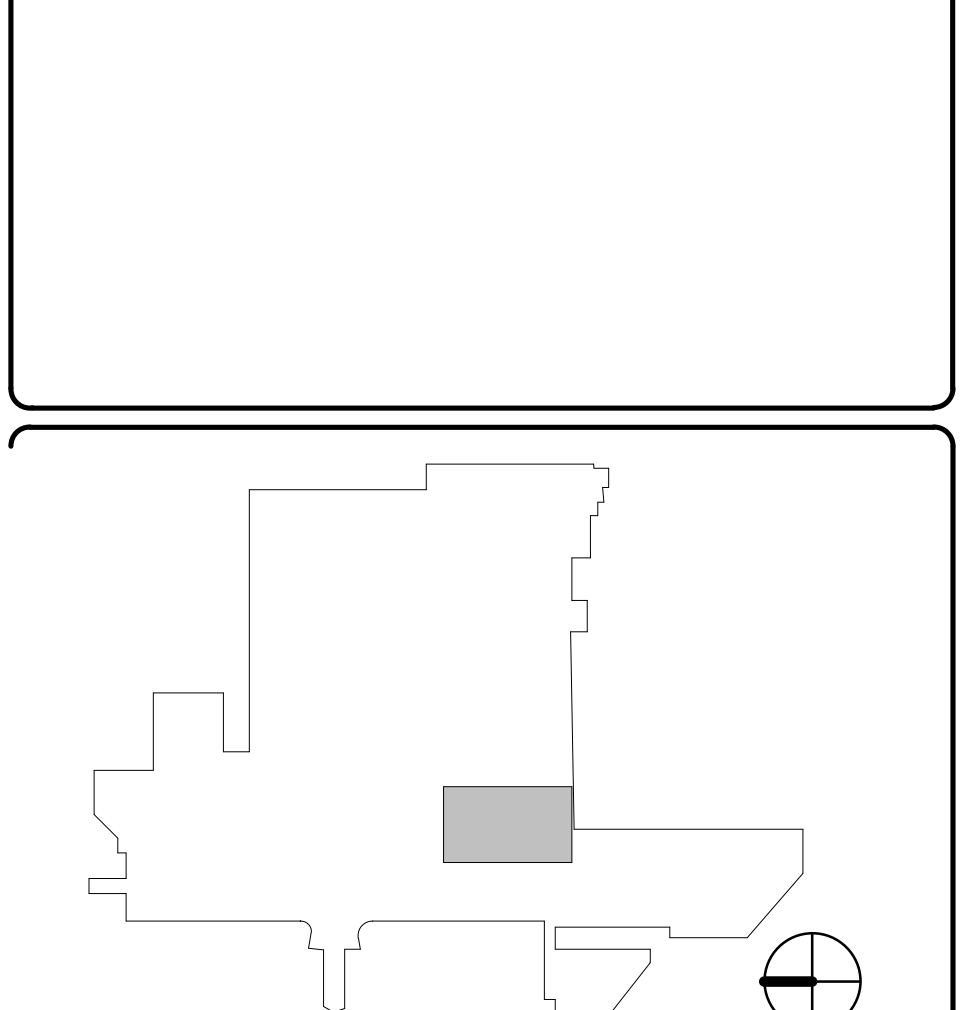
ENGINEER

OSHPD No: I140010-34-03

I140010-34-00-ACD0203

Department of Health Care Access & Information
Office of Statewide Hospital Planning & Development

REV	DESCRIPTION	DATE
127	CO-069	06/29/22
257	CO-107	08/10/23



2315 STOCKTON BLVD.,
SACRAMENTO, CA 95817

ACCOUNT NO:
9559040

OSHPD NO:
I140010-34-03

BUILDING:
MAIN HOSPITAL

WING/FLOOR:
EAST WING

PROJECT TITLE:
HOSPITAL SEISMIC UPGRADE - INCREMENT 3 NORTH/SOUTH WING DEMO MAKE READY

SHEET TITLE:
FLOOR PLAN - SEVENTH FLOOR

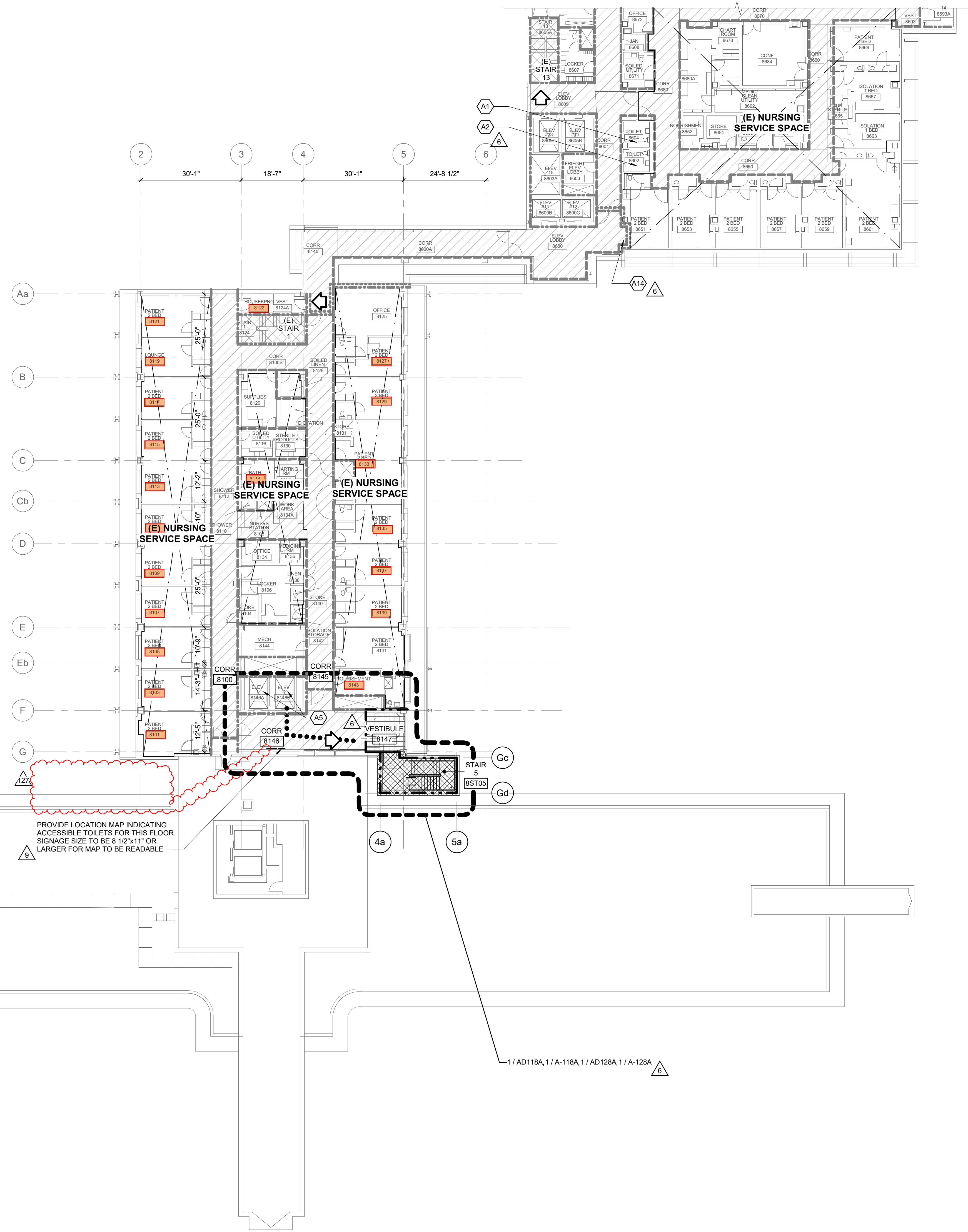
ARCH/ENGR. OF REC DON MARIANO	JOB NO. 013200.04	SHEET NO. A-107
PROJECT MANAGER DON MARIANO	SCALE As indicated	REVISION 03/12/18
DESIGNED BY STEVEN SUGIOKA	DATE 12/17/14	SHEET OF
DRAWN BY JH, WN, RD	PRE DRWG NO.	
UCDMC DRAWING NO. 9559040		

IF THIS SHEET IS NOT 30"x42", IT IS A REDUCED PRINT - SCALE ACCORDINGLY.

C

C:\Users\deeva.maharhour\Documents\Revit\Local\Revit\13200-04_BIM_MASTER_R20_CENTRAL_Deava.Maharhour.rvt

7/7/2022 4:50:28 PM

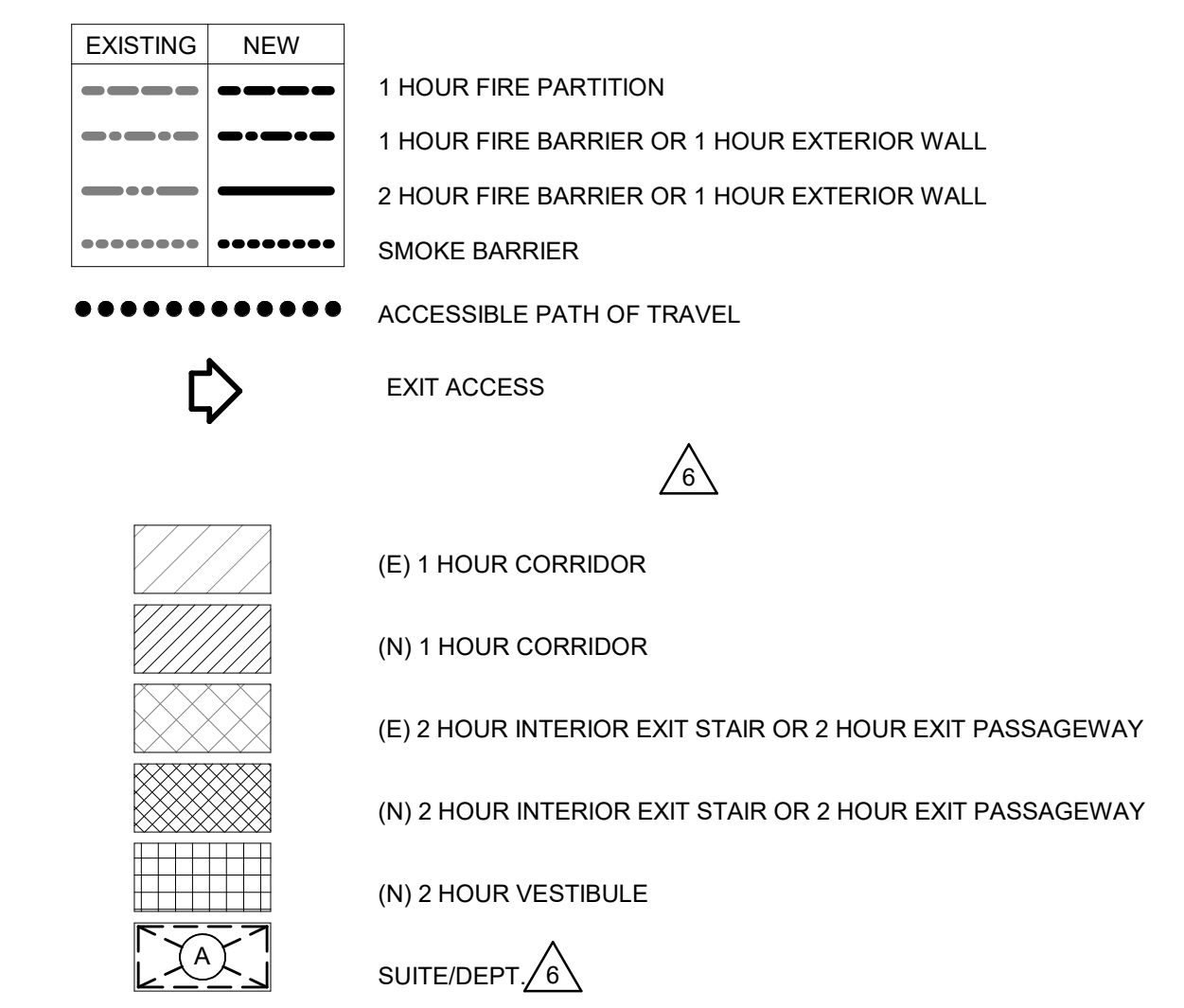


PROVIDE LOCATION MAP INDICATING ACCESSIBLE TOILETS FOR THIS FLOOR. SIGNAGE SIZE TO BE 8 1/2"x11" OR LARGER FOR MAP TO BE READABLE.

1 / AD118A, 1 / A-118A, 1 / AD128A, 1 / A-128A

1 FLOOR PLAN - EIGHTH FLOOR
1/16" = 1'-0"

LEGEND



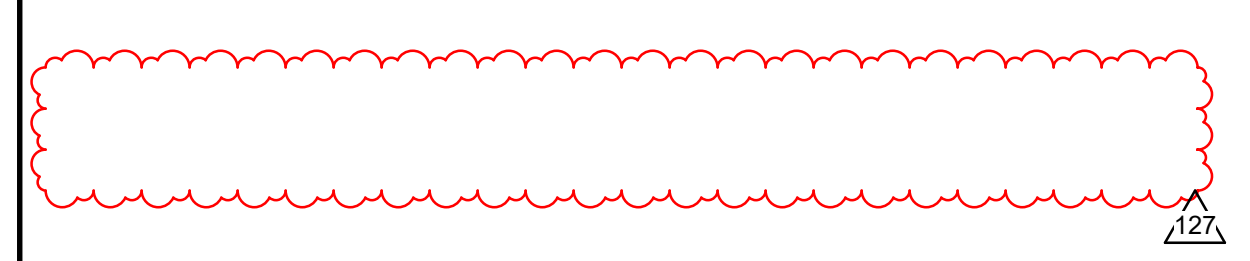
GENERAL SHEET NOTES

- AREAS OF WORK ARE GENERAL IN NATURE. REFERENCE ALL DRAWINGS FOR SPECIFIC AREAS OF WORK.
- SEE SHEET A-61 FOR TYPICAL SIGNAGE REQUIREMENTS.
- ALL DIMENSIONS ARE TO FACE OF STUDS, FACE OF CMU WALLS OR CENTERLINE OF COLUMN GRIDS UNLESS OTHERWISE NOTED.
- FOR SYMBOLS LEGEND SEE SHEET G-001.
- CONTRACTOR SHALL MAINTAIN SECURITY PERIMETER ENVELOPES AND CONTROLLED ACCESS POINTS WHICH SHALL BE IDENTIFIED AND COORDINATED WITH THE UNIVERSITY THROUGHOUT THE PROJECT.
- GRIDS ARE BASED ON EXISTING CONSTRUCTION DOCUMENTS PROVIDED BY OTHERS. CONTRACTOR SHALL BE RESPONSIBLE TO FIELD VERIFY ALL EXISTING CONDITIONS PRIOR TO CONSTRUCTION. THIS IS TYPICAL OF ALL GRIDS ILLUSTRATED THROUGHOUT EXISTING CONSTRUCTION.
- PATCH & REPAIR FINISHES TO MATCH EXISTING AS REQUIRED, U.N.O.
- STAIR 3 WILL NOT BE CLOSED UNTIL STAIR 5 HAS BEEN GIVEN OCCUPANCY. STAIR 3 CLOSURE TO BE APPROVED BY UCD FIRE PRIOR TO CLOSURE.
- VACATED (SHELL) SPACES WILL BE MAINTAINED IN A SAFE CONDITION: SPACES SHALL BE FULLY SPRINKLERED. DOORS INTO THE SPACE SHALL BE LOCKED TO PREVENT UNAUTHORIZED ACCESS. THERE SHALL BE A BI-MONTHLY SECURITY PATROL. SIGNS SHALL BE POSTED STATING "NO OCCUPANCY OR STORAGE".
- FOR ADDITIONAL INFORMATION, SEE ENLARGED PLANS ON A-400 SERIES SHEETS.

SHEET KEYNOTES

- A1 EXISTING ACCESSIBLE PUBLIC TOILET ROOM MALE
- A2 EXISTING ACCESSIBLE PUBLIC TOILET ROOM FEMALE
- A5 EXISTING ACCESSIBLE ELEVATOR TO REMAIN
- A14 EXISTING ACCESSIBLE TELEPHONE TO REMAIN

SHEET ACCESSIBILITY NOTES



UCD MC
UC DAVIS MEDICAL CENTER

UC DAVIS HEALTH SYSTEM
FACILITIES DESIGN & CONSTRUCTION
4800 2ND AVENUE, SUITE 3010
SACRAMENTO, CALIFORNIA 95817
(916)734-7024

LIONAKIS

1919 Nineteenth Street
Sacramento CA 95811
P 916.558.1900 F 916.558.1919
www.lionakis.com

CONSULTANT

ARCHITECT

ENGINEER

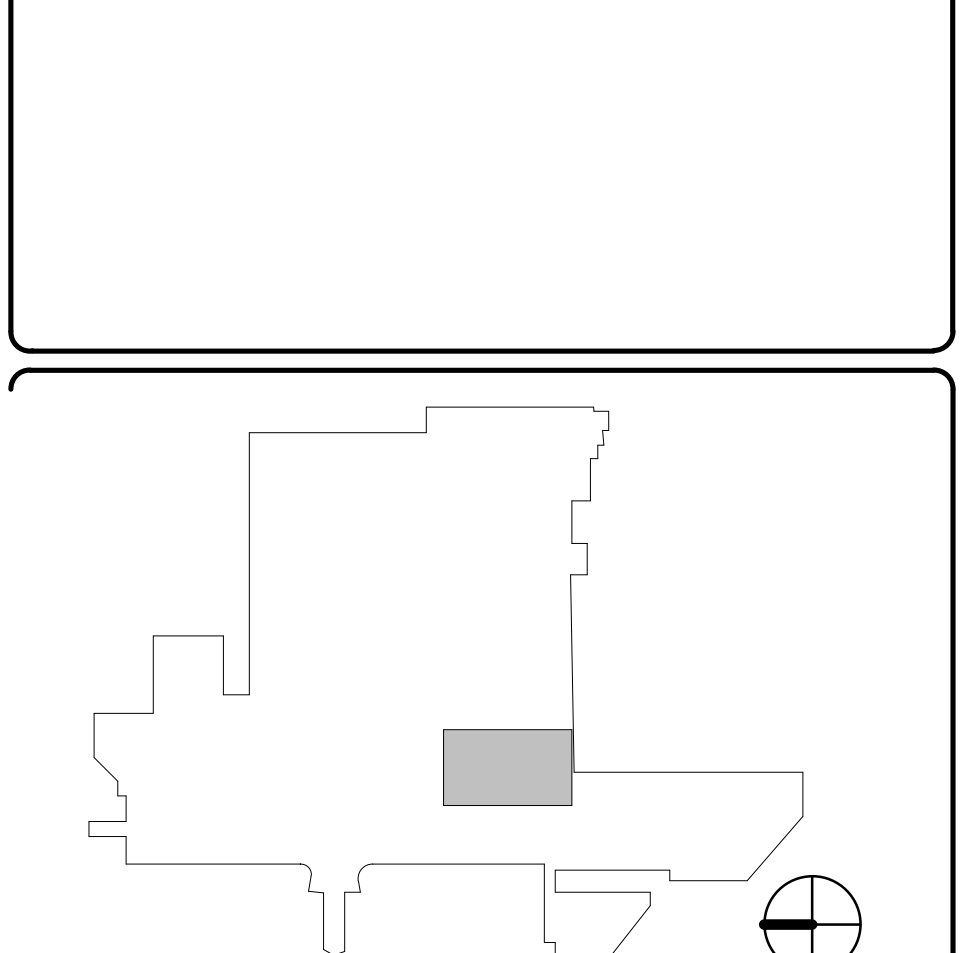
OSHPD No: I140010-34-03
I140010-34-00-ACD0164

REVIEWED IN ACCORDANCE WITH THE REQUIREMENTS OF T24, CCR

APPROVED

Department of Health Care Access and Information
FACILITIES DEVELOPMENT DIVISION
10/13/2022, 1:07:50 PM
I140010-34-00-ACD0164
Donald Harris

REV	DESCRIPTION	DATE
6	BACKCHECK 4	1/9/17
8	CHANGE ORDER 2	11/20/17
9	CHANGE ORDER 3	3/12/18
56	CO-031	08/31/21
127	CO-069	06/29/22



ACCOUNT NO:
9559040

OSHPD NO:
I140010-34-03

BUILDING:
MAIN HOSPITAL

WING/FLOOR:
EAST WING

PROJECT TITLE:
HOSPITAL SEISMIC UPGRADE - INCREMENT 3 NORTH/SOUTH WING DEMO MAKE READY

SHEET TITLE:
FLOOR PLAN - EIGHTH FLOOR

ARCH/ENGR. OF REC	JOB NO.	SHEET NO.
DON MARIANO	013200.04	A-108
PROJECT MANAGER DON MARIANO	SCALE As indicated	
DESIGNED BY STEVEN SUGIOKA	DATE 12/17/14	REVISION
DRAWN BY JH, WN, RD	PRE DRWING NO.	03/12/18
UCDMC DRAWING NO. 9559040		SHEET OF