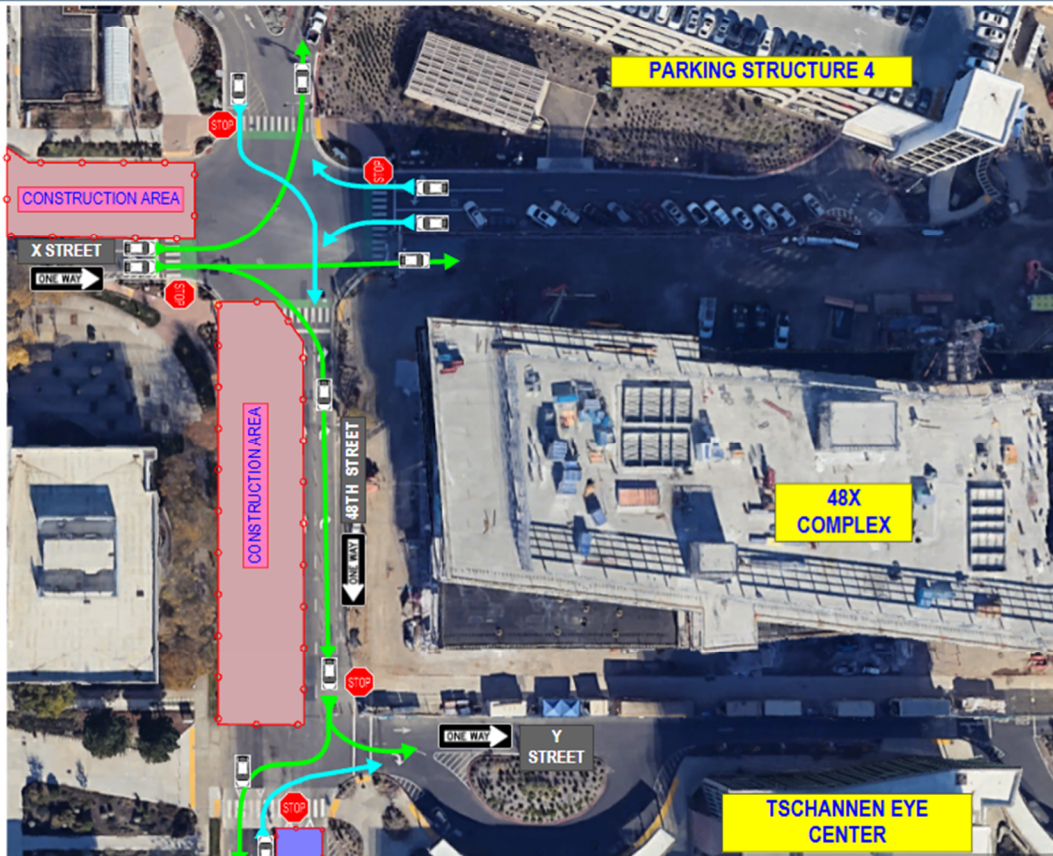


CUPx- CA Tower Infrastructure Traffic Impacts - Phase 2 + 4

X St & 48th St Intersection - Day Work



Phase 2- December 2026 to March 2026 (4 Months)
One-Way Traffic on X St. and 48th St.

Westbound lanes on X St. and Southbound lanes on 48th Street under construction.

Phase 4- Late January 2026 to March 2026 (2 Months)
Two-Way Traffic on 48th St. at southbound lanes

Northbound lanes on 48th St, south of Y St closed and two-way traffic occurs in southbound lanes.

Southbound one-way traffic remains on 48th St, between X and Y St.

