

# Chapter 12: Temporary Construction

## Table of Contents

---

12.01		Required Additional Sign Types Across Chapters
12.02		Site and Exterior Family Overview
12.03		Interior Family Overview
12.04	TID.01	Freestanding Trailer Identification
12.05	TID.02	Trailer Identification
12.06	TID.03	Address Identification
12.07	TID.04	Vinyl Address Identification
12.08	TWF.01	Vehicular Freestanding Directional
12.09	TWF.02	Pedestrian Freestanding Directional
12.10	TWF.03	Vehicular Detour Directional
12.11	TWF.04	Pedestrian Detour Directional
12.12	TIN.01	Construction Notice
12.13	TIN.02	Construction Notice Information
12.14	TIN.03	ICRA Containment
12.15	TIN.04	Construction Notice, “Excuse Our Dust...”

## Required Additional Sign Types Across Chapters

---

ID.10	Building Entry ID (Chapter 2)
DIR.21	Directional, Medium Layouts (Chapter 3)
CD.01.1	Entry Notice Vinyl (only ADA vinyl symbol) (Chapter 4)
CD.03	Prop 65 (Chapter 4)
CD.04	Service Animals Notice (Chapter 4)
CD.05	No Smoking (Chapter 4)
CD.06	No Weapons (Chapter 4)

### Note:

Additional sign types may be necessary based on the specific conditions of the project. The Sign Consultant to coordinate with the architect and review local building codes to ensure compliance and appropriateness. All signage intended for outdoor installation must be fabricated using exterior-grade materials designed to withstand weather conditions, UV exposure, and environmental wear.

# Temporary Site and Exterior Construction

## Site and Exterior Family Overview



TID.01  
Freestanding Trailer Identification



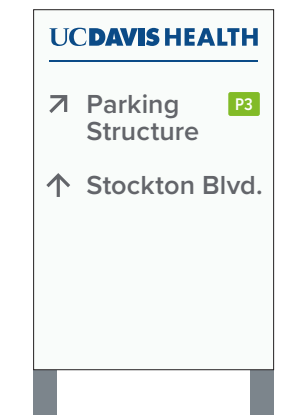
TID.02  
Trailer Identification



TID.03  
Address Identification



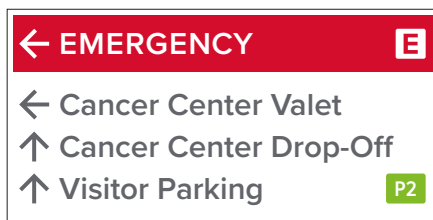
TID.04  
Vinyl Address Identification



TWF.01  
Vehicular Freestanding  
Directional



TWF.02  
Pedestrian Freestanding  
Directional



TWF.03  
Vehicular Detour  
Directional



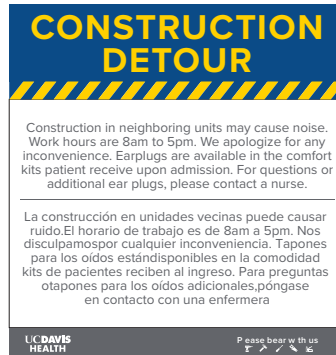
TWF.04  
Pedestrian Detour  
Directional

# Temporary Interior Construction

## Interior Family Overview



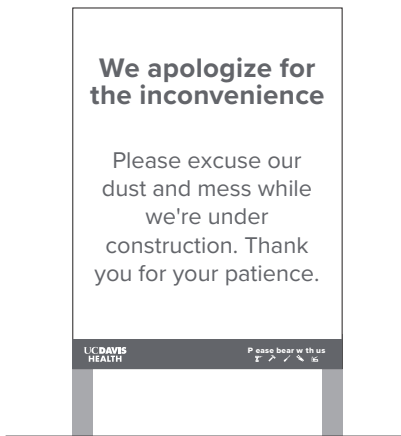
TIN.01  
Construction Notice



TIN.02  
Construction Notice Information



TIN.03  
Construction Notice,  
ICRA Containment



TIN.04  
Construction Notice, "Excuse Our Dust..."

# Temporary Site Identification

## TID.01

## Freestanding Trailer Identification

### Usage

- This sign type identifies jobsite construction trailer(s) by its name and address.

### Placement

- Place at primary frontage or primary entry drive.
- Detail location plan and setback to be determined on a case-by-case basis.

### Components

- (A) Panel: 1/8" thick aluminum
  - Finish: painted all visible surfaces
  - Attachment: fix to aluminum posts with structural aluminum adhesive and/or mechanical fasteners as needed
- (B) Graphics: surface digital print or applied vinyl
  - Typeface: Proxima Nova Semibold and Bold
- (C) Aluminum Post: 4" square, closed and finished top
  - Finish: painted all visible surfaces
- (D) Provide footings and engineering

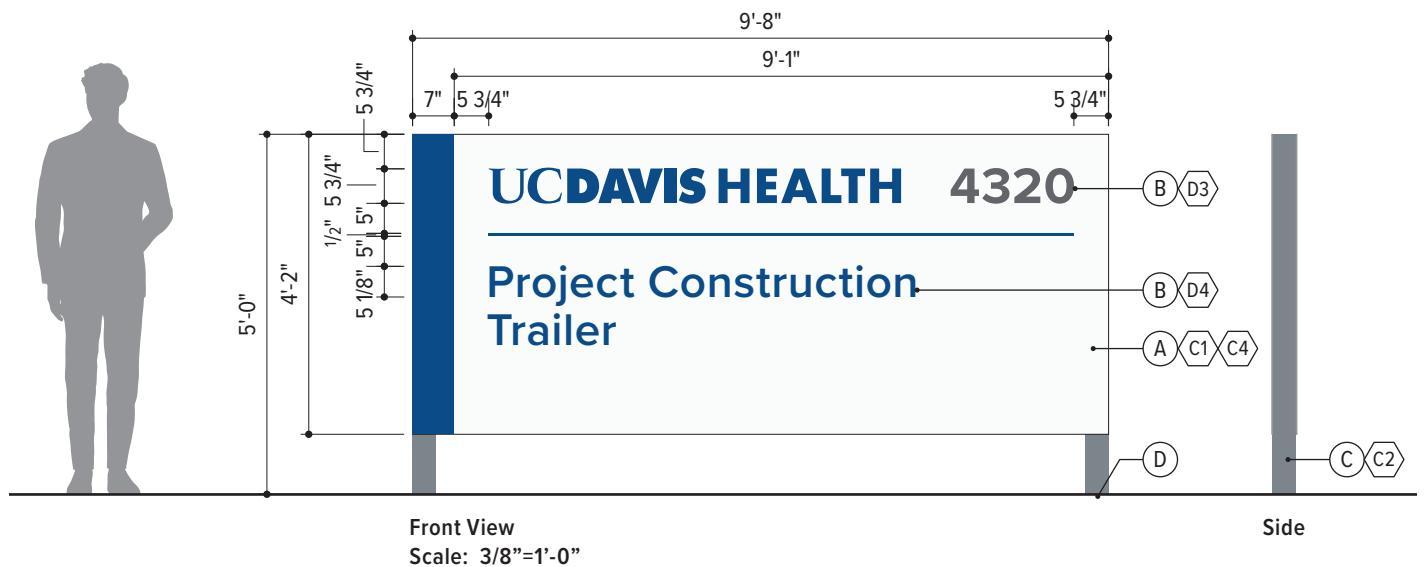
### Colors & Materials

References as noted below. See Chapter 1: Universal Standards for specifications.

- (C1) White Wonder
- (C2) Shaker Gray
- (C4) UC Davis Blue
- (D3) PMS Cool Gray 10C
- (D4) UC Davis Blue

### Installation

- See Appendix A, Drawing FD.144 approved standard fabrication and installation detail.



# Temporary Exterior Identification

## TID.02

## Trailer Identification

### Usage

- This sign type identifies the department of a jobsite construction trailer.

### Placement

- See typical Installation Context on this page.
- Place on exterior wall of temporary trailer.

### Components

- (A) Panel: 1/4" thick white PVC
- (B) Graphics: surface digital print or applied vinyl
  - Typeface: Proxima Nova Medium

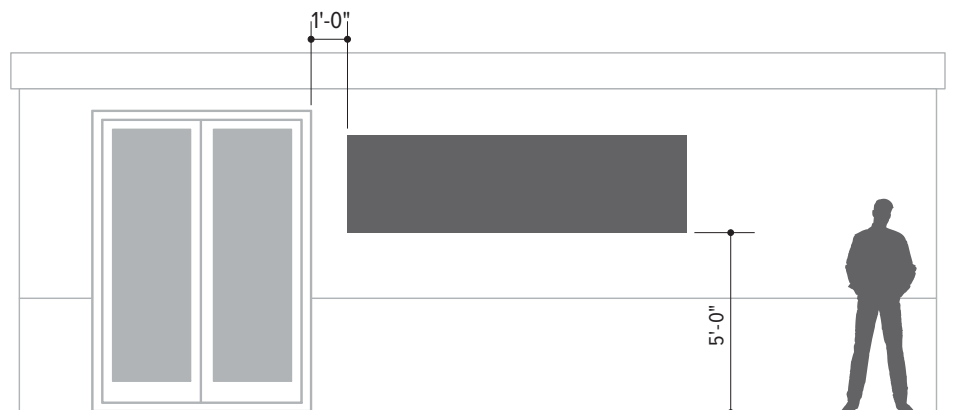
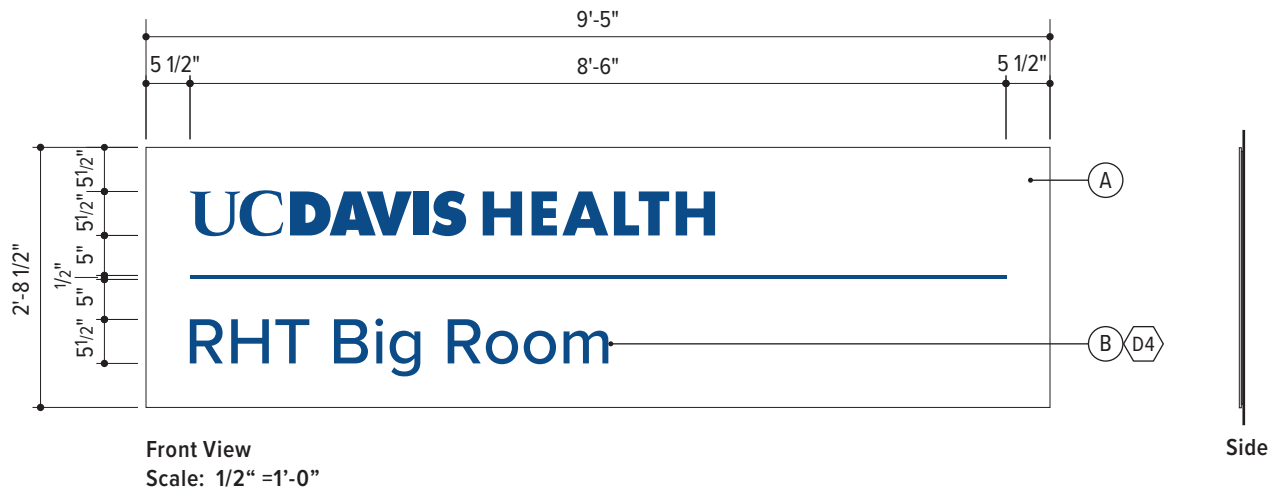
### Colors & Materials

References as noted below. See Chapter 1: Universal Standards for specifications.

(D4) UC Davis Blue

### Installation

- See Appendix A, Drawing FD.10 approved standard fabrication and installation detail.



Installation Context  
Scale: 3/16" = 1'-0"

# Temporary Exterior Identification

## TID.03

## Address Identification

### Usage

- This sign type identifies the address of jobsite construction trailer(s).

### Placement

- See typical Installation Context on this page.
- Place on exterior wall of temporary trailer in a location visible from a vehicular approach.

### Components

- (A) Panel: 1/4" thick white PVC
- (B) Graphics: surface digital print or applied vinyl
  - Typeface: Proxima Nova Semibold

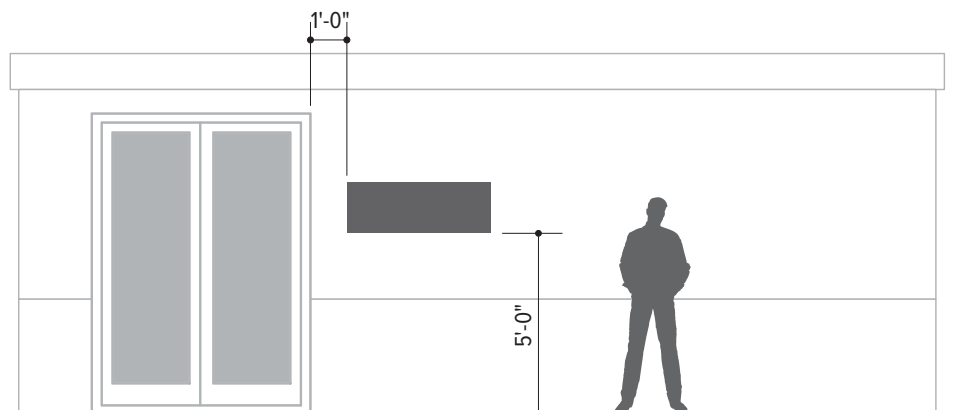
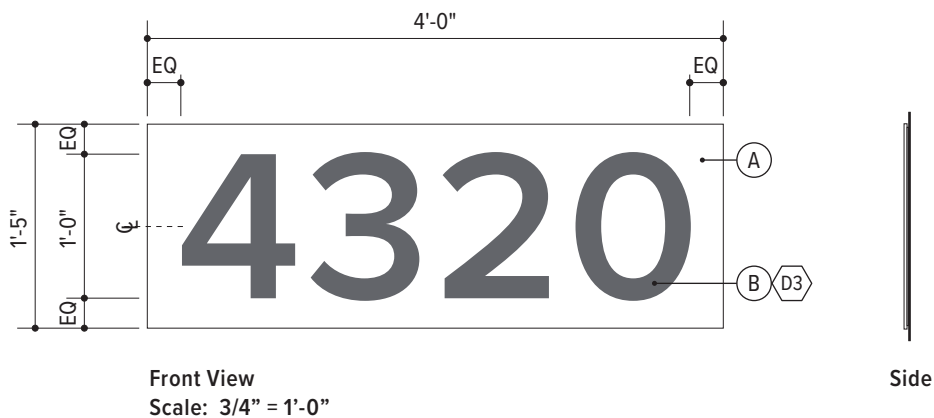
### Colors & Materials

References as noted below. See Chapter 1: Universal Standards for specifications.

 PMS Cool Gray 10C

### Installation

- See drawing FD.10 in Appendix A for additional fabrication and/or typical installation details.



Installation Context  
Scale: 3/16" = 1'-0"

# Temporary Exterior Wayfinding

## TID.04

## Vinyl Address Identification

### Usage

- This sign is used at public entry door of temporary facilities.

### Placement

- See typical installation context on this page.
- Place on exterior arrival door.

### Components

- Ⓐ Graphics: high performance cut vinyl
  - Typeface: Proxima Nova Semibold

### Colors & Materials

References as noted below. See Chapter 1: Universal Standards for specifications.

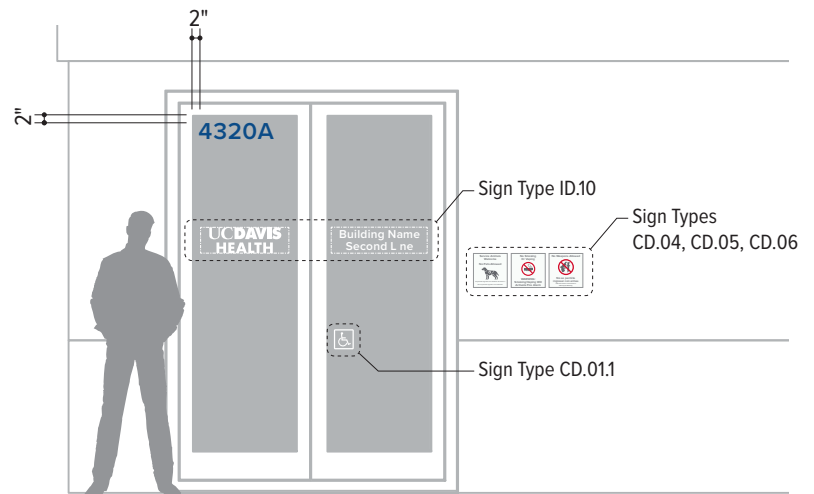
V9 Vivid Blue

### Installation

- See drawing FD.01 in Appendix A for additional fabrication and/or typical installation details.



Front View  
Scale: 3" = 1'-0"



Installation Context  
Scale: 1/4" = 1'-0"

# Temporary Exterior Wayfinding

## TWF.01

## Vehicular Freestanding Directional

### Usage

- This temporary sign type is used at vehicular decision points.
- Messages point to major patient destinations and the nearest public parking.
- Avoid messages directed towards staff or service vehicles, such as the Loading Dock.

### Placement

- Vehicular decision points along the path of travel typically at intersections.
- Detail location plan and setback to be determined on a case-by-case basis.

### Components

- Ⓐ Panel: 1/8" thick aluminum
  - Finish: painted all visible surfaces
  - Attachment: fix to aluminum posts with structural aluminum adhesive and/or mechanical fasteners as needed

- Ⓑ Graphics: surface digital print or applied vinyl
  - Typeface: Proxima Nova Semibold
- Ⓒ Aluminum Post: 4" square, closed and finished top
  - Finish: painted all visible surfaces
- Ⓓ Provide footings and engineering

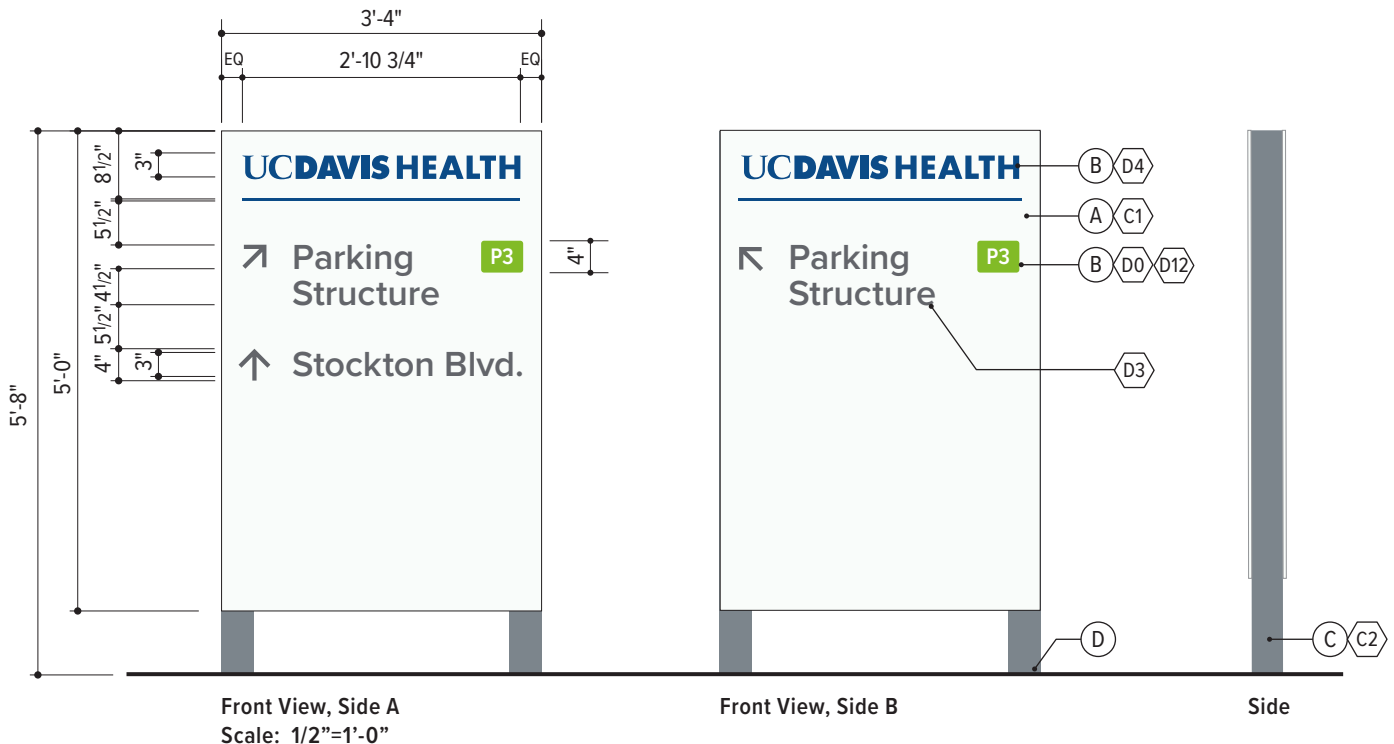
### Colors & Materials

References as noted below. See Chapter 1: Universal Standards for specifications.

- |                      |                  |                          |
|----------------------|------------------|--------------------------|
| Ⓒ1 White Wonder      | Ⓒ2 Shaker Gray   | Ⓓ0 Printed White         |
| Ⓓ3 PMS Cool Gray 10C | Ⓓ4 UC Davis Blue | Ⓓ12 Transportation Green |

### Installation

- See Appendix A, Drawing FD.144 approved standard fabrication and installation detail.



# Temporary Exterior Wayfinding

## TWF.02

## Pedestrian Freestanding Directional

### Usage

- This temporary sign type is used at pedestrian decision points.
- Messages point to major patient destinations and the nearest public parking.
- Avoid messages directed towards staff or service vehicles, such as the Loading Dock.

### Placement

- Pedestrian decision points along the path of travel typically at intersections.
- Detail location plan and setback to be determined on a case-by-case basis.

### Components

- (A) Panel: 1/8" thick aluminum
  - Finish: painted all visible surfaces

- Attachment: fix to aluminum posts with structural aluminum adhesive and/or mechanical fasteners as needed

- (B) Graphics: surface digital print or applied vinyl
  - Typeface: Proxima Nova Medium
- (C) Aluminum Post: 4" square, closed and finished top
  - Finish: painted all visible surfaces
- (D) Provide footings and engineering

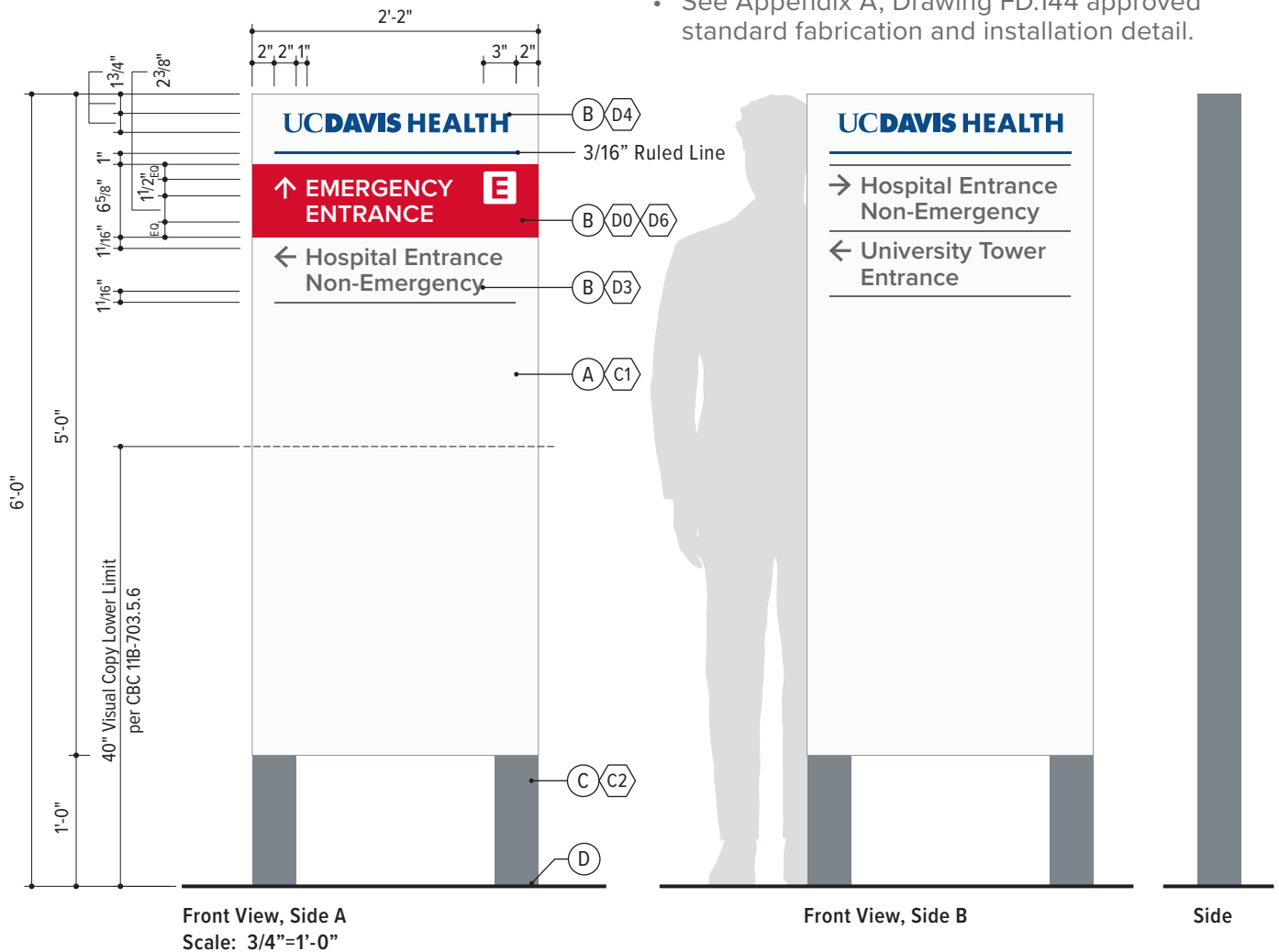
### Colors & Materials

References as noted below. See Chapter 1: Universal Standards for specifications.

- |                        |                    |                    |
|------------------------|--------------------|--------------------|
| (C1) White Wonder      | (C2) Shaker Gray   | (D0) Printed White |
| (D3) PMS Cool Gray 10C | (D4) UC Davis Blue | (D6) Emergency Red |
| (D8) Hospital Blue     |                    |                    |

### Installation

- See Appendix A, Drawing FD.144 approved standard fabrication and installation detail.



# Temporary Exterior Wayfinding

## TWF.03

## Vehicular Detour Directional

### Usage

- This temporary sign type is used at vehicular decision points during construction.
- Messages point to major patient destinations and the nearest public parking.
- Avoid messages directed towards staff or service vehicles, such as the Loading Dock.

### Placement

- See typical Installation Context on this page.
- Vehicular decision points along the path of travel typically at intersections.

### Components

- Ⓐ Vinyl white banner with digital print graphics
  - Typeface: Proxima Nova Semibold

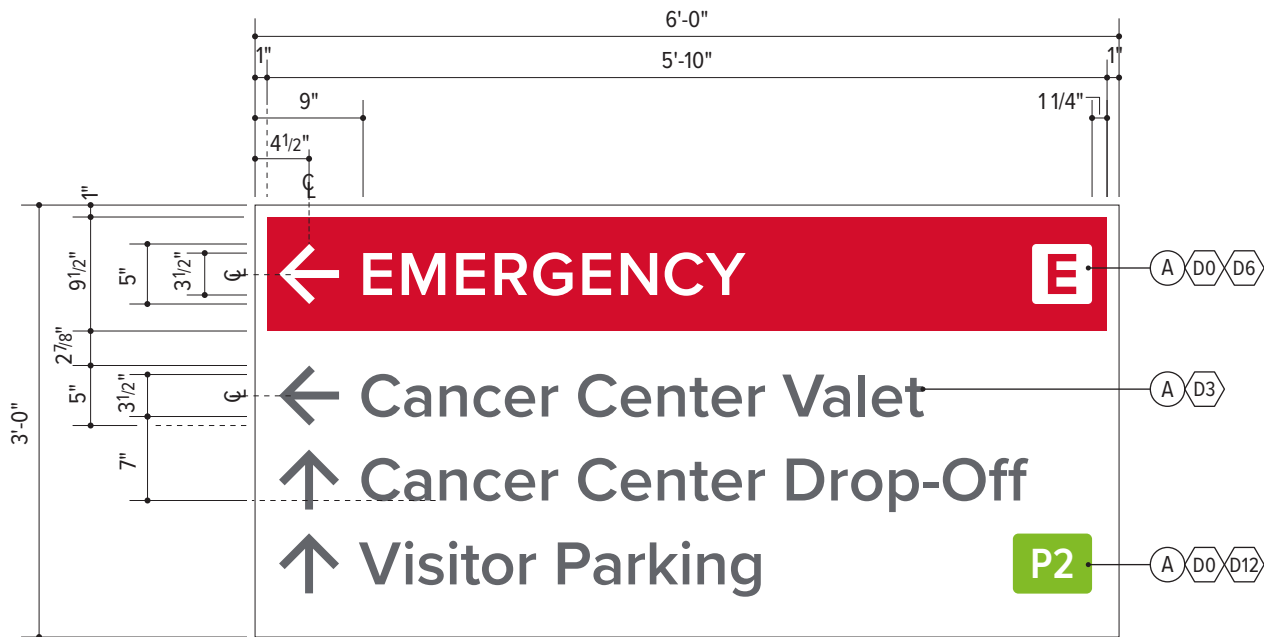
### Colors & Materials

References as noted below. See Chapter 1: Universal Standards for specifications.

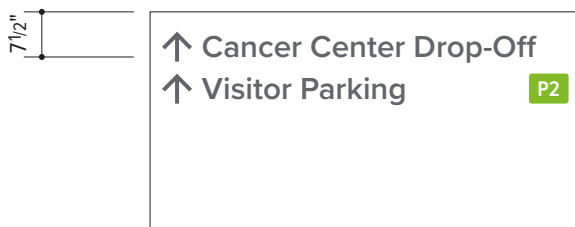
- Ⓓ⓪ Printed White
- Ⓓⓓ PMS Cool Gray 10C
- ⒹⓅ Emergency Red
- Ⓓ12 Transportation Green

### Installation

- Mounted to construction fence with grommets and appropriate materials as needed.



Front View  
Scale: 3/4" = 1'-0"



Alternate Layout  
Scale: 3/8" = 1'-0"



Installation Context  
Scale: 3/16" = 1'-0"

# Temporary Exterior Wayfinding

## TWF.04

## Pedestrian Detour Directional

### Usage

- This temporary sign type is used at pedestrian decision points during construction.
- Messages point to major patient destinations and the nearest public parking.
- Avoid messages directed towards staff or service vehicles, such as Loading Dock.

### Placement

- Pedestrian decision points along the path of travel typically at intersections.
- Adjust layout to accommodate to any temporary holder. The consultant is responsible for coordinating.

### Components

- Ⓐ Outdoor weatherproof and wind resistant double-sided sidewalk sign holder
- Ⓑ Panel: white PVC
  - Graphics: surface digital print or applied vinyl
  - Typeface: Proxima Nova Medium, Semibold and Bold

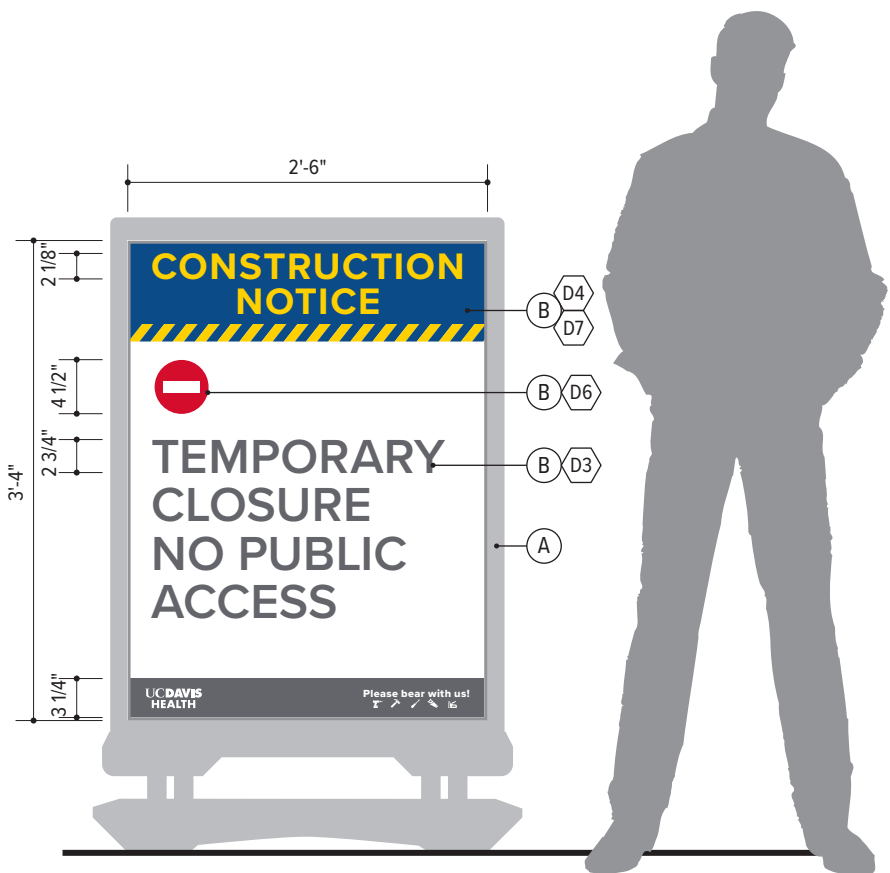
### Colors & Materials

References as noted below. See Chapter 1: Universal Standards for specifications.

- Ⓓ3 PMS Cool Gray 10C
- Ⓓ4 UC Davis Blue
- Ⓓ6 Emergency Red
- Ⓓ7 Regulatory Yellow



Alternate Example Layout



Front View  
Scale: 3/4" = 1'-0"

# Temporary Interior Informational

## TIN.01

## Construction Notice

### Usage

- This temporary sign type identifies construction areas within a building.

### Placement

- See typical Installation Context on this page.
- Placed in a viable position adjacent to the entrance of the affected room or areas.

### Components

- (A) Panel:
  - Short Term Construction (a month): laminated paper
  - 6 months to a year: foam core
  - Over a year: 1/8" thick white PVC
- (B) Graphics: surface digital print or applied vinyl
  - Typeface: Proxima Nova Regular and Bold

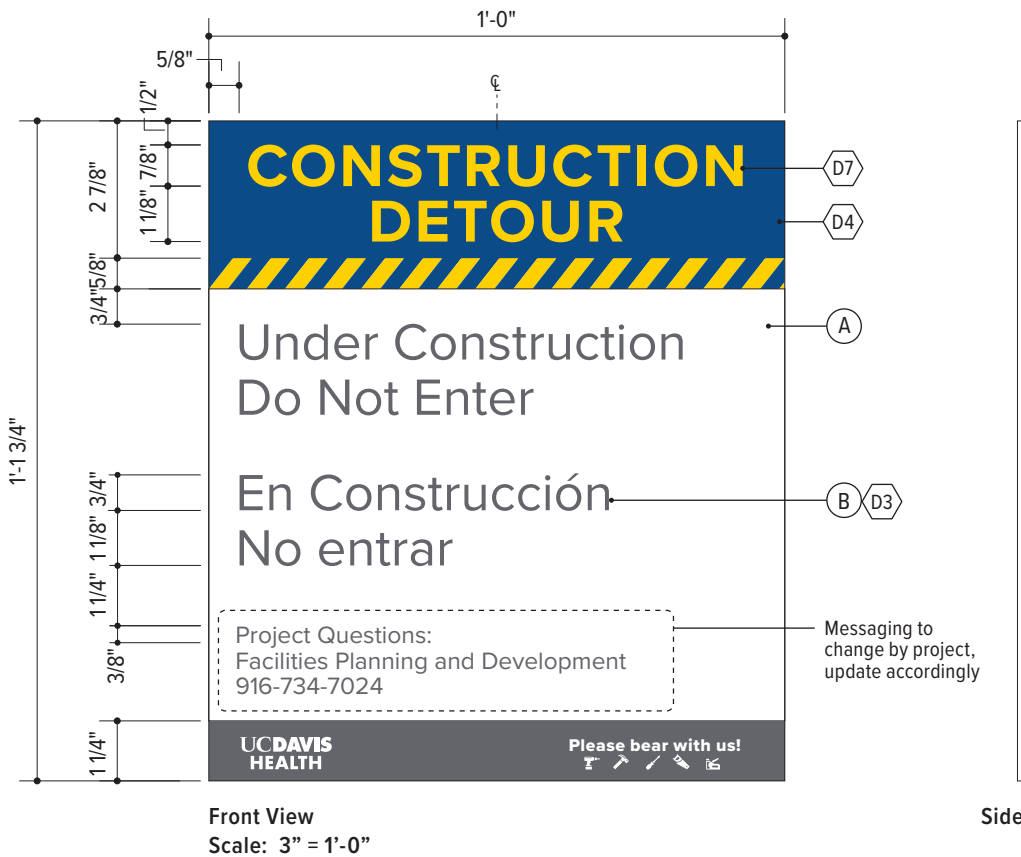
### Colors & Materials

References as noted below. See Chapter 1: Universal Standards for specifications.

- (D3) PMS Cool Gray 10C
- (D4) UC Davis Blue
- (D7) Regulatory Yellow

### Installation

- See Appendix A, Drawing FD.10 approved standard fabrication and installation detail.





# Temporary Interior Informational

## TIN.03

## ICRA Containment

### Usage

- Construction notice on construction containments as required by the project ICRA permit to notify of a project and main points of contact.

### Placement

- Main entrance of construction containment (main door), front and center (if other signs are placed around it).

### Components

- Ⓐ Digital print on white letter size paper, laminated
  - Typeface: Proxima Nova Bold and Regular

### Colors & Materials

References as noted below. See Chapter 1: Universal Standards for specifications.

- Ⓓ3 PMS Cool Gray 10C
- Ⓓ4 UC Davis Blue
- Ⓓ7 Regulatory Yellow

### Additional Signs Required

- Building or HCAI permit (single sheet, laminated)
- ICRA Permit with page 8 first (multiple sheets, sleeve)
- ICRA daily check off (multiple sheets, sleeve)
- ILSM Permit and Daily log (when applicable, sleeve)
- Fire alarm device list for blocked devices (when applicable, laminated)

### NOTE:

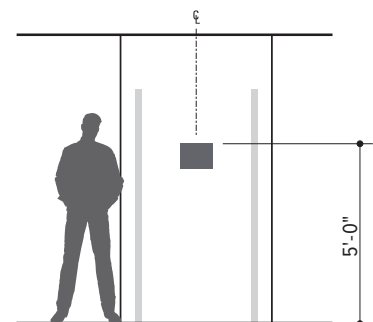
- Refer to the ICRA policy 2004 in Ellucid and the Division 1 specifications 015610 for placement and other containment requirements.
- Fillable templates can be found in the Division 1 specification.

### Installation

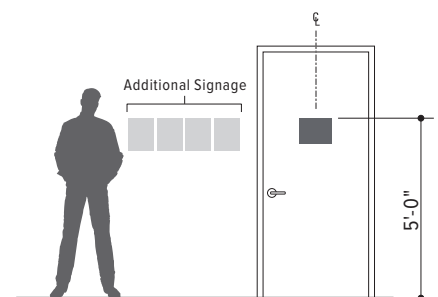
- Single sheets can be laminated, multiple sheets in a construction sleeve provided by the contractor.



Front View  
Scale: 1:3



Installation Context -  
Construction Containment Entrance- Soft Barrier



Installation Context -  
Construction Containment Entrance- Hard Barrier  
Scale: 3/16" = 1'-0"

# Temporary Interior Informational

## TIN.04

## Construction Notice, "Excuse Our Dust..."

### Usage

- This temporary sign type is used during construction.

### Placement

- Placed at areas upon entering construction zones.
- Adjust layout to accommodate to any temporary holder. The consultant is responsible for coordinating.

### Components

- Ⓐ A-Frame sign holder
- Ⓑ Panel: white PVC
  - Graphics: surface digital print or applied vinyl
  - Typeface: Proxima Nova Bold and Regular

### Colors & Materials

References as noted below. See Chapter 1: Universal Standards for specifications.

Ⓓ0 Printed White

Ⓓ3 PMS Cool Gray 10C

