

Appendix A: Fabrication and Installation Details

Table of Contents

A.03	FD.01	Vinyl Graphics
A.04	FD.05	Dimensional Graphics, Flush Mounted without Studs
A.05	FD.06	Dimensional Letters or Graphics, Flush Mounted with Studs
A.06	FD.07	Fabricated Letters or Graphics, Flush Mounted
A.07	FD.10	Wall or Door Mounted Plaque
A.08	FD.15	Wall Mounted Tactile Plaque
A.09	FD.16	Wall Mounted In Use Slider
A.10	FD.19	Cyclone Fence Mounted
A.11	FD.20	Wall Mounted Plaque with Insert Holder
A.12	FD.21	Wall Mounted Tactile Plaque with Insert Holder
A.13	FD.25	Evacuation Map Insert Holder, Wall Mounted
A.14	FD.26	Insert Holder, Wall Mounted
A.15	FD.30	Restroom Symbol Identification
A.16	FD.35	Building Legacy ID
A.17	FD.41	Ceiling Mounted Bracket
A.18	FD.45	Interior Cable Suspended
A.19	FD.50	Flag Mounted Bracket
A.20	FD.55	Department Identification, Horizontal
A.21	FD.56	Department Identification, Vertical
A.22	FD.60	Gate Mounted
A.23	FD.70	Directory with Changeable Strips/Panel, Wall Mounted
A.24	FD.71	Large Directory with Changeable Strips/Panel, Wall Mounted
A.25	FD.72	Orientation Directory with Changeable Strips/Panel, Wall Mounted
A.26	FD.73	Orientation Directory with Integrated Digital
A.27	FD.75	Lobby Directional, Freestanding
A.28	FD.90	Mandated Posting, Wall Mounted
A.29	FD.100.1	Face Illuminated Channel Letters
A.30	FD.100.2	Halo Illuminated Channel Letters
A.31	FD.101	Non-Illuminated Channel Letters
A.32	FD.110	Monument
A.33	FD.120	Non-Illuminated Pylon
A.34	FD.125	Illuminated Pylon
A.35	FD.130	Vehicular Directional with Removable Slats
A.36	FD.135	Pedestrian Orientation
A.37	FD.136	Pedestrian Directional
A.38	FD.140	Single Post Mounted
A.39	FD.141	Single Post Flag Mounted
A.40	FD.142	Single Post, Ceiling Mounted
A.41	FD.143	Round Pole Mounted

Appendix A: Fabrication and Installation Details

Table of Contents

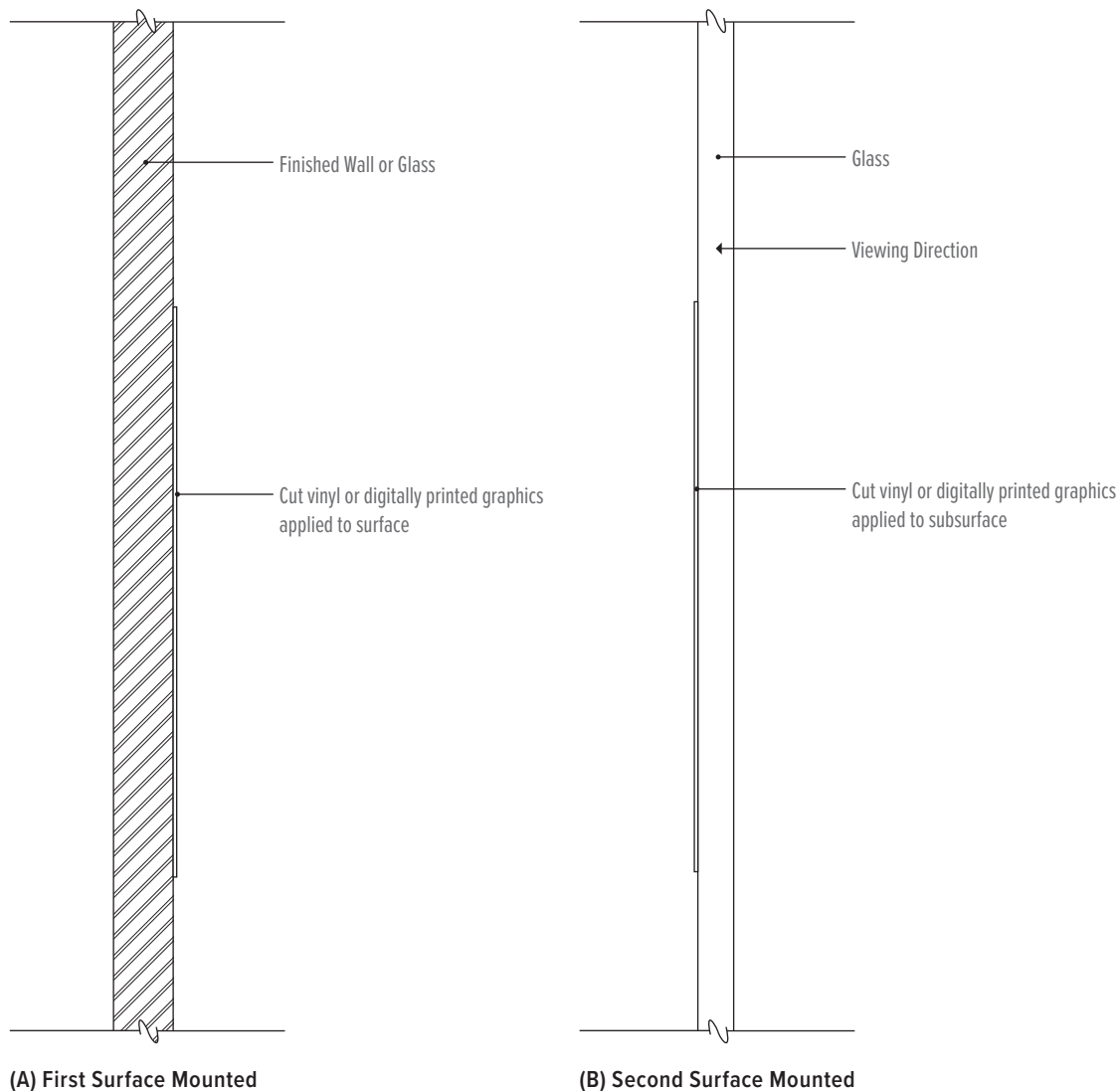
A.42	FD.144	Freestanding Temporary Sign
A.43	FD.145	Double Post Mounted
A.44	FD.150	Parking Monument, Static
A.45	FD.151	Parking Monument, Digital Freestanding
A.46	FD.152	Parking Monument, Digital Wall Mounted
A.47	FD.160	L Panel, Wall Mounted
A.48	FD.165	Parking Suspended

Fabrication and Installation Details

FD.01

Vinyl Graphics

- Sign Consultant to verify glass finish on a project specific basis to determine vinyl mounting surface (first or second surface) based on visibility
- Sign consultant expected to identify potential installation conflicts—such as wall protection or architectural conditions—during the design process. If signs cannot be installed per typical mounting standards due to such conflicts, the sign consultant must coordinate with the FP&D Signage Program Representative and the project team. An appropriate alternative installation solution is to be proposed for review and approval prior to implementation.



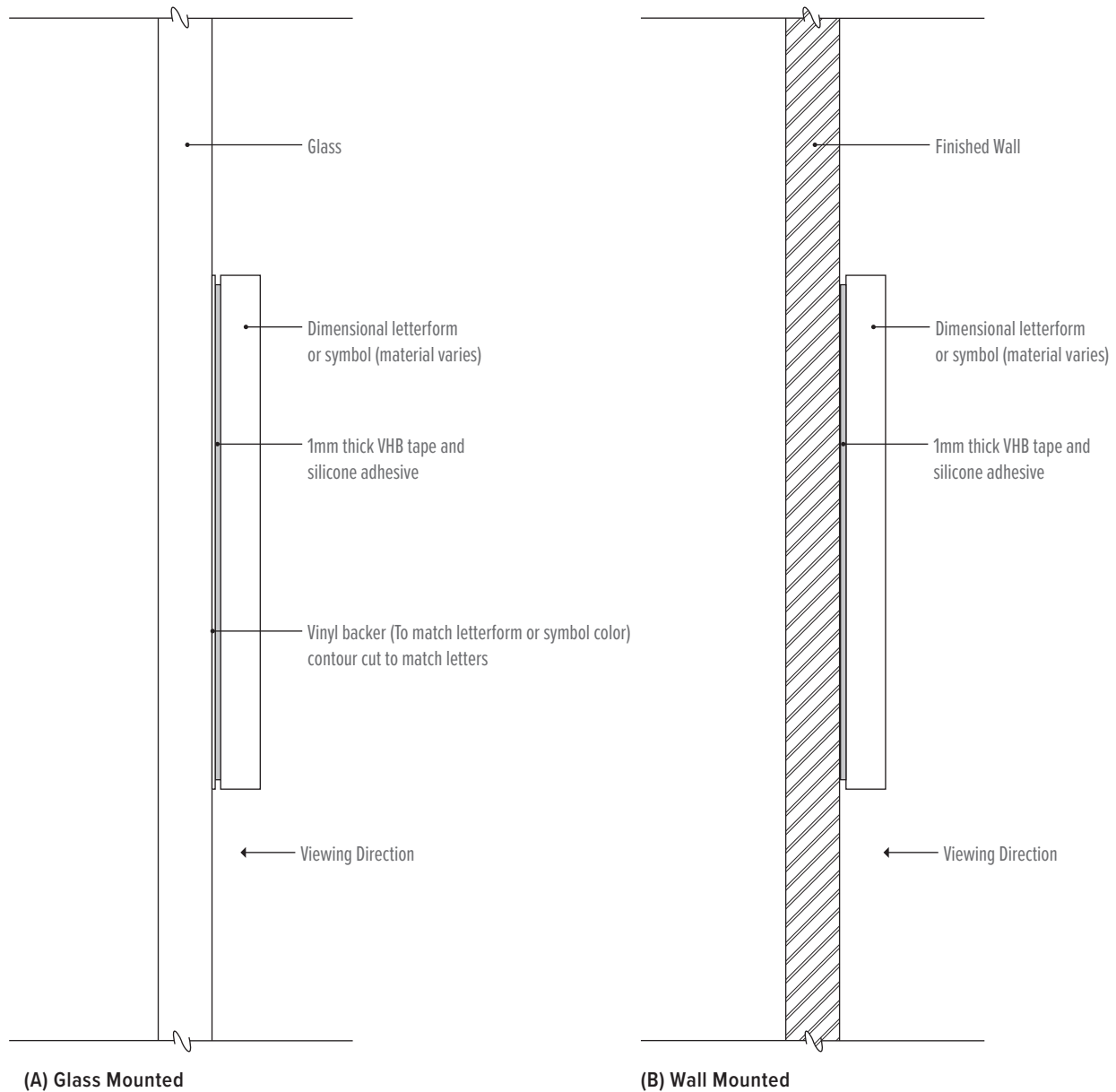
Note: Fabrication details shown are pre-approved by UC Davis Health. Any variance requests are to be provided as detail drawings to UC Davis Health for review and approval. The mounting methods shown on these pages have been developed for this sign program as a standard. Unique site conditions and local codes may require additional hardware or mounting fixtures not shown. In California Hospitals, HCAI requires that signs over 20 lbs. are attached to pre-installed bracing from the structure above for ceiling attached signs or wall backing for wall mounted signs. Sign Consultant should field verify sign locations and conditions or coordinate with the design team in order to evaluate the built conditions. If needed, Sign Consultant should coordinate with the project team architect or structural engineer for bracing or backing details in order to submit appropriate mounting methods for approval by HCAI and the AHJ prior to fabrication and installation.

Fabrication and Installation Details

FD.05

Dimensional Graphics, Flush Mounted without Studs

To be used on metal letters 2.99" or shorter and acrylic letters 5.99" or shorter



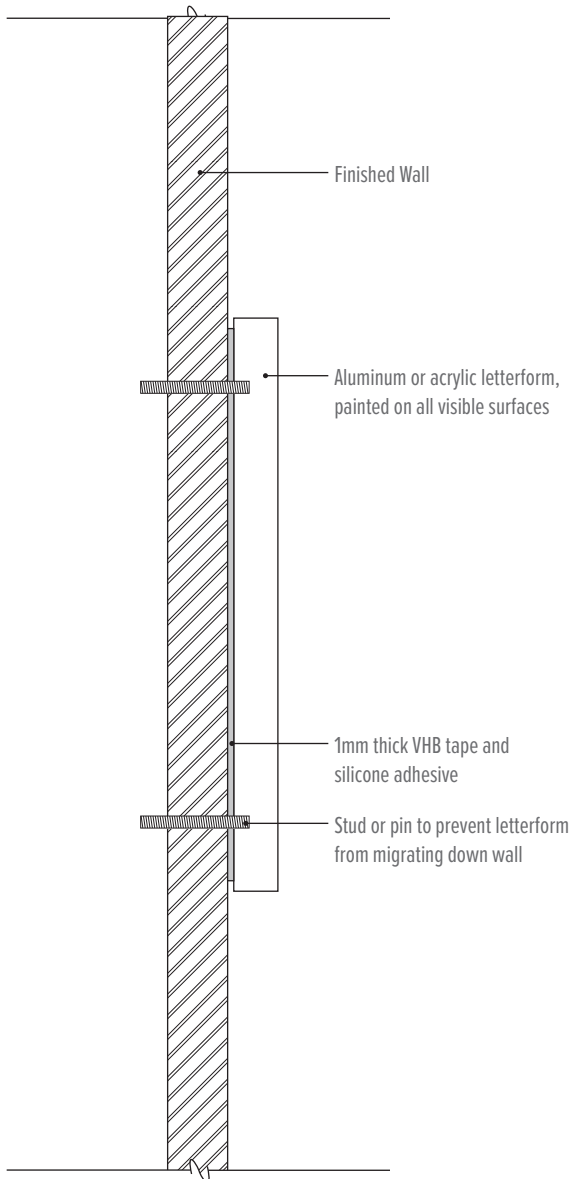
Note: Fabrication details shown are pre-approved by UC Davis Health. Any variance requests are to be provided as detail drawings to UC Davis Health for review and approval. The mounting methods shown on these pages have been developed for this sign program as a standard. Unique site conditions and local codes may require additional hardware or mounting fixtures not shown. In California Hospitals, HCAI requires that signs over 20 lbs. are attached to pre-installed bracing from the structure above for ceiling attached signs or wall backing for wall mounted signs. Sign Consultant should field verify sign locations and conditions or coordinate with the design team in order to evaluate the built conditions. If needed, Sign Consultant should coordinate with the project team architect or structural engineer for bracing or backing details in order to submit appropriate mounting methods for approval by HCAI and the AHJ prior to fabrication and installation.

Fabrication and Installation Details

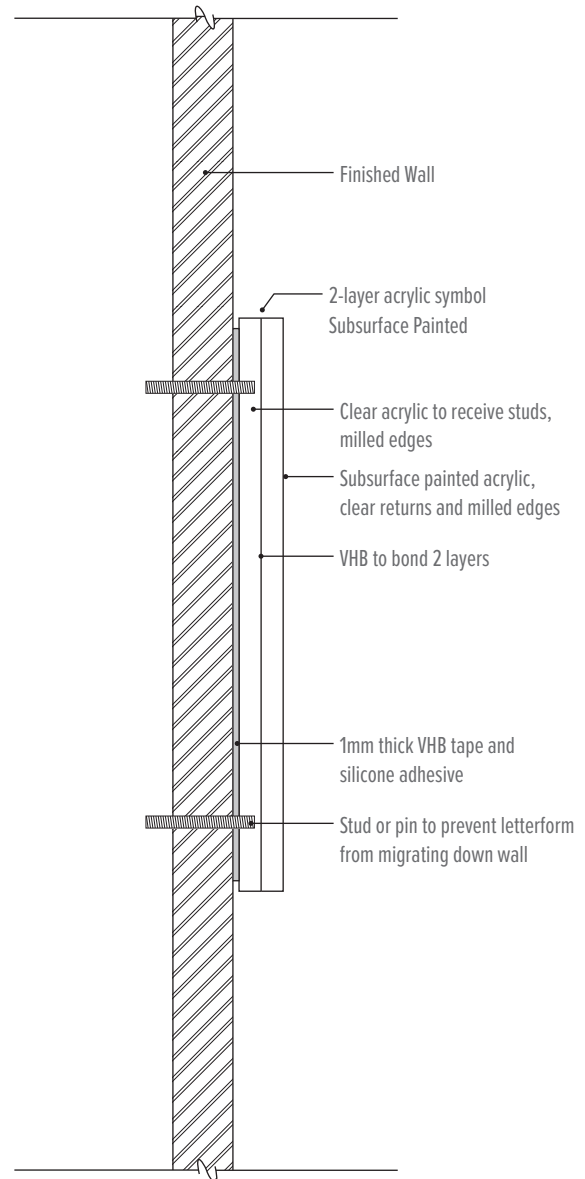
FD.06

Dimensional Letters or Graphics, Flush Mounted with Studs

To be used on metal letters 3" or taller and acrylic letters 6" or taller



(A) Painted On All Visible Surfaces



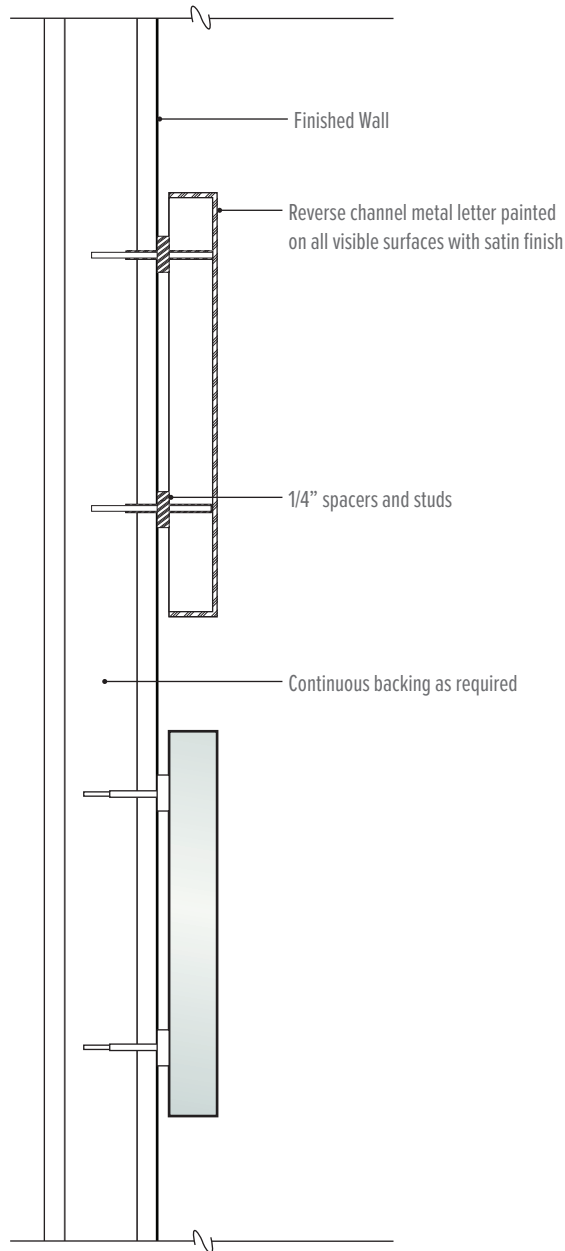
(B) Subsurface Painted

Note: Fabrication details shown are pre-approved by UC Davis Health. Any variance requests are to be provided as detail drawings to UC Davis Health for review and approval. The mounting methods shown on these pages have been developed for this sign program as a standard. Unique site conditions and local codes may require additional hardware or mounting fixtures not shown. In California Hospitals, HCAI requires that signs over 20 lbs. are attached to pre-installed bracing from the structure above for ceiling attached signs or wall backing for wall mounted signs. Sign Consultant should field verify sign locations and conditions or coordinate with the design team in order to evaluate the built conditions. If needed, Sign Consultant should coordinate with the project team architect or structural engineer for bracing or backing details in order to submit appropriate mounting methods for approval by HCAI and the AHJ prior to fabrication and installation.

Fabrication and Installation Details

FD.07

Fabricated Letters or Graphics, Flush Mounted



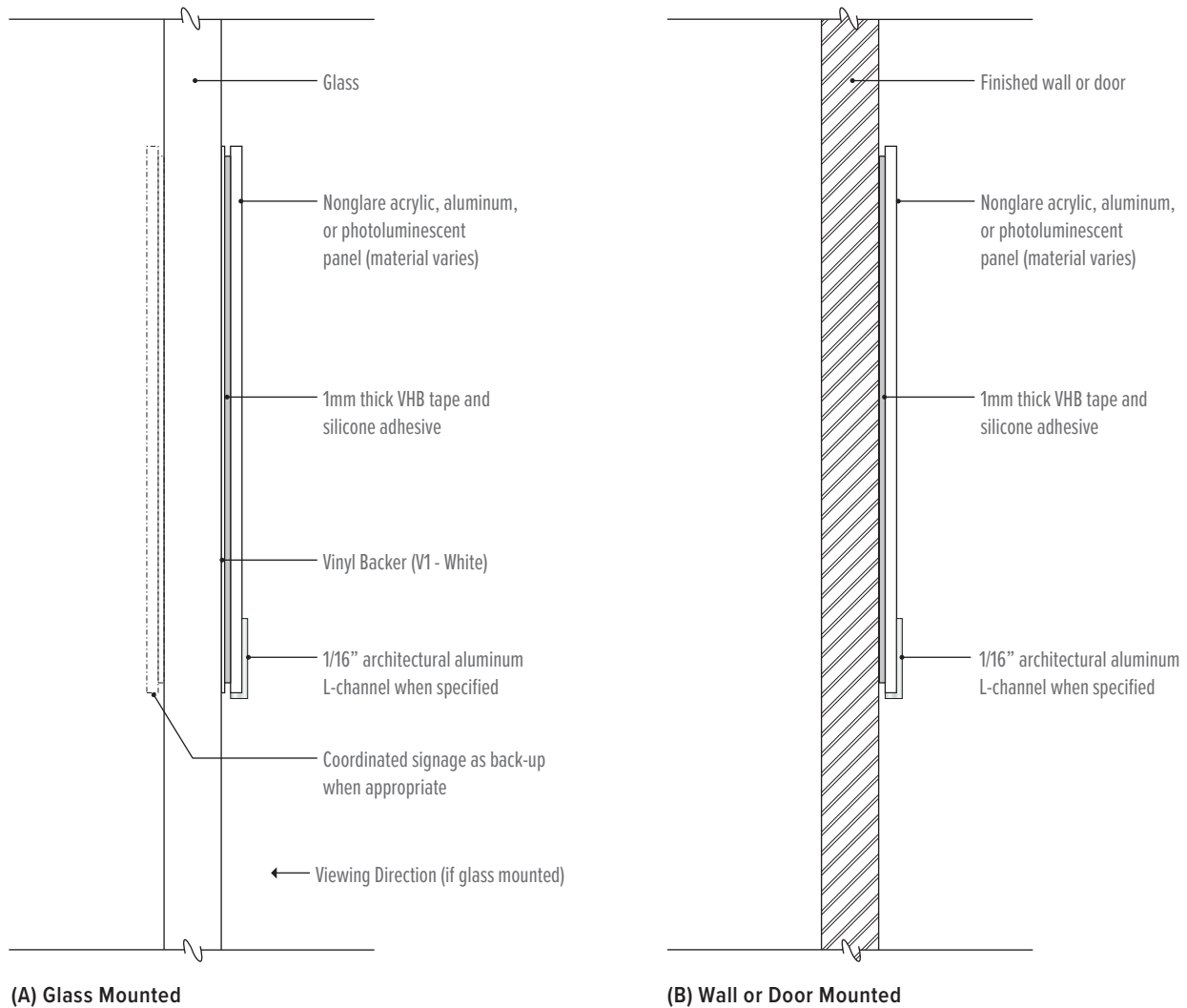
Note: Fabrication details shown are pre-approved by UC Davis Health. Any variance requests are to be provided as detail drawings to UC Davis Health for review and approval. The mounting methods shown on these pages have been developed for this sign program as a standard. Unique site conditions and local codes may require additional hardware or mounting fixtures not shown. In California Hospitals, HCAI requires that signs over 20 lbs. are attached to pre-installed bracing from the structure above for ceiling attached signs or wall backing for wall mounted signs. Sign Consultant should field verify sign locations and conditions or coordinate with the design team in order to evaluate the built conditions. If needed, Sign Consultant should coordinate with the project team architect or structural engineer for bracing or backing details in order to submit appropriate mounting methods for approval by HCAI and the AHJ prior to fabrication and installation.

Fabrication and Installation Details

FD.10

Wall or Door Mounted Plaque

- The need for a vinyl backup or coordinated signage as backup on glass mounted locations to be evaluated by Sign Consultant on a project specific basis to determine the appropriate installation detail for each location. Default placement of backup sign is top aligned and centered with the primary sign. Provide matte white vinyl backer equal to its height and width of both signs. This will ensure if one of the signs should be removed in the future, the remaining sign will have a properly sized vinyl backup already in place.
- Sign consultant expected to identify potential installation conflicts—such as wall protection or architectural conditions—during the design process. If signs cannot be installed per typical mounting standards due to such conflicts, the sign consultant must coordinate with the FP&D Signage Program Representative and the project team. An appropriate alternative installation solution is to be proposed for review and approval prior to implementation.



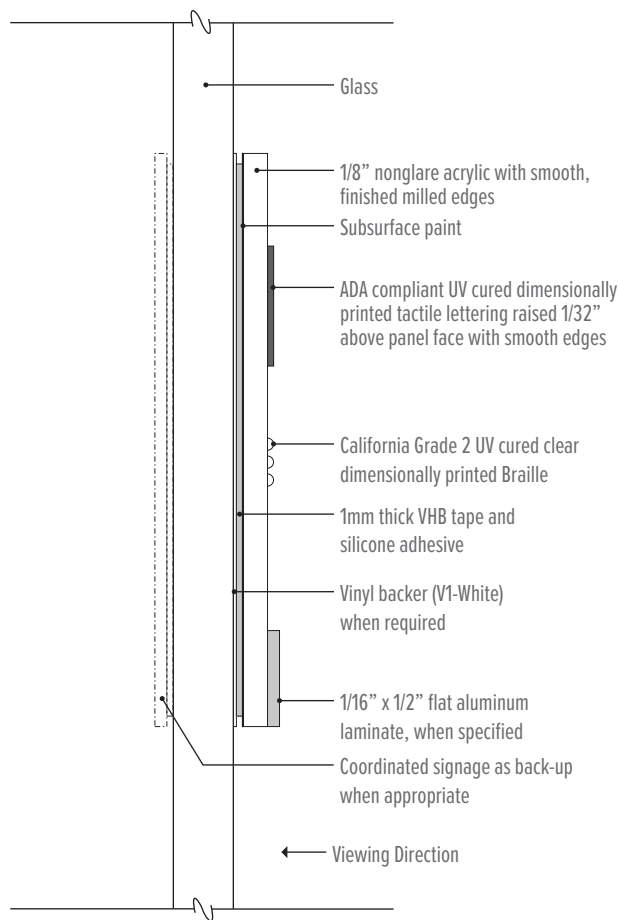
Note: Fabrication details shown are pre-approved by UC Davis Health. Any variance requests are to be provided as detail drawings to UC Davis Health for review and approval. The mounting methods shown on these pages have been developed for this sign program as a standard. Unique site conditions and local codes may require additional hardware or mounting fixtures not shown. In California Hospitals, HCAI requires that signs over 20 lbs. are attached to pre-installed bracing from the structure above for ceiling attached signs or wall backing for wall mounted signs. Sign Consultant should field verify sign locations and conditions or coordinate with the design team in order to evaluate the built conditions. If needed, Sign Consultant should coordinate with the project team architect or structural engineer for bracing or backing details in order to submit appropriate mounting methods for approval by HCAI and the AHJ prior to fabrication and installation.

Fabrication and Installation Details

FD.15

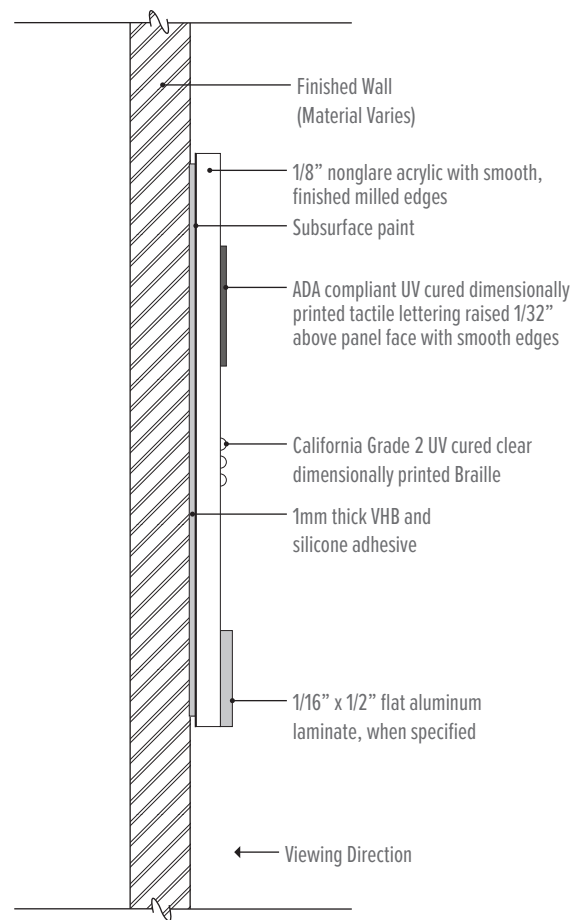
Wall Mounted Tactile Plaque

- The need for a vinyl backup or coordinated signage as backup on glass mounted locations to be evaluated by Sign Consultant on a project specific basis to determine the appropriate installation detail for each location. Default placement of backup sign is top aligned and centered with the primary sign. Provide matte white vinyl backer equal to its height and width of both signs. This will ensure if one of the signs should be removed in the future, the remaining sign will have a properly sized vinyl backup already in place.
- Sign consultant expected to identify potential installation conflicts—such as wall protection or architectural conditions—during the design process. If signs cannot be installed per typical mounting standards due to such conflicts, the sign consultant must coordinate with the FP&D Signage Program Representative and the project team. An appropriate alternative installation solution is to be proposed for review and approval prior to implementation.
- Tactile & Braille Fabrication: UV-cured dimensionally printed tactile lettering and Braille are the preferred standard. Alternate ADA-compliant fabrication methods, such as raster bead Braille or other processes, may be submitted for review.



(A) Glass Mounted

Where glass panel is less than 18" wide, center sign between vertical glazing mullions.



(B) Wall Mounted

Where wall is less than 18" wide, center sign between door frame and corner of wall.

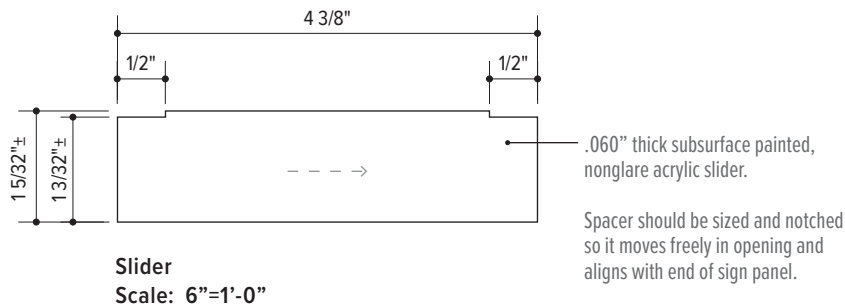
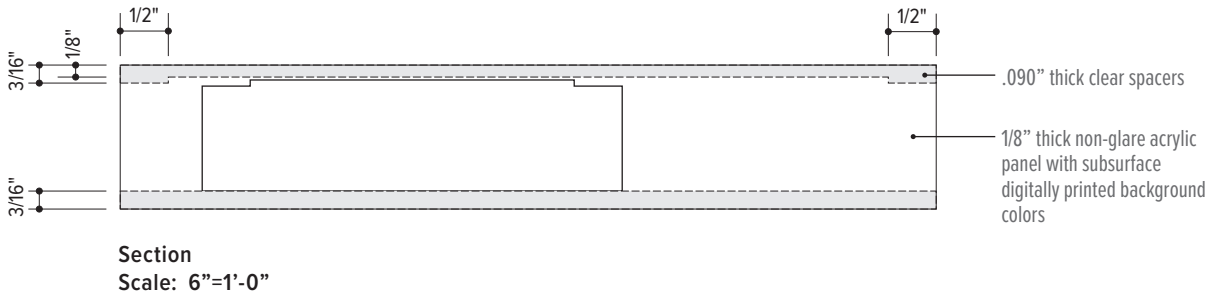
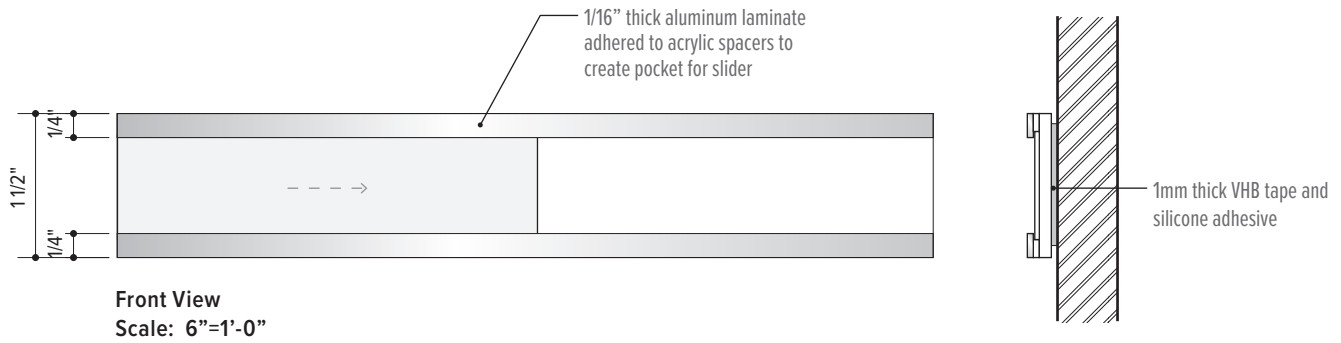
Note: Fabrication details shown are pre-approved by UC Davis Health. Any variance requests are to be provided as detail drawings to UC Davis Health for review and approval. The mounting methods shown on these pages have been developed for this sign program as a standard. Unique site conditions and local codes may require additional hardware or mounting fixtures not shown. In California Hospitals, HCAI requires that signs over 20 lbs. are attached to pre-installed bracing from the structure above for ceiling attached signs or wall backing for wall mounted signs. Sign Consultant should field verify sign locations and conditions or coordinate with the design team in order to evaluate the built conditions. If needed, Sign Consultant should coordinate with the project team architect or structural engineer for bracing or backing details in order to submit appropriate mounting methods for approval by HCAI and the AHJ prior to fabrication and installation.

Fabrication and Installation Details

FD.16

Wall Mounted In Use Slider

- Sign consultant expected to identify potential installation conflicts—such as wall protection or architectural conditions—during the design process. If signs cannot be installed per typical mounting standards due to such conflicts, the sign consultant must coordinate with the FP&D Signage Program Representative and the project team. An appropriate alternative installation solution is to be proposed for review and approval prior to implementation.

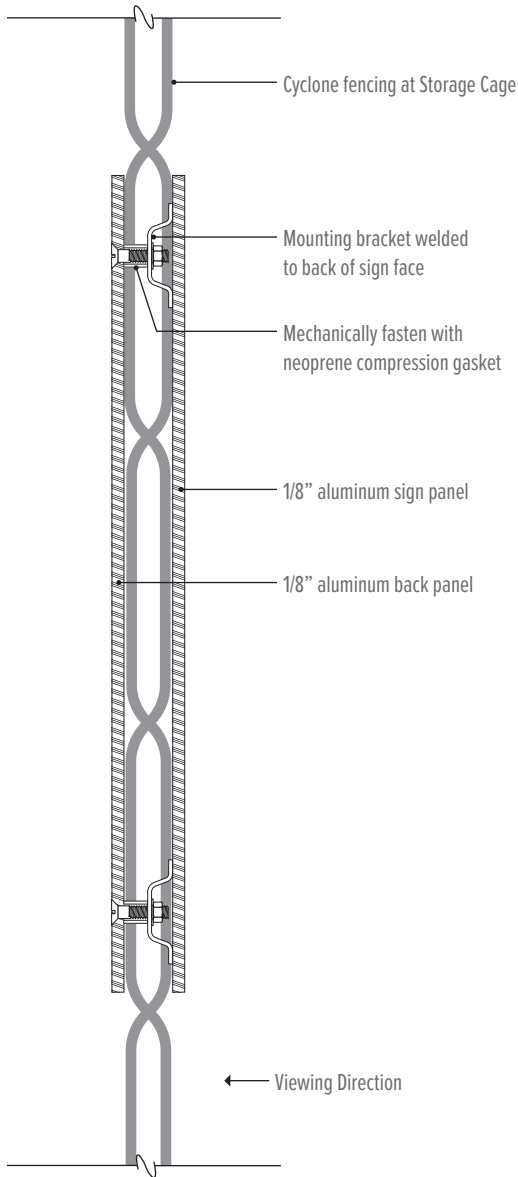


Note: Fabrication details shown are pre-approved by UC Davis Health. Any variance requests are to be provided as detail drawings to UC Davis Health for review and approval. The mounting methods shown on these pages have been developed for this sign program as a standard. Unique site conditions and local codes may require additional hardware or mounting fixtures not shown. In California Hospitals, HCAI requires that signs over 20 lbs. are attached to pre-installed bracing from the structure above for ceiling attached signs or wall backing for wall mounted signs. Sign Consultant should field verify sign locations and conditions or coordinate with the design team in order to evaluate the built conditions. If needed, Sign Consultant should coordinate with the project team architect or structural engineer for bracing or backing details in order to submit appropriate mounting methods for approval by HCAI and the AHJ prior to fabrication and installation.

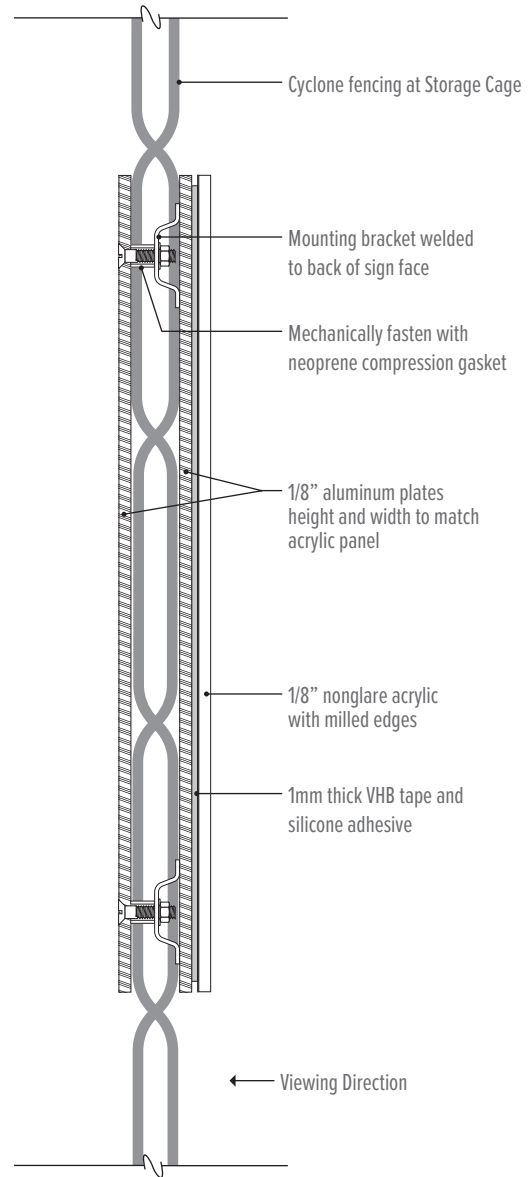
Fabrication and Installation Details

FD.19

Cyclone Fence Mounted



(A) Cyclone Fence Mounted - Aluminum Sign Panel



(B) Cyclone Fence Mounted - Acrylic Sign Panel

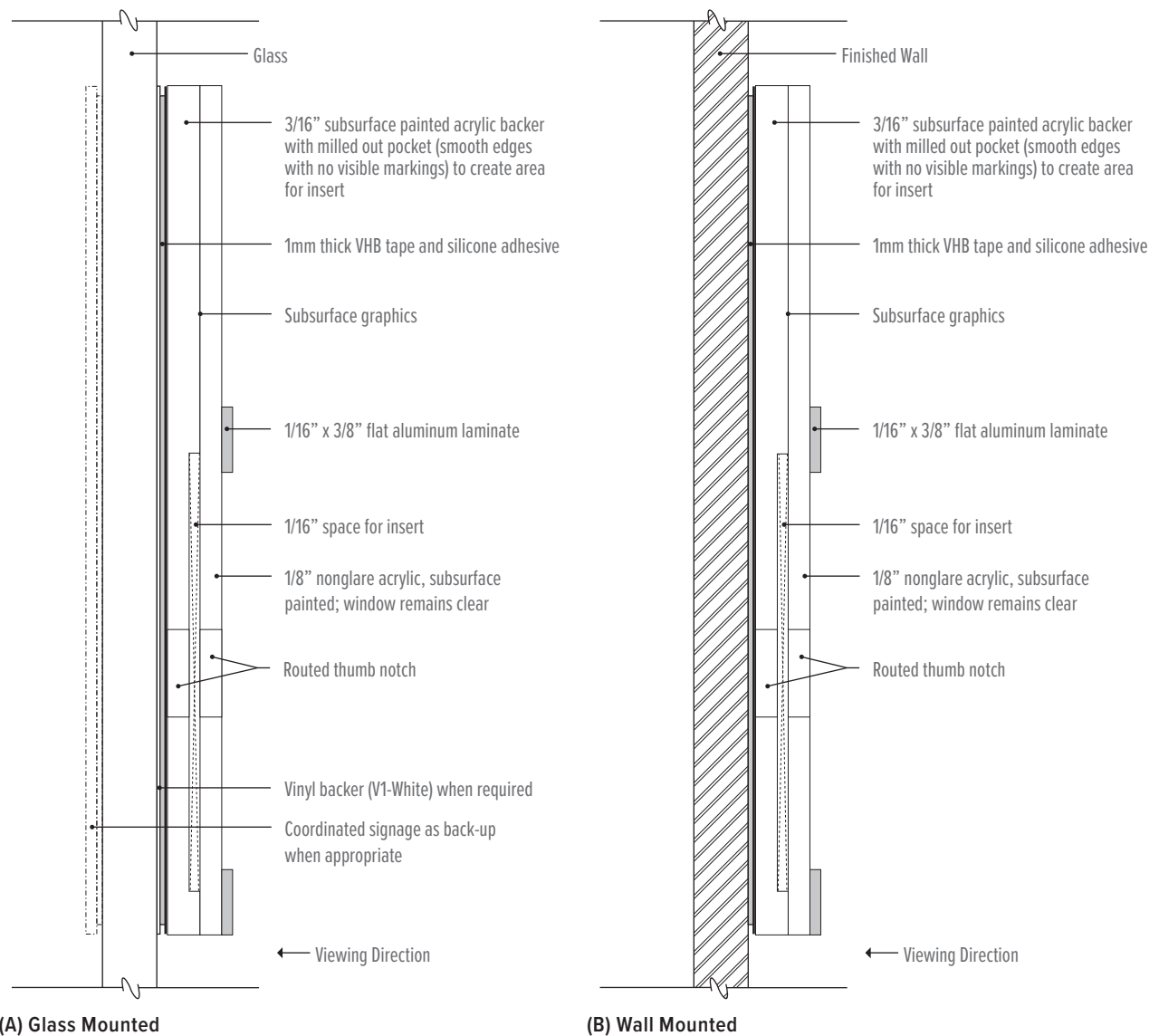
Note: Fabrication details shown are pre-approved by UC Davis Health. Any variance requests are to be provided as detail drawings to UC Davis Health for review and approval. The mounting methods shown on these pages have been developed for this sign program as a standard. Unique site conditions and local codes may require additional hardware or mounting fixtures not shown. In California Hospitals, HCAI requires that signs over 20 lbs. are attached to pre-installed bracing from the structure above for ceiling attached signs or wall backing for wall mounted signs. Sign Consultant should field verify sign locations and conditions or coordinate with the design team in order to evaluate the built conditions. If needed, Sign Consultant should coordinate with the project team architect or structural engineer for bracing or backing details in order to submit appropriate mounting methods for approval by HCAI and the AHJ prior to fabrication and installation.

Fabrication and Installation Details

FD.20

Wall Mounted Plaque with Insert Holder

- The need for a vinyl backup or coordinated signage as backup on glass mounted locations to be evaluated by Sign Consultant on a project specific basis to determine the appropriate installation detail for each location. Default placement of backup sign is top aligned and centered with the primary sign. Provide matte white vinyl backer equal to its height and width of both signs. This will ensure if one of the signs should be removed in the future, the remaining sign will have a properly sized vinyl backup already in place.
- Sign consultant expected to identify potential installation conflicts—such as wall protection or architectural conditions—during the design process. If signs cannot be installed per typical mounting standards due to such conflicts, the sign consultant must coordinate with the FP&D Signage Program Representative and the project team. An appropriate alternative installation solution is to be proposed for review and approval prior to implementation.



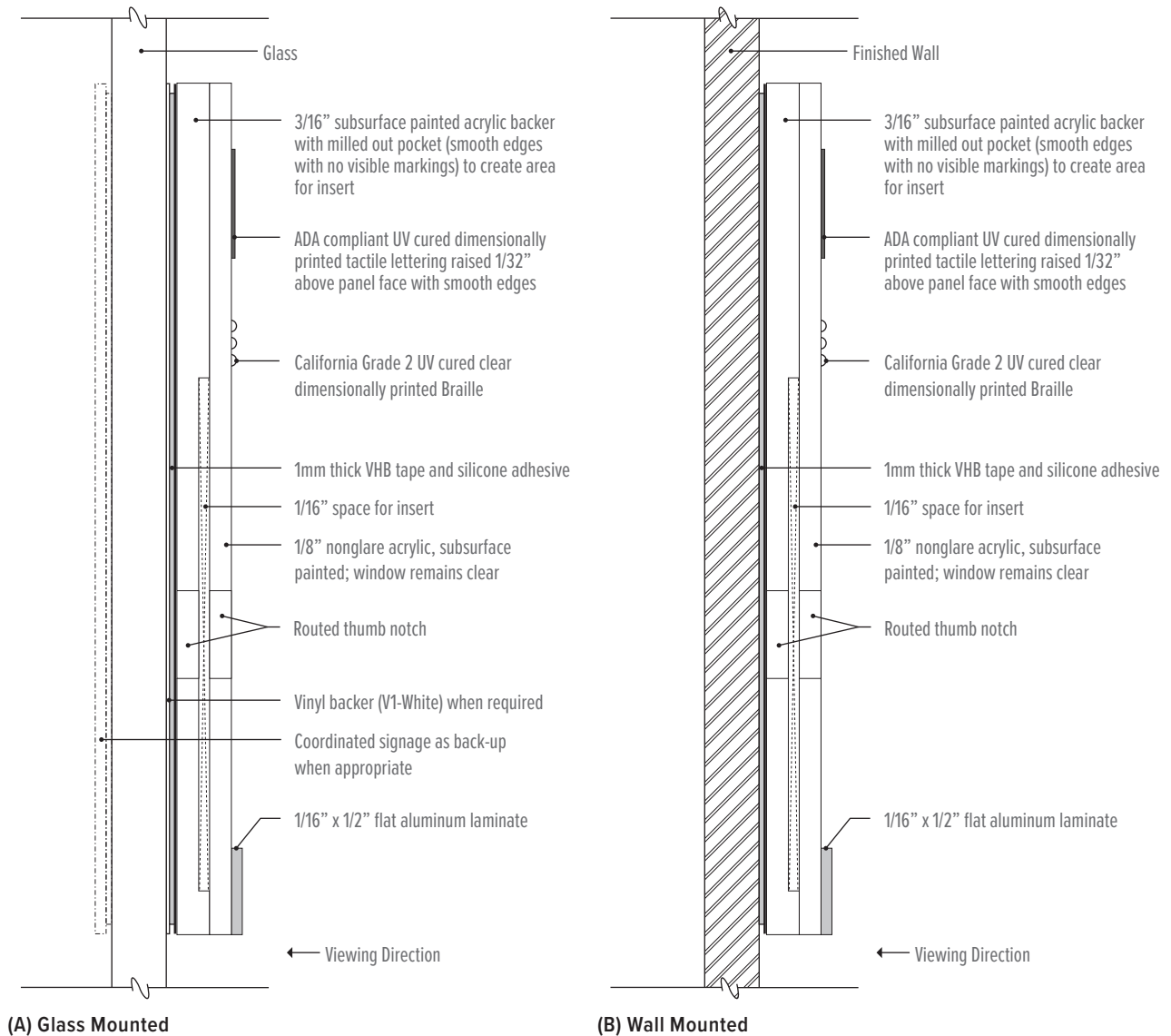
Note: Fabrication details shown are pre-approved by UC Davis Health. Any variance requests are to be provided as detail drawings to UC Davis Health for review and approval. The mounting methods shown on these pages have been developed for this sign program as a standard. Unique site conditions and local codes may require additional hardware or mounting fixtures not shown. In California Hospitals, HCAI requires that signs over 20 lbs. are attached to pre-installed bracing from the structure above for ceiling attached signs or wall backing for wall mounted signs. Sign Consultant should field verify sign locations and conditions or coordinate with the design team in order to evaluate the built conditions. If needed, Sign Consultant should coordinate with the project team architect or structural engineer for bracing or backing details in order to submit appropriate mounting methods for approval by HCAI and the AHJ prior to fabrication and installation.

Fabrication and Installation Details

FD.21

Wall Mounted Tactile Plaque with Insert Holder

- The need for a vinyl backup or coordinated signage as backup on glass mounted locations to be evaluated by Sign Consultant on a project specific basis to determine the appropriate installation detail for each location. Default placement of backup sign is top aligned and centered with the primary sign. Provide matte white vinyl backer equal to its height and width of both signs. This will ensure if one of the signs should be removed in the future, the remaining sign will have a properly sized vinyl backup already in place.
- Sign consultant expected to identify potential installation conflicts—such as wall protection or architectural conditions—during the design process. If signs cannot be installed per typical mounting standards due to such conflicts, the sign consultant must coordinate with the FP&D Signage Program Representative and the project team. An appropriate alternative installation solution is to be proposed for review and approval prior to implementation.
- Tactile & Braille Fabrication: UV-cured dimensionally printed tactile lettering and Braille are the preferred standard. Alternate ADA-compliant fabrication methods, such as raster bead Braille or other processes, may be submitted for review.



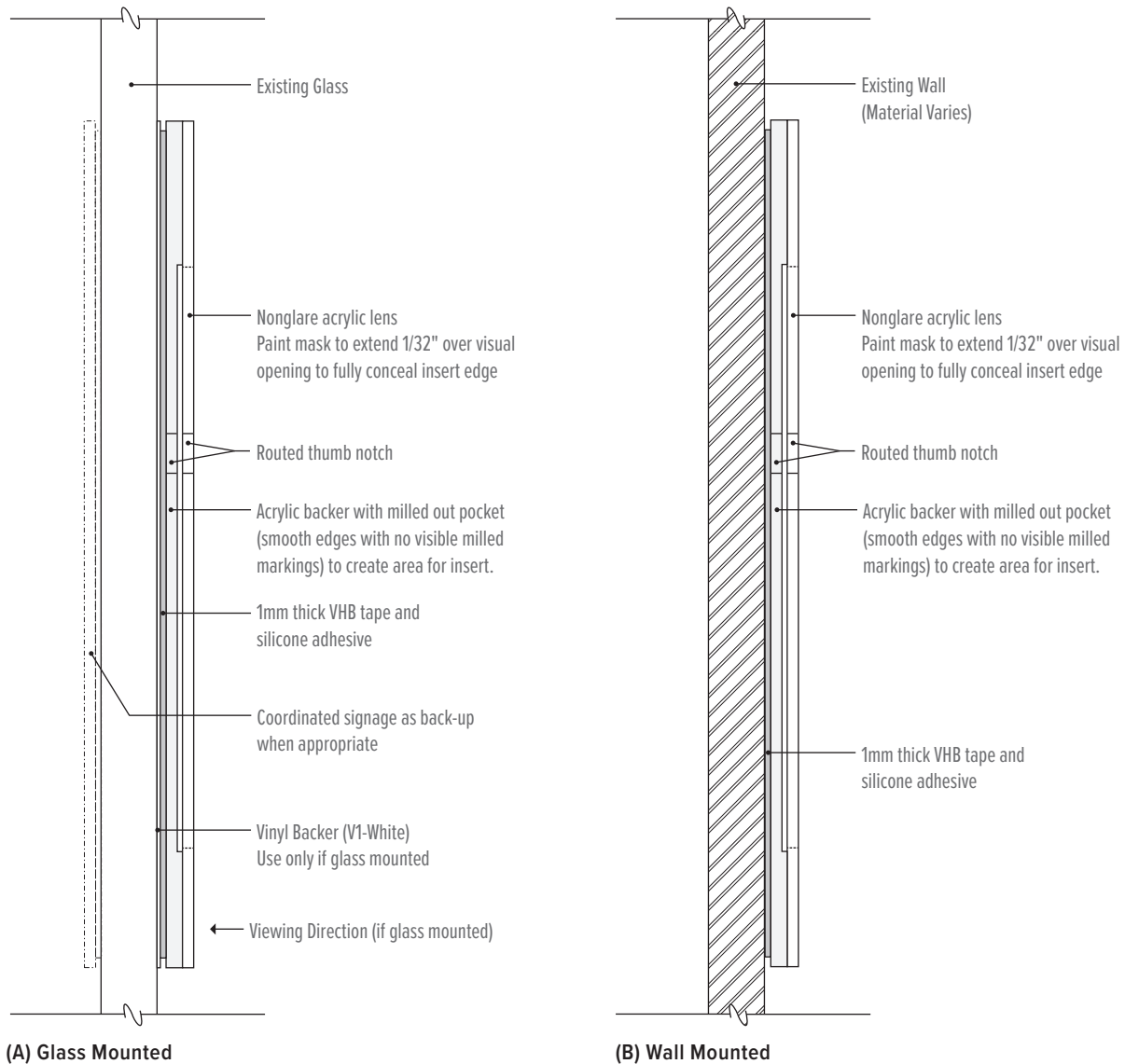
Note: Fabrication details shown are pre-approved by UC Davis Health. Any variance requests are to be provided as detail drawings to UC Davis Health for review and approval. The mounting methods shown on these pages have been developed for this sign program as a standard. Unique site conditions and local codes may require additional hardware or mounting fixtures not shown. In California Hospitals, HCAI requires that signs over 20 lbs. are attached to pre-installed bracing from the structure above for ceiling attached signs or wall backing for wall mounted signs. Sign Consultant should field verify sign locations and conditions or coordinate with the design team in order to evaluate the built conditions. If needed, Sign Consultant should coordinate with the project team architect or structural engineer for bracing or backing details in order to submit appropriate mounting methods for approval by HCAI and the AHJ prior to fabrication and installation.

Fabrication and Installation Details

FD.25

Evacuation Map Insert Holder, Wall Mounted

- The need for a vinyl backup or coordinated signage as backup on glass mounted locations to be evaluated by Sign Consultant on a project specific basis to determine the appropriate installation detail for each location. Default placement of backup sign is top aligned and centered with the primary sign. Provide matte white vinyl backer equal to its height and width of both signs. This will ensure if one of the signs should be removed in the future, the remaining sign will have a properly sized vinyl backup already in place.
- Sign consultant expected to identify potential installation conflicts—such as wall protection or architectural conditions—during the design process. If signs cannot be installed per typical mounting standards due to such conflicts, the sign consultant must coordinate with the FP&D Signage Program Representative and the project team. An appropriate alternative installation solution is to be proposed for review and approval prior to implementation.



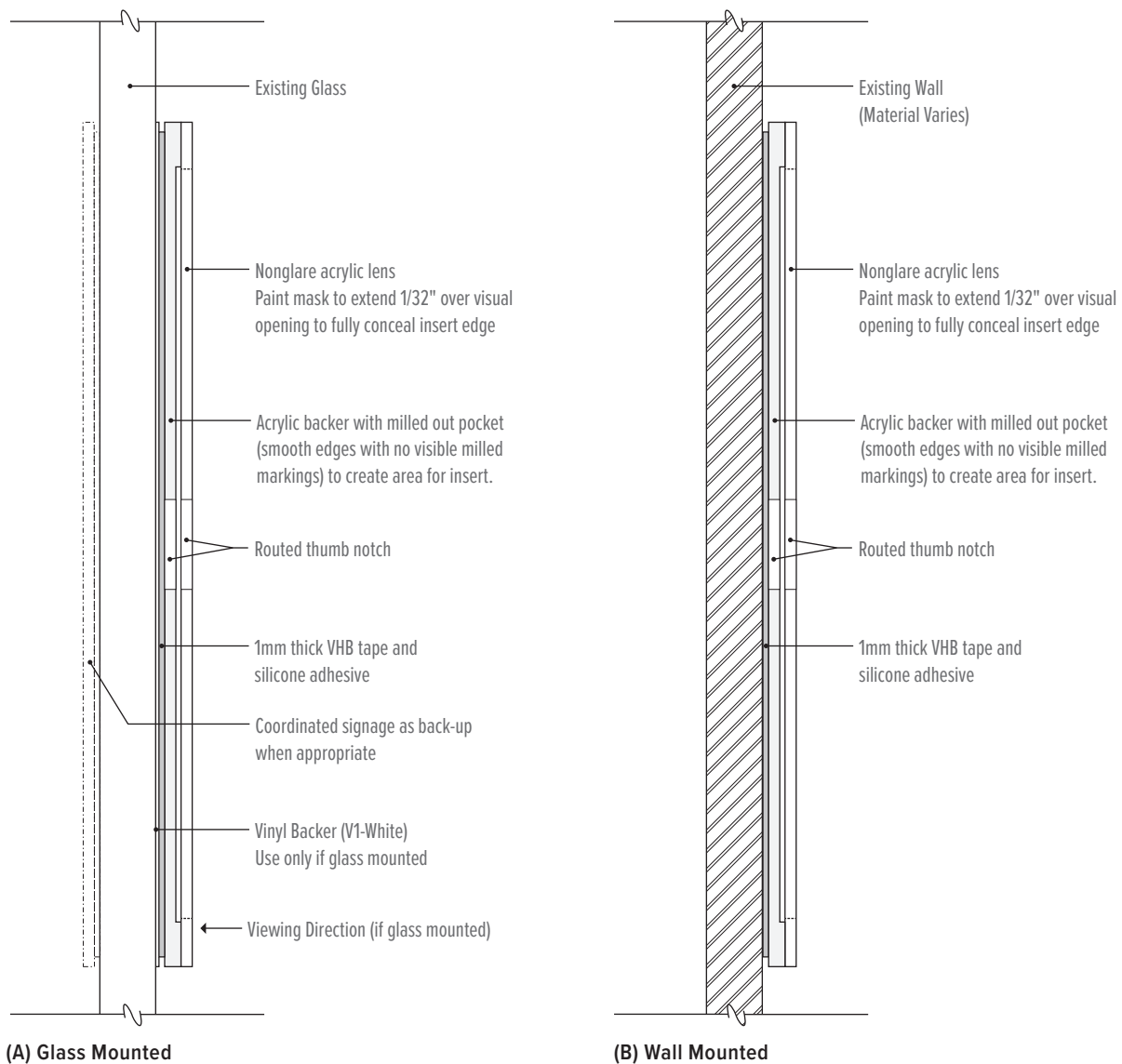
Note: Fabrication details shown are pre-approved by UC Davis Health. Any variance requests are to be provided as detail drawings to UC Davis Health for review and approval. The mounting methods shown on these pages have been developed for this sign program as a standard. Unique site conditions and local codes may require additional hardware or mounting fixtures not shown. In California Hospitals, HCAI requires that signs over 20 lbs. are attached to pre-installed bracing from the structure above for ceiling attached signs or wall backing for wall mounted signs. Sign Consultant should field verify sign locations and conditions or coordinate with the design team in order to evaluate the built conditions. If needed, Sign Consultant should coordinate with the project team architect or structural engineer for bracing or backing details in order to submit appropriate mounting methods for approval by HCAI and the AHJ prior to fabrication and installation.

Fabrication and Installation Details

FD.26

Insert Holder, Wall Mounted

- The need for a vinyl backup or coordinated signage as backup on glass mounted locations to be evaluated by Sign Consultant on a project specific basis to determine the appropriate installation detail for each location. Default placement of backup sign is top aligned and centered with the primary sign. Provide matte white vinyl backer equal to its height and width of both signs. This will ensure if one of the signs should be removed in the future, the remaining sign will have a properly sized vinyl backup already in place.
- Sign consultant expected to identify potential installation conflicts—such as wall protection or architectural conditions—during the design process. If signs cannot be installed per typical mounting standards due to such conflicts, the sign consultant must coordinate with the FP&D Signage Program Representative and the project team. An appropriate alternative installation solution is to be proposed for review and approval prior to implementation.

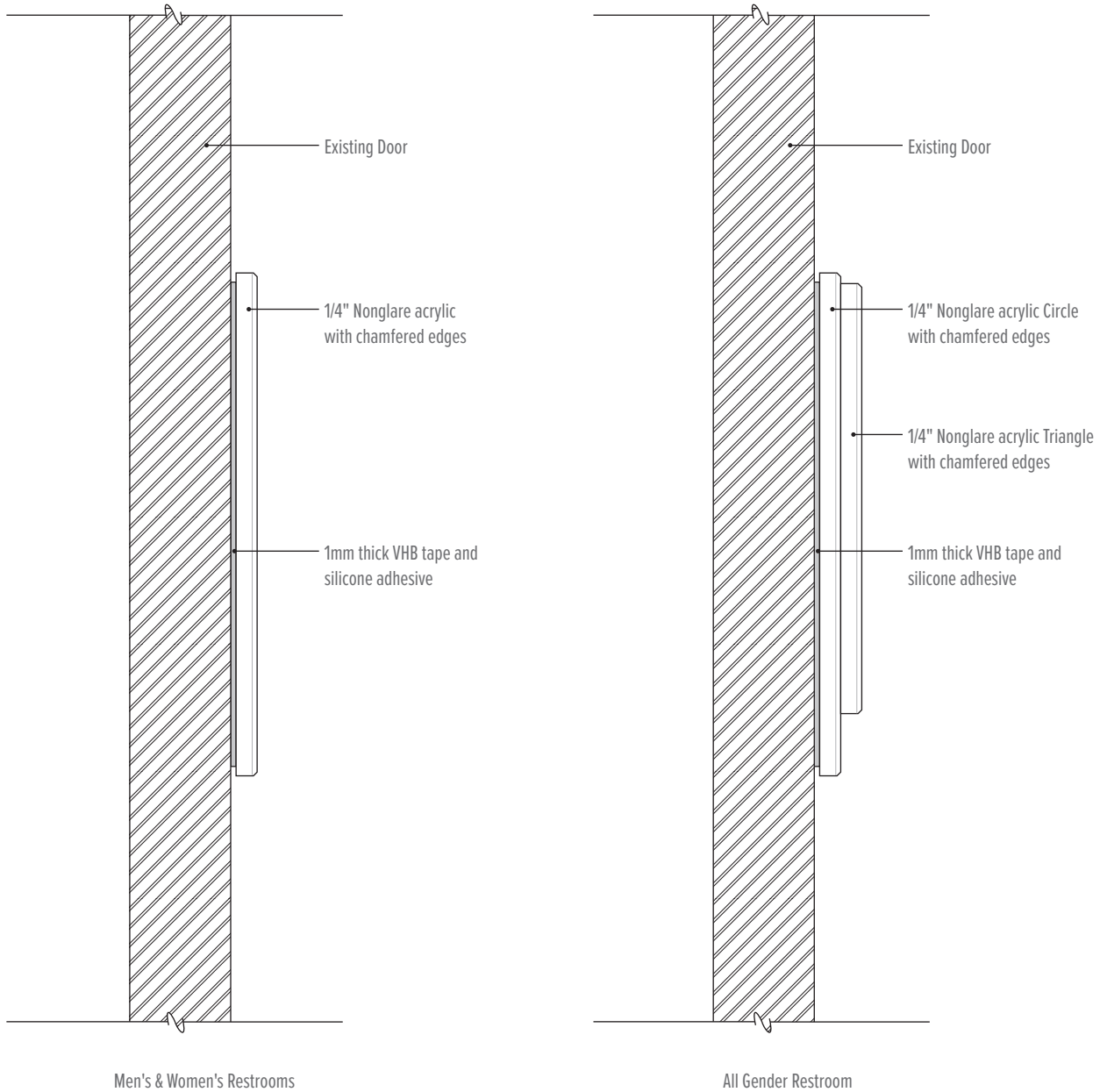


Note: Fabrication details shown are pre-approved by UC Davis Health. Any variance requests are to be provided as detail drawings to UC Davis Health for review and approval. The mounting methods shown on these pages have been developed for this sign program as a standard. Unique site conditions and local codes may require additional hardware or mounting fixtures not shown. In California Hospitals, HCAI requires that signs over 20 lbs. are attached to pre-installed bracing from the structure above for ceiling attached signs or wall backing for wall mounted signs. Sign Consultant should field verify sign locations and conditions or coordinate with the design team in order to evaluate the built conditions. If needed, Sign Consultant should coordinate with the project team architect or structural engineer for bracing or backing details in order to submit appropriate mounting methods for approval by HCAI and the AHJ prior to fabrication and installation.

Fabrication and Installation Details

FD.30

Restroom Symbol Identification



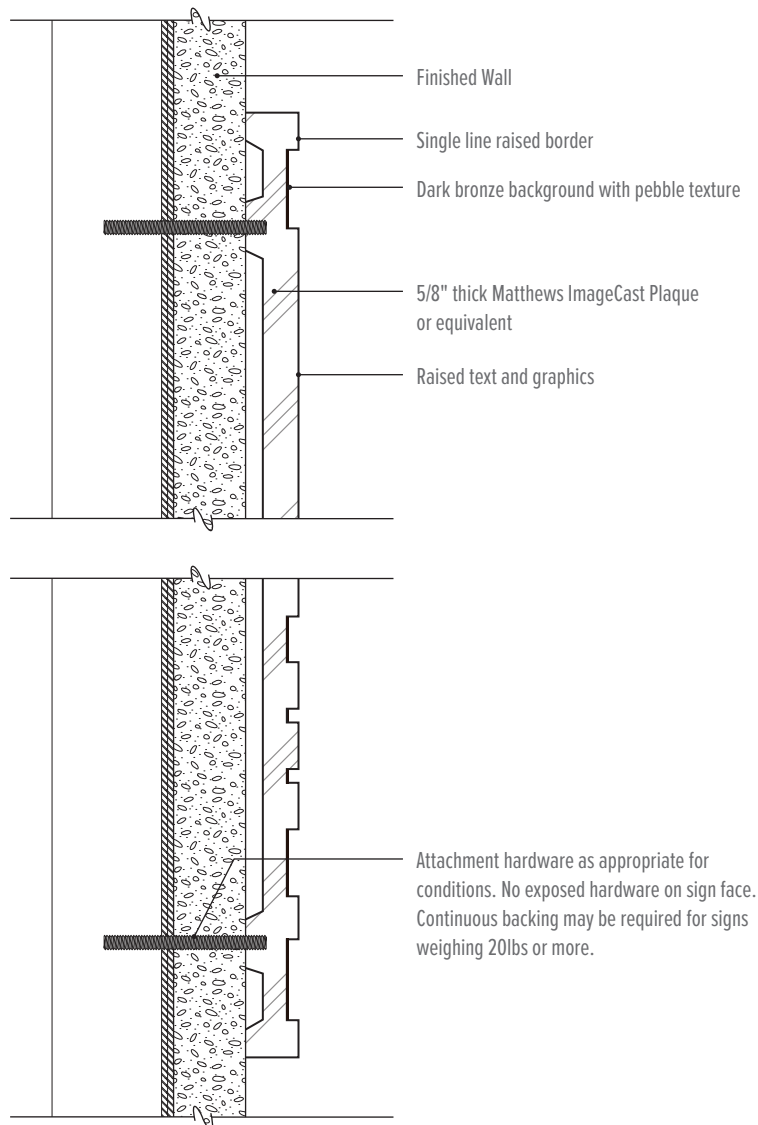
Note: Fabrication details shown are pre-approved by UC Davis Health. Any variance requests are to be provided as detail drawings to UC Davis Health for review and approval. The mounting methods shown on these pages have been developed for this sign program as a standard. Unique site conditions and local codes may require additional hardware or mounting fixtures not shown. In California Hospitals, HCAI requires that signs over 20 lbs. are attached to pre-installed bracing from the structure above for ceiling attached signs or wall backing for wall mounted signs. Sign Consultant should field verify sign locations and conditions or coordinate with the design team in order to evaluate the built conditions. If needed, Sign Consultant should coordinate with the project team architect or structural engineer for bracing or backing details in order to submit appropriate mounting methods for approval by HCAI and the AHJ prior to fabrication and installation.

Fabrication and Installation Details

FD.35

Building Legacy ID

- Sign consultant expected to identify potential installation conflicts—such as wall protection or architectural conditions—during the design process. If signs cannot be installed per typical mounting standards due to such conflicts, the sign consultant must coordinate with the FP&D Signage Program Representative and the project team. An appropriate alternative installation solution is to be proposed for review and approval prior to implementation.

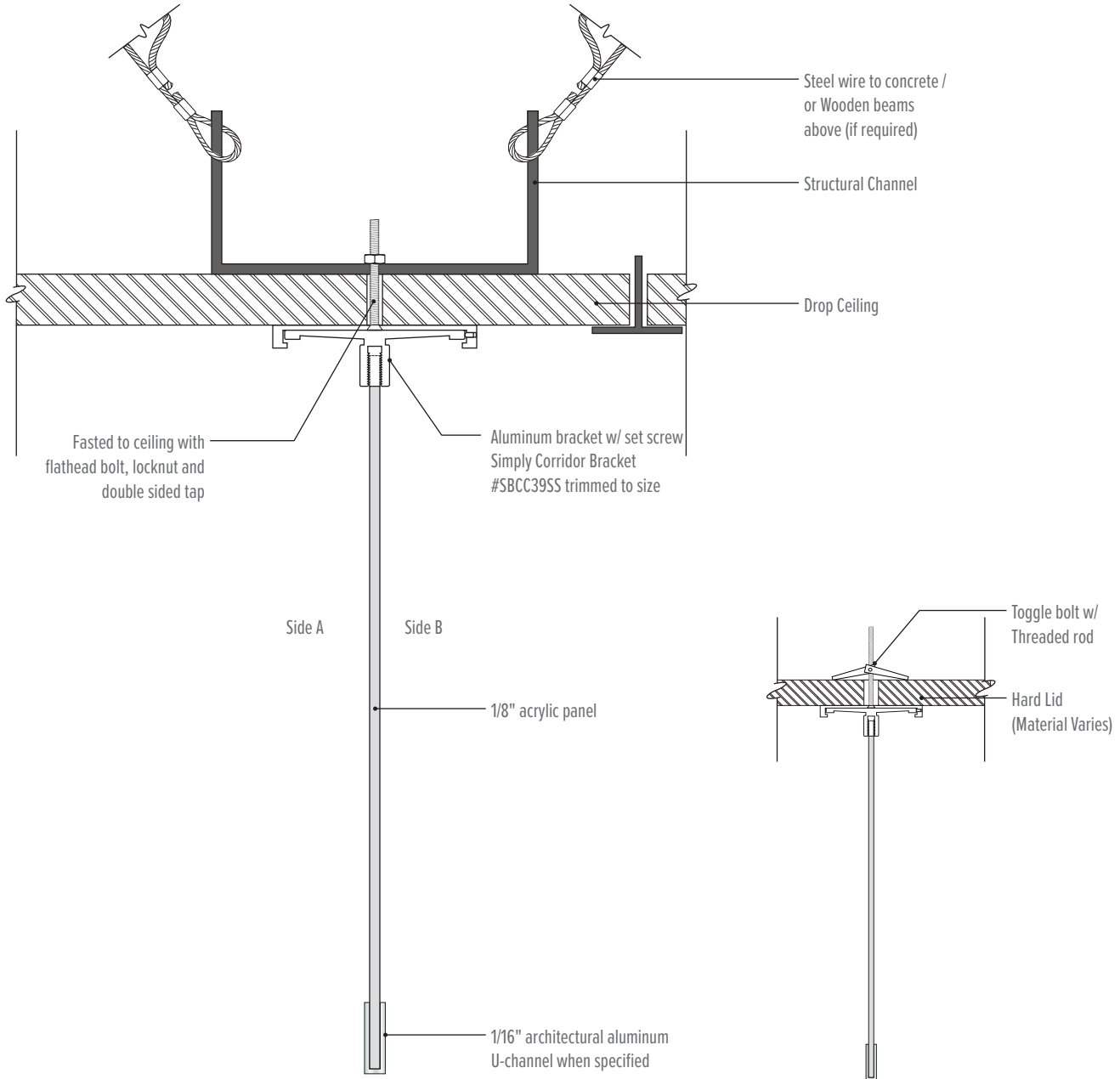


Note: Fabrication details shown are pre-approved by UC Davis Health. Any variance requests are to be provided as detail drawings to UC Davis Health for review and approval. The mounting methods shown on these pages have been developed for this sign program as a standard. Unique site conditions and local codes may require additional hardware or mounting fixtures not shown. In California Hospitals, HCAI requires that signs over 20 lbs. are attached to pre-installed bracing from the structure above for ceiling attached signs or wall backing for wall mounted signs. Sign Consultant should field verify sign locations and conditions or coordinate with the design team in order to evaluate the built conditions. If needed, Sign Consultant should coordinate with the project team architect or structural engineer for bracing or backing details in order to submit appropriate mounting methods for approval by HCAI and the AHJ prior to fabrication and installation.

Fabrication and Installation Details

FD.41

Ceiling Mounted Bracket

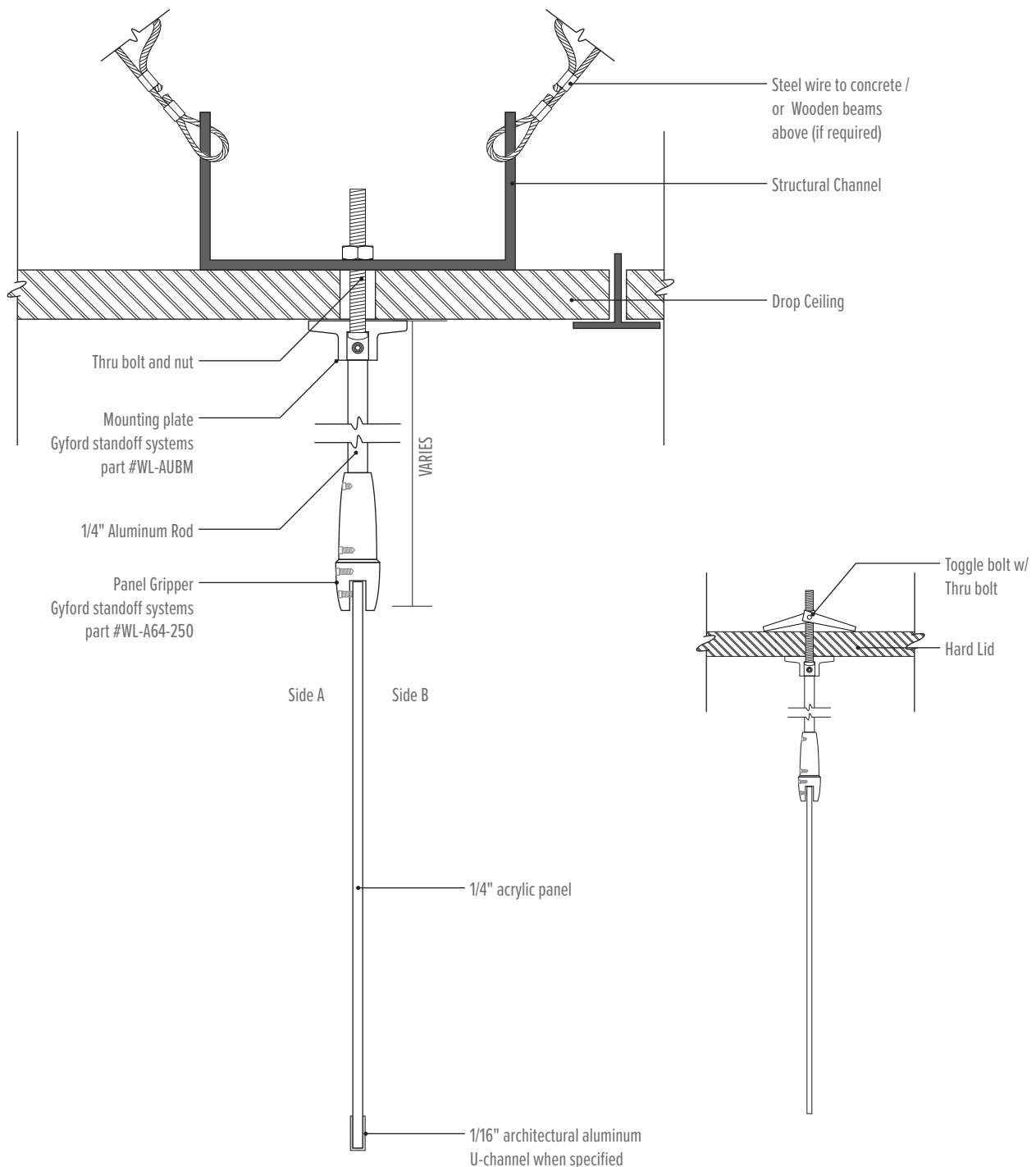


Note: Fabrication details shown are pre-approved by UC Davis Health. Any variance requests are to be provided as detail drawings to UC Davis Health for review and approval. The mounting methods shown on these pages have been developed for this sign program as a standard. Unique site conditions and local codes may require additional hardware or mounting fixtures not shown. In California Hospitals, HCAI requires that signs over 20 lbs. are attached to pre-installed bracing from the structure above for ceiling attached signs or wall backing for wall mounted signs. Sign Consultant should field verify sign locations and conditions or coordinate with the design team in order to evaluate the built conditions. If needed, Sign Consultant should coordinate with the project team architect or structural engineer for bracing or backing details in order to submit appropriate mounting methods for approval by HCAI and the AHJ prior to fabrication and installation.

Fabrication and Installation Details

FD.45

Interior Cable Suspended

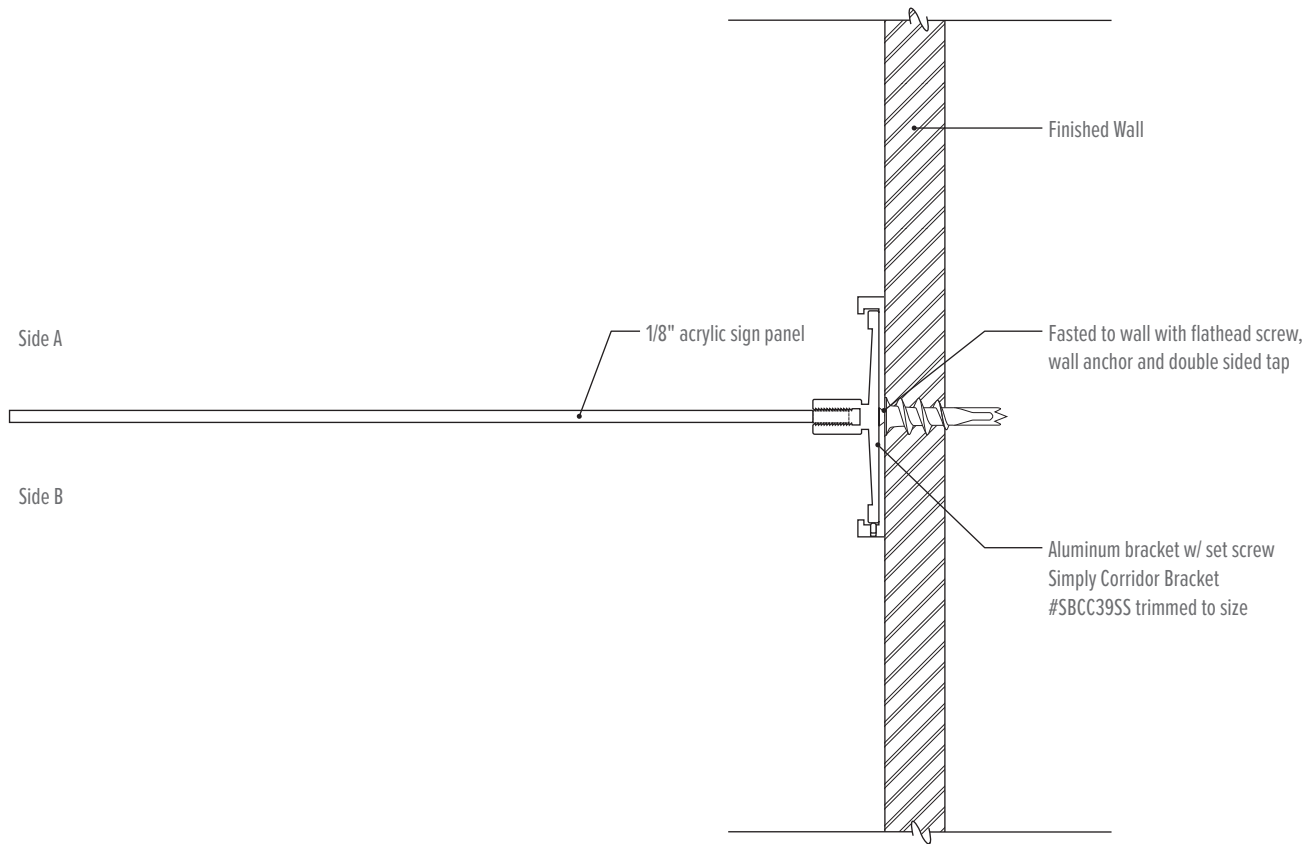


Note: Fabrication details shown are pre-approved by UC Davis Health. Any variance requests are to be provided as detail drawings to UC Davis Health for review and approval. The mounting methods shown on these pages have been developed for this sign program as a standard. Unique site conditions and local codes may require additional hardware or mounting fixtures not shown. In California Hospitals, HCAI requires that signs over 20 lbs. are attached to pre-installed bracing from the structure above for ceiling attached signs or wall backing for wall mounted signs. Sign Consultant should field verify sign locations and conditions or coordinate with the design team in order to evaluate the built conditions. If needed, Sign Consultant should coordinate with the project team architect or structural engineer for bracing or backing details in order to submit appropriate mounting methods for approval by HCAI and the AHJ prior to fabrication and installation.

Fabrication and Installation Details

FD.50

Flag Mounted Bracket



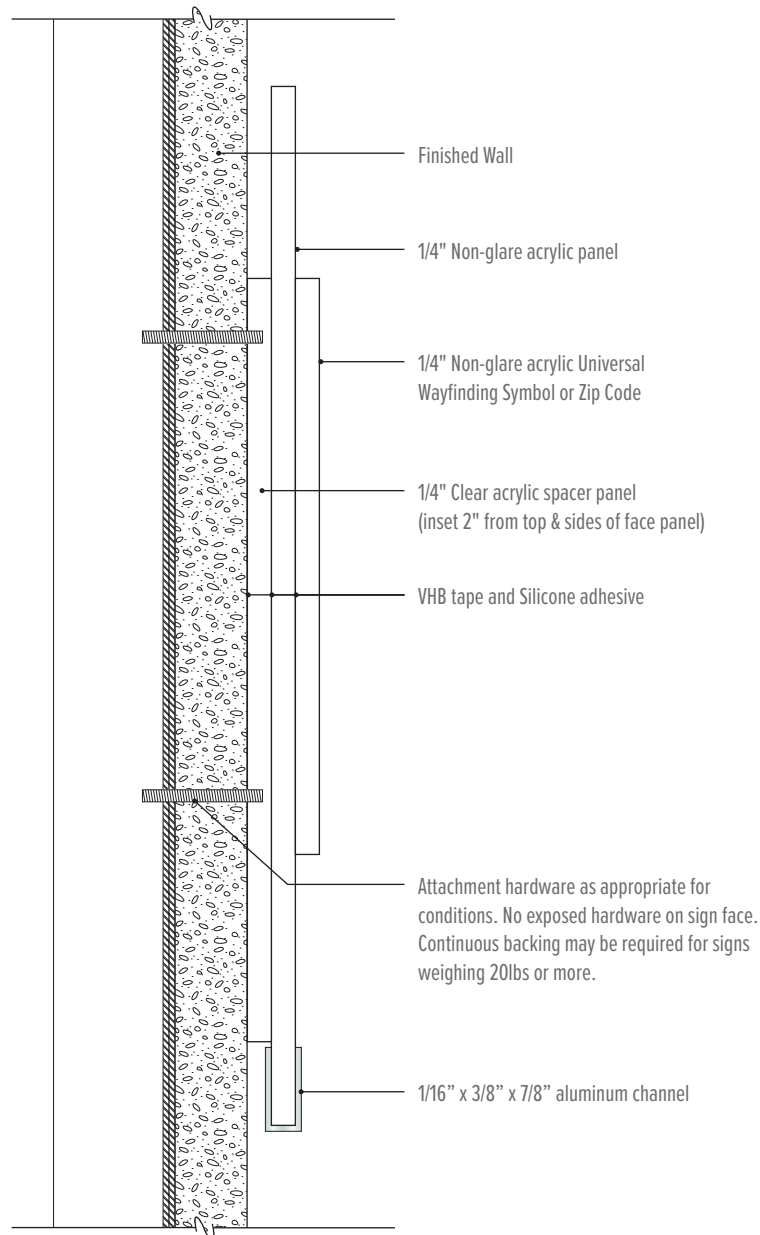
Note: Fabrication details shown are pre-approved by UC Davis Health. Any variance requests are to be provided as detail drawings to UC Davis Health for review and approval. The mounting methods shown on these pages have been developed for this sign program as a standard. Unique site conditions and local codes may require additional hardware or mounting fixtures not shown. In California Hospitals, HCAI requires that signs over 20 lbs. are attached to pre-installed bracing from the structure above for ceiling attached signs or wall backing for wall mounted signs. Sign Consultant should field verify sign locations and conditions or coordinate with the design team in order to evaluate the built conditions. If needed, Sign Consultant should coordinate with the project team architect or structural engineer for bracing or backing details in order to submit appropriate mounting methods for approval by HCAI and the AHJ prior to fabrication and installation.

Fabrication and Installation Details

FD.55

Department Identification, Horizontal

- Sign consultant expected to identify potential installation conflicts—such as wall protection or architectural conditions—during the design process. If signs cannot be installed per typical mounting standards due to such conflicts, the sign consultant must coordinate with the FP&D Signage Program Representative and the project team. An appropriate alternative installation solution is to be proposed for review and approval prior to implementation.



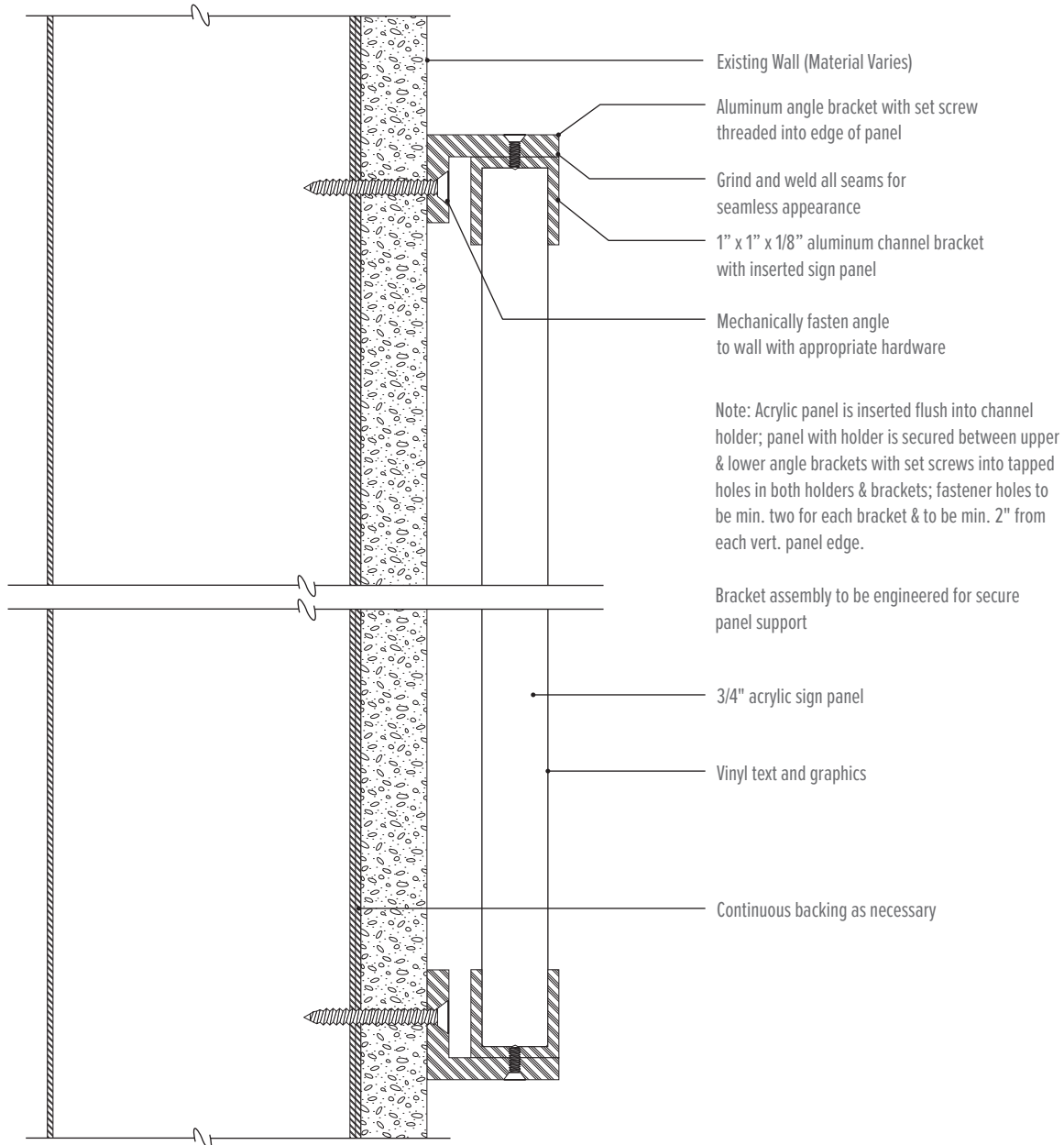
Note: Fabrication details shown are pre-approved by UC Davis Health. Any variance requests are to be provided as detail drawings to UC Davis Health for review and approval. The mounting methods shown on these pages have been developed for this sign program as a standard. Unique site conditions and local codes may require additional hardware or mounting fixtures not shown. In California Hospitals, HCAI requires that signs over 20 lbs. are attached to pre-installed bracing from the structure above for ceiling attached signs or wall backing for wall mounted signs. Sign Consultant should field verify sign locations and conditions or coordinate with the design team in order to evaluate the built conditions. If needed, Sign Consultant should coordinate with the project team architect or structural engineer for bracing or backing details in order to submit appropriate mounting methods for approval by HCAI and the AHJ prior to fabrication and installation.

Fabrication and Installation Details

FD.56

Department Identification, Vertical

- Sign consultant expected to identify potential installation conflicts—such as wall protection or architectural conditions—during the design process. If signs cannot be installed per typical mounting standards due to such conflicts, the sign consultant must coordinate with the FP&D Signage Program Representative and the project team. An appropriate alternative installation solution is to be proposed for review and approval prior to implementation.

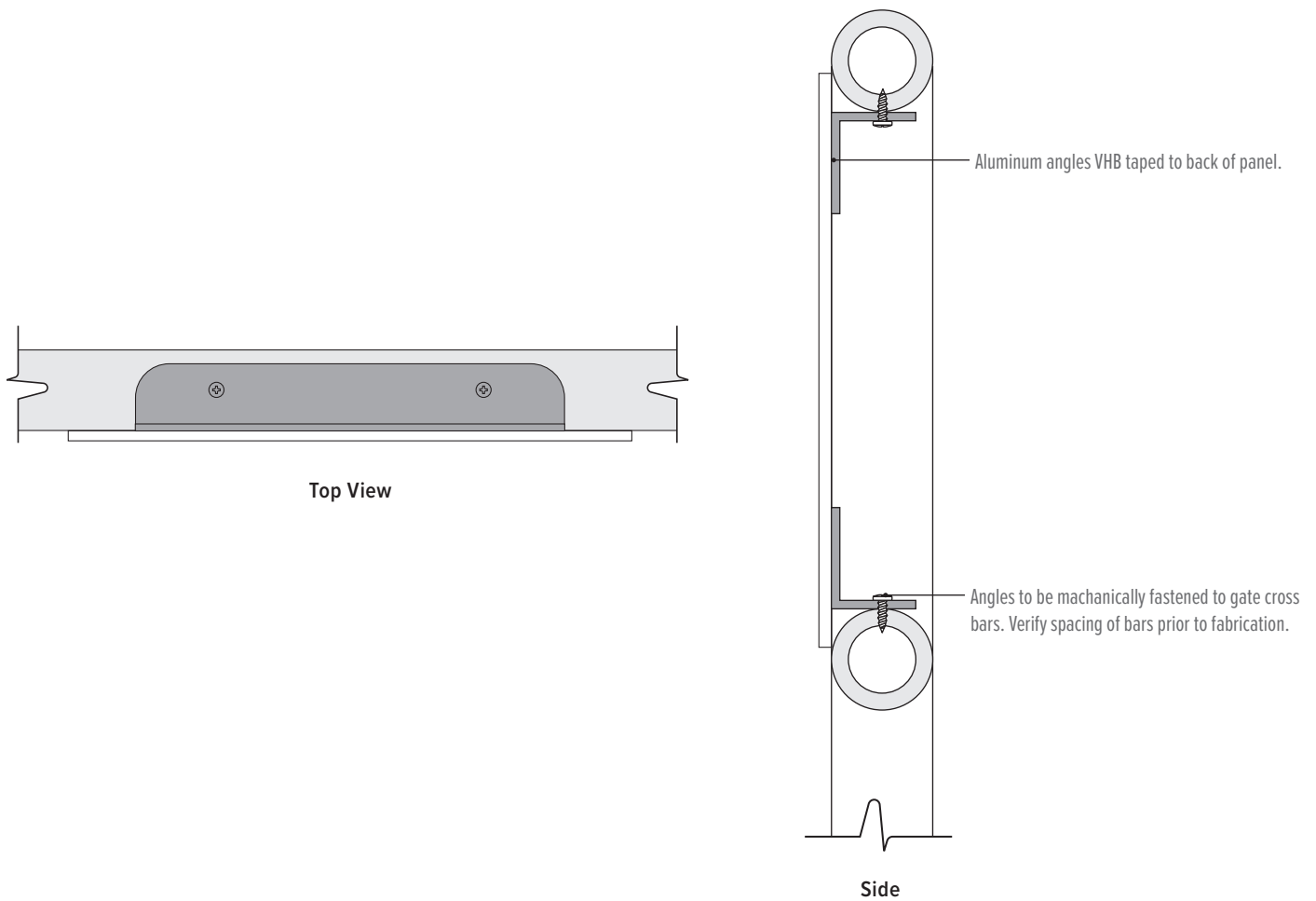


Note: Fabrication details shown are pre-approved by UC Davis Health. Any variance requests are to be provided as detail drawings to UC Davis Health for review and approval. The mounting methods shown on these pages have been developed for this sign program as a standard. Unique site conditions and local codes may require additional hardware or mounting fixtures not shown. In California Hospitals, HCAI requires that signs over 20 lbs. are attached to pre-installed bracing from the structure above for ceiling attached signs or wall backing for wall mounted signs. Sign Consultant should field verify sign locations and conditions or coordinate with the design team in order to evaluate the built conditions. If needed, Sign Consultant should coordinate with the project team architect or structural engineer for bracing or backing details in order to submit appropriate mounting methods for approval by HCAI and the AHJ prior to fabrication and installation.

Fabrication and Installation Details

FD.60

Gate Mounted



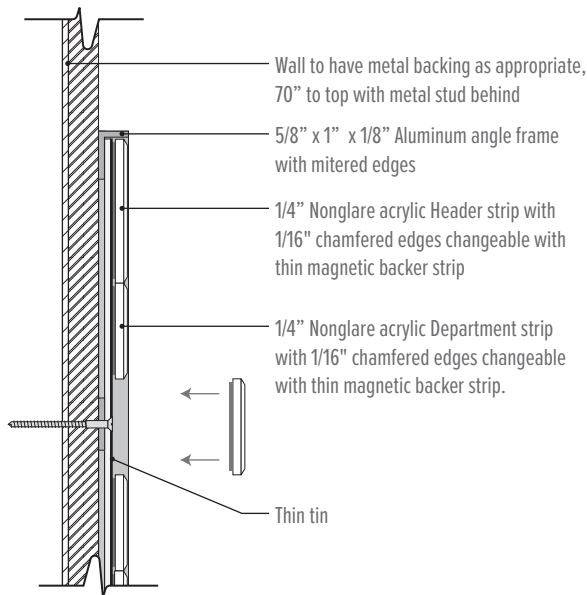
Note: Fabrication details shown are pre-approved by UC Davis Health. Any variance requests are to be provided as detail drawings to UC Davis Health for review and approval. The mounting methods shown on these pages have been developed for this sign program as a standard. Unique site conditions and local codes may require additional hardware or mounting fixtures not shown. In California Hospitals, HCAI requires that signs over 20 lbs. are attached to pre-installed bracing from the structure above for ceiling attached signs or wall backing for wall mounted signs. Sign Consultant should field verify sign locations and conditions or coordinate with the design team in order to evaluate the built conditions. If needed, Sign Consultant should coordinate with the project team architect or structural engineer for bracing or backing details in order to submit appropriate mounting methods for approval by HCAI and the AHJ prior to fabrication and installation.

Fabrication and Installation Details

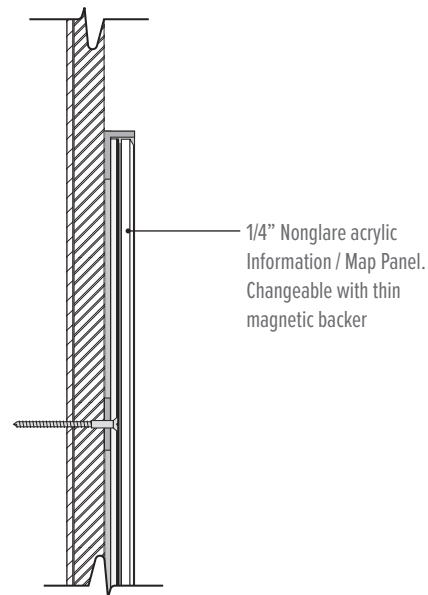
FD.70

Directory with Changeable Strips/Panel, Wall Mounted

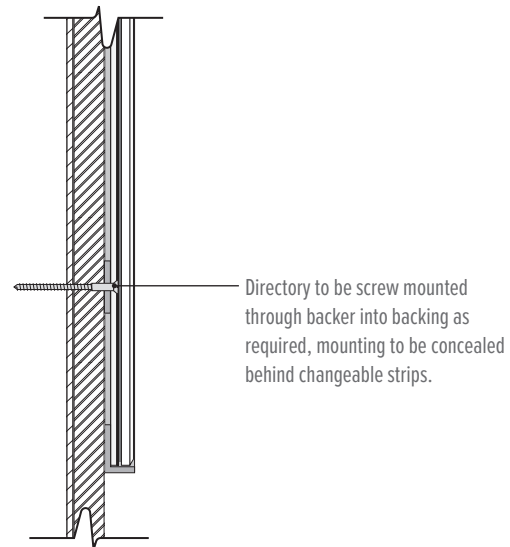
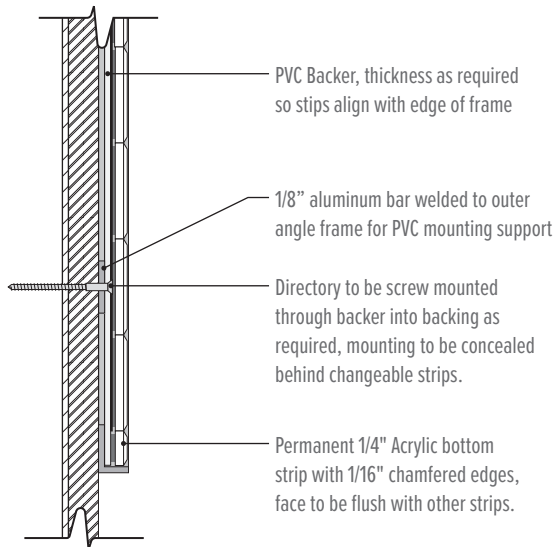
- Sign consultant expected to identify potential installation conflicts—such as wall protection or architectural conditions—during the design process. If signs cannot be installed per typical mounting standards due to such conflicts, the sign consultant must coordinate with the FP&D Signage Program Representative and the project team. An appropriate alternative installation solution is to be proposed for review and approval prior to implementation.



Panel with small removable slats



Large removable map panel



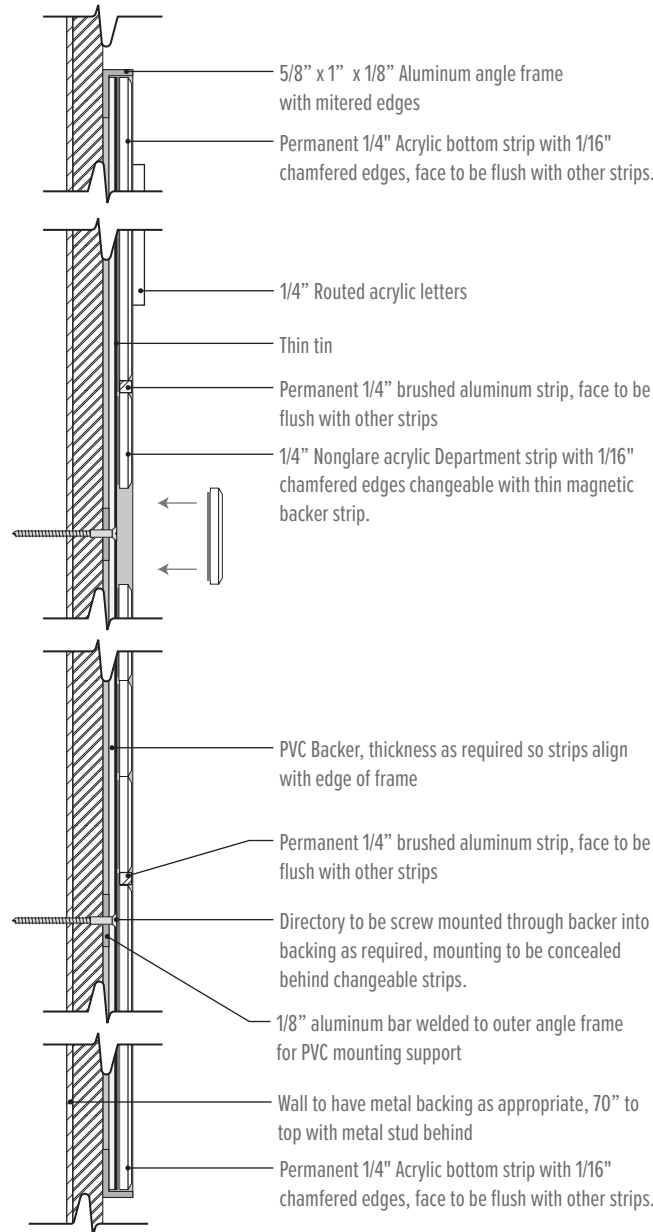
Note: Fabrication details shown are pre-approved by UC Davis Health. Any variance requests are to be provided as detail drawings to UC Davis Health for review and approval. The mounting methods shown on these pages have been developed for this sign program as a standard. Unique site conditions and local codes may require additional hardware or mounting fixtures not shown. In California Hospitals, HCAI requires that signs over 20 lbs. are attached to pre-installed bracing from the structure above for ceiling attached signs or wall backing for wall mounted signs. Sign Consultant should field verify sign locations and conditions or coordinate with the design team in order to evaluate the built conditions. If needed, Sign Consultant should coordinate with the project team architect or structural engineer for bracing or backing details in order to submit appropriate mounting methods for approval by HCAI and the AHJ prior to fabrication and installation.

Fabrication and Installation Details

FD.71

Large Directory with Changeable Strips/Panel, Wall Mounted

- Sign consultant expected to identify potential installation conflicts—such as wall protection or architectural conditions—during the design process. If signs cannot be installed per typical mounting standards due to such conflicts, the sign consultant must coordinate with the FP&D Signage Program Representative and the project team. An appropriate alternative installation solution is to be proposed for review and approval prior to implementation.



Panels with small and large removable slats

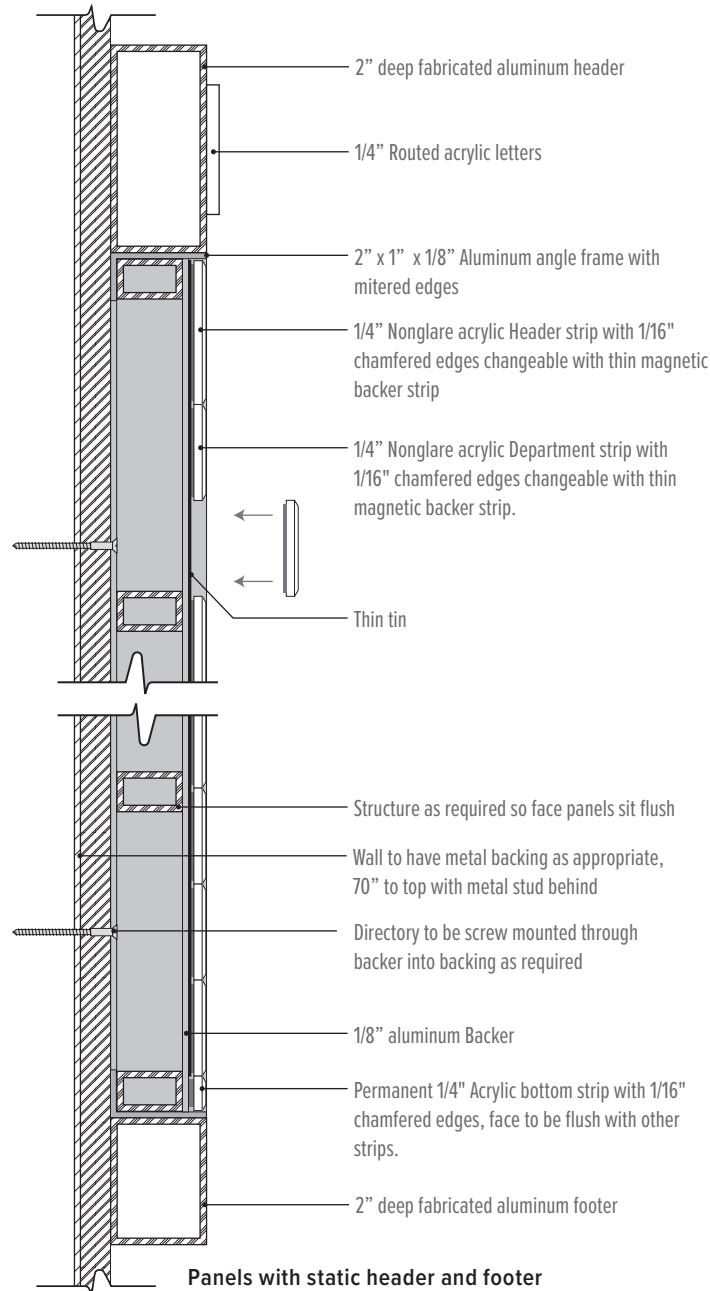
Note: Fabrication details shown are pre-approved by UC Davis Health. Any variance requests are to be provided as detail drawings to UC Davis Health for review and approval. The mounting methods shown on these pages have been developed for this sign program as a standard. Unique site conditions and local codes may require additional hardware or mounting fixtures not shown. In California Hospitals, HCAI requires that signs over 20 lbs. are attached to pre-installed bracing from the structure above for ceiling attached signs or wall backing for wall mounted signs. Sign Consultant should field verify sign locations and conditions or coordinate with the design team in order to evaluate the built conditions. If needed, Sign Consultant should coordinate with the project team architect or structural engineer for bracing or backing details in order to submit appropriate mounting methods for approval by HCAI and the AHJ prior to fabrication and installation.

Fabrication and Installation Details

FD.72

Orientation Directory with Changeable Strips/Panel, Wall Mounted

- Sign consultant expected to identify potential installation conflicts—such as wall protection or architectural conditions—during the design process. If signs cannot be installed per typical mounting standards due to such conflicts, the sign consultant must coordinate with the FP&D Signage Program Representative and the project team. An appropriate alternative installation solution is to be proposed for review and approval prior to implementation.

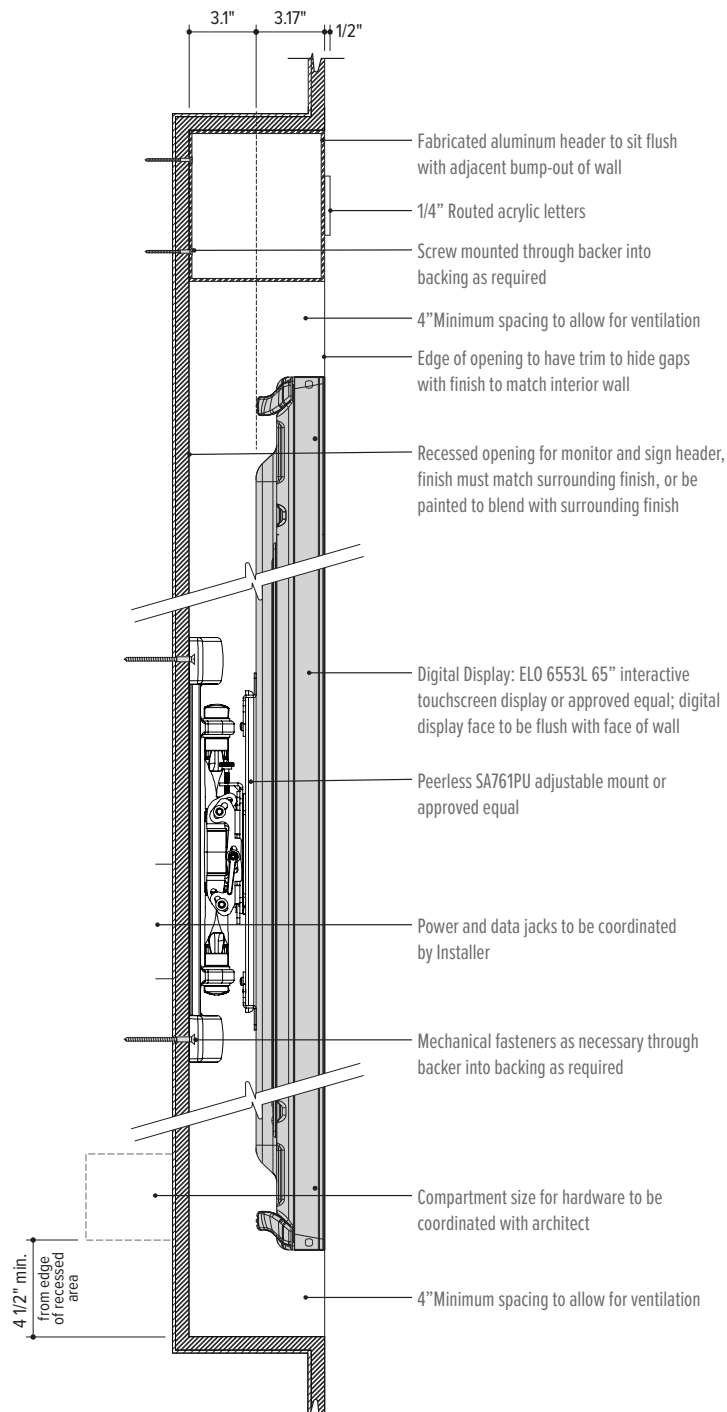


Note: Fabrication details shown are pre-approved by UC Davis Health. Any variance requests are to be provided as detail drawings to UC Davis Health for review and approval. The mounting methods shown on these pages have been developed for this sign program as a standard. Unique site conditions and local codes may require additional hardware or mounting fixtures not shown. In California Hospitals, HCAI requires that signs over 20 lbs. are attached to pre-installed bracing from the structure above for ceiling attached signs or wall backing for wall mounted signs. Sign Consultant should field verify sign locations and conditions or coordinate with the design team in order to evaluate the built conditions. If needed, Sign Consultant should coordinate with the project team architect or structural engineer for bracing or backing details in order to submit appropriate mounting methods for approval by HCAI and the AHJ prior to fabrication and installation.

Fabrication and Installation Details

FD.73

Orientation Directory with Integrated Digital

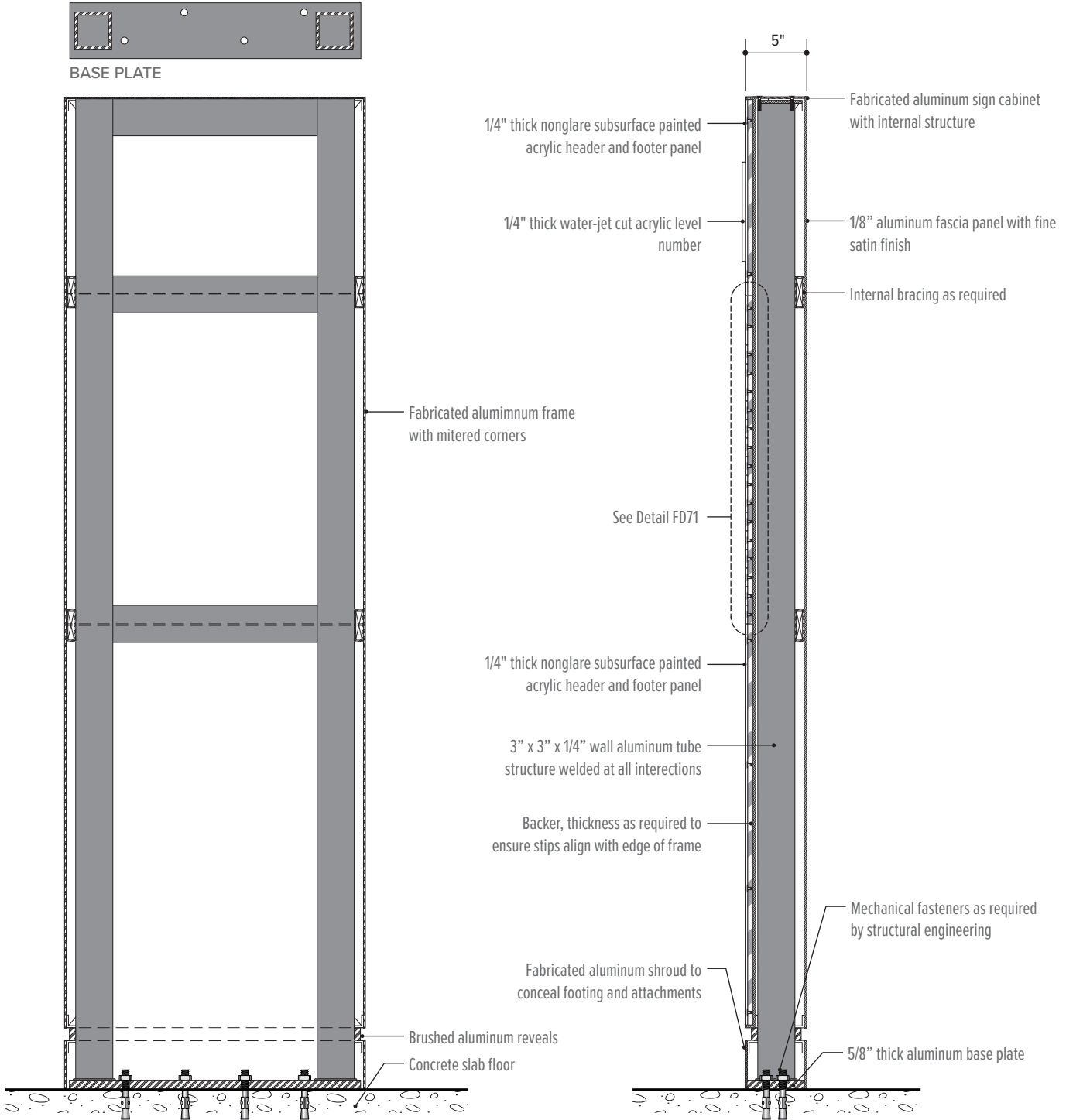


Note: Fabrication details shown are pre-approved by UC Davis Health. Any variance requests are to be provided as detail drawings to UC Davis Health for review and approval. The mounting methods shown on these pages have been developed for this sign program as a standard. Unique site conditions and local codes may require additional hardware or mounting fixtures not shown. In California Hospitals, HCAI requires that signs over 20 lbs. are attached to pre-installed bracing from the structure above for ceiling attached signs or wall backing for wall mounted signs. Sign Consultant should field verify sign locations and conditions or coordinate with the design team in order to evaluate the built conditions. If needed, Sign Consultant should coordinate with the project team architect or structural engineer for bracing or backing details in order to submit appropriate mounting methods for approval by HCAI and the AHJ prior to fabrication and installation.

Fabrication and Installation Details

FD.75

Lobby Directional, Freestanding



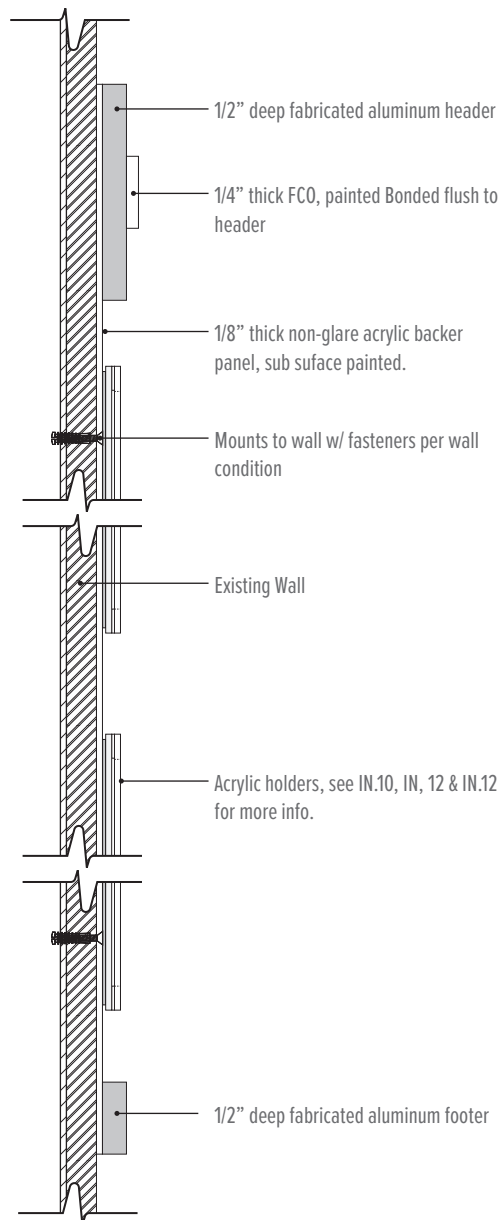
Note: Fabrication details shown are pre-approved by UC Davis Health. Any variance requests are to be provided as detail drawings to UC Davis Health for review and approval. The mounting methods shown on these pages have been developed for this sign program as a standard. Unique site conditions and local codes may require additional hardware or mounting fixtures not shown. In California Hospitals, HCAI requires that signs over 20 lbs. are attached to pre-installed bracing from the structure above for ceiling attached signs or wall backing for wall mounted signs. Sign Consultant should field verify sign locations and conditions or coordinate with the design team in order to evaluate the built conditions. If needed, Sign Consultant should coordinate with the project team architect or structural engineer for bracing or backing details in order to submit appropriate mounting methods for approval by HCAI and the AHJ prior to fabrication and installation.

Fabrication and Installation Details

FD.90

Mandated Posting, Wall Mounted

- Sign consultant expected to identify potential installation conflicts—such as wall protection or architectural conditions—during the design process. If signs cannot be installed per typical mounting standards due to such conflicts, the sign consultant must coordinate with the FP&D Signage Program Representative and the project team. An appropriate alternative installation solution is to be proposed for review and approval prior to implementation.

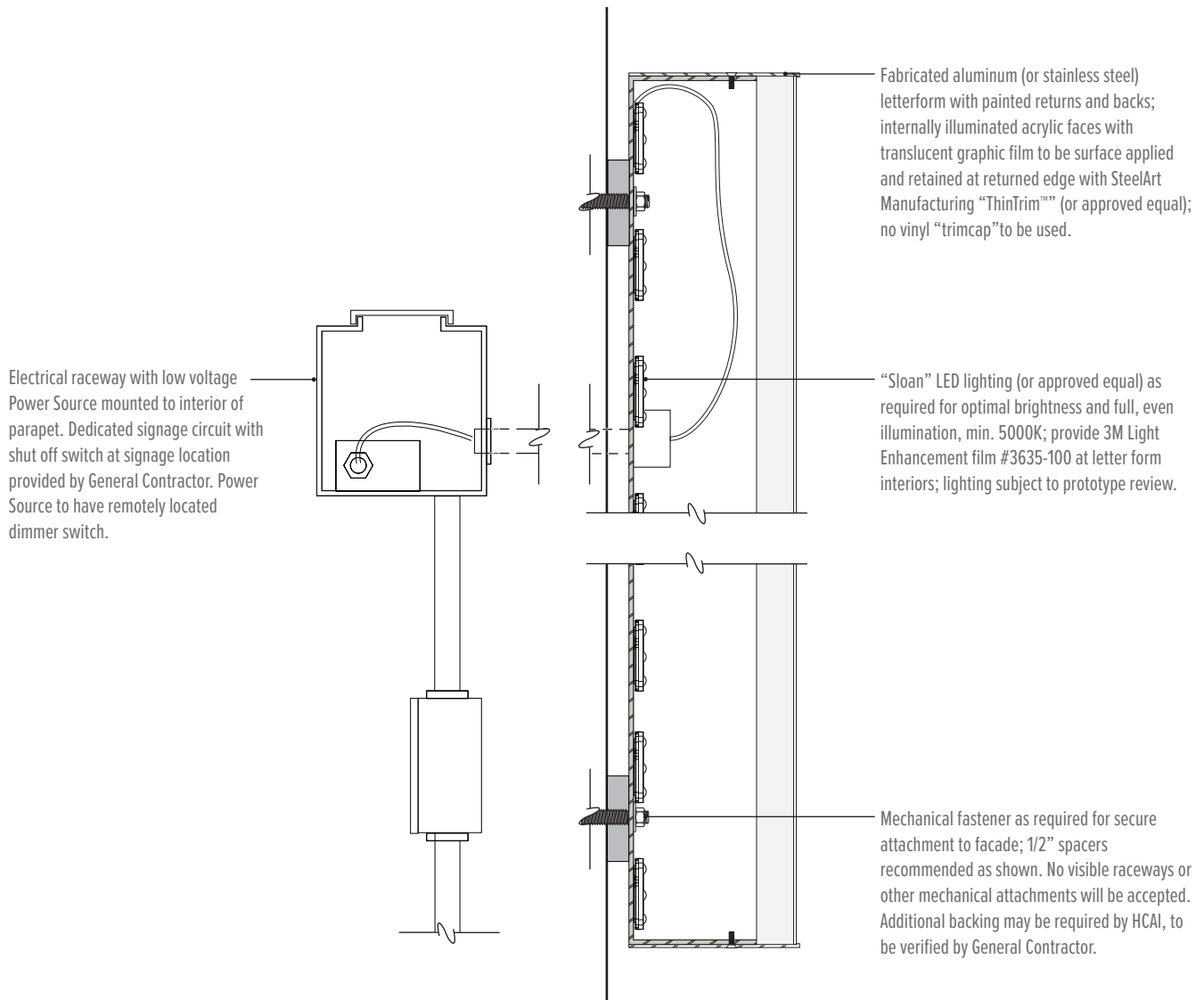


Note: Fabrication details shown are pre-approved by UC Davis Health. Any variance requests are to be provided as detail drawings to UC Davis Health for review and approval. The mounting methods shown on these pages have been developed for this sign program as a standard. Unique site conditions and local codes may require additional hardware or mounting fixtures not shown. In California Hospitals, HCAI requires that signs over 20 lbs. are attached to pre-installed bracing from the structure above for ceiling attached signs or wall backing for wall mounted signs. Sign Consultant should field verify sign locations and conditions or coordinate with the design team in order to evaluate the built conditions. If needed, Sign Consultant should coordinate with the project team architect or structural engineer for bracing or backing details in order to submit appropriate mounting methods for approval by HCAI and the AHJ prior to fabrication and installation.

Fabrication and Installation Details

FD.100.1

Face Illuminated Channel Letters

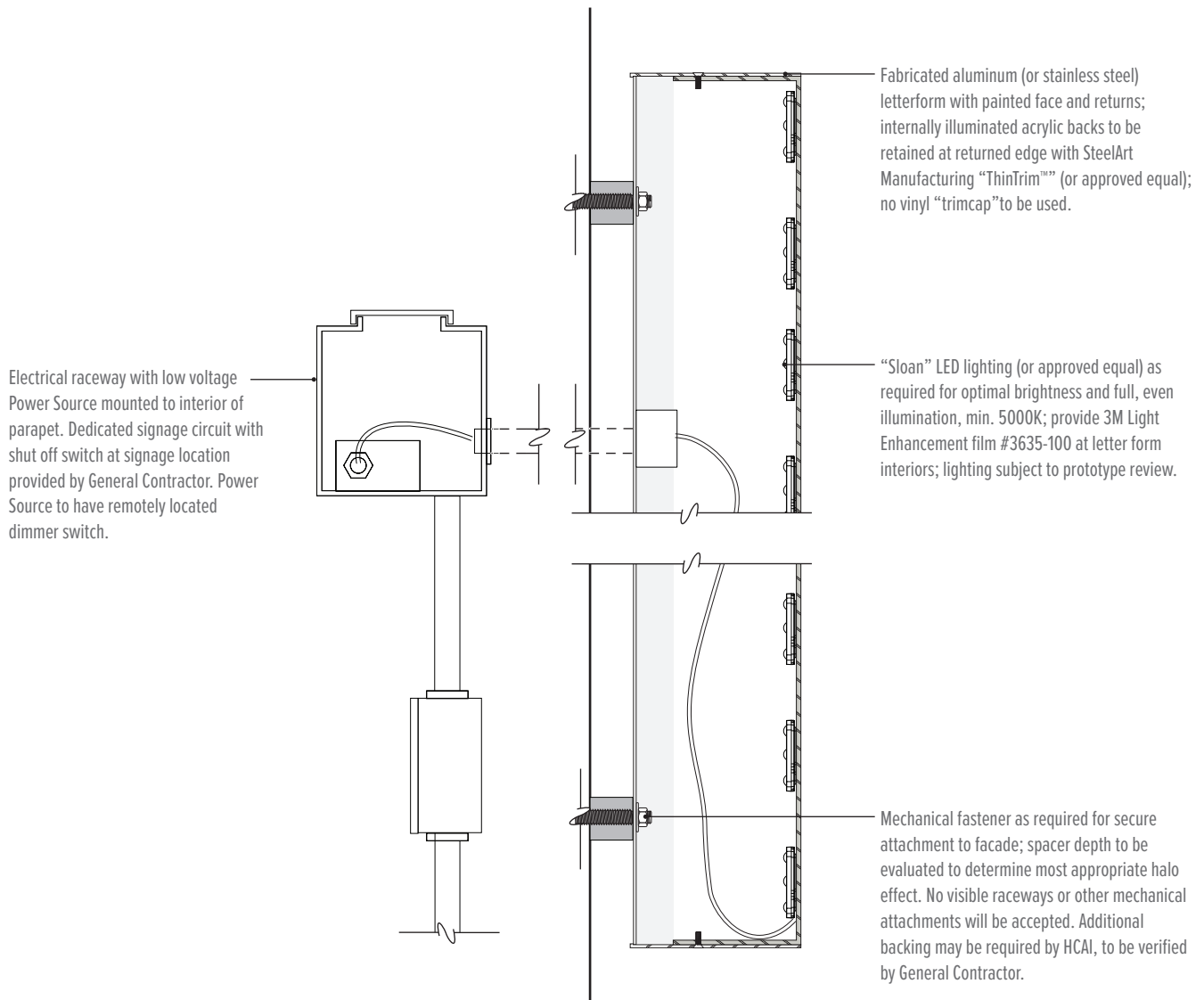


Note: Fabrication details shown are pre-approved by UC Davis Health. Any variance requests are to be provided as detail drawings to UC Davis Health for review and approval. The mounting methods shown on these pages have been developed for this sign program as a standard. Unique site conditions and local codes may require additional hardware or mounting fixtures not shown. In California Hospitals, HCAI requires that signs over 20 lbs. are attached to pre-installed bracing from the structure above for ceiling attached signs or wall backing for wall mounted signs. Sign Consultant should field verify sign locations and conditions or coordinate with the design team in order to evaluate the built conditions. If needed, Sign Consultant should coordinate with the project team architect or structural engineer for bracing or backing details in order to submit appropriate mounting methods for approval by HCAI and the AHJ prior to fabrication and installation.

Fabrication and Installation Details

FD.100.2

Halo Illuminated Channel Letters

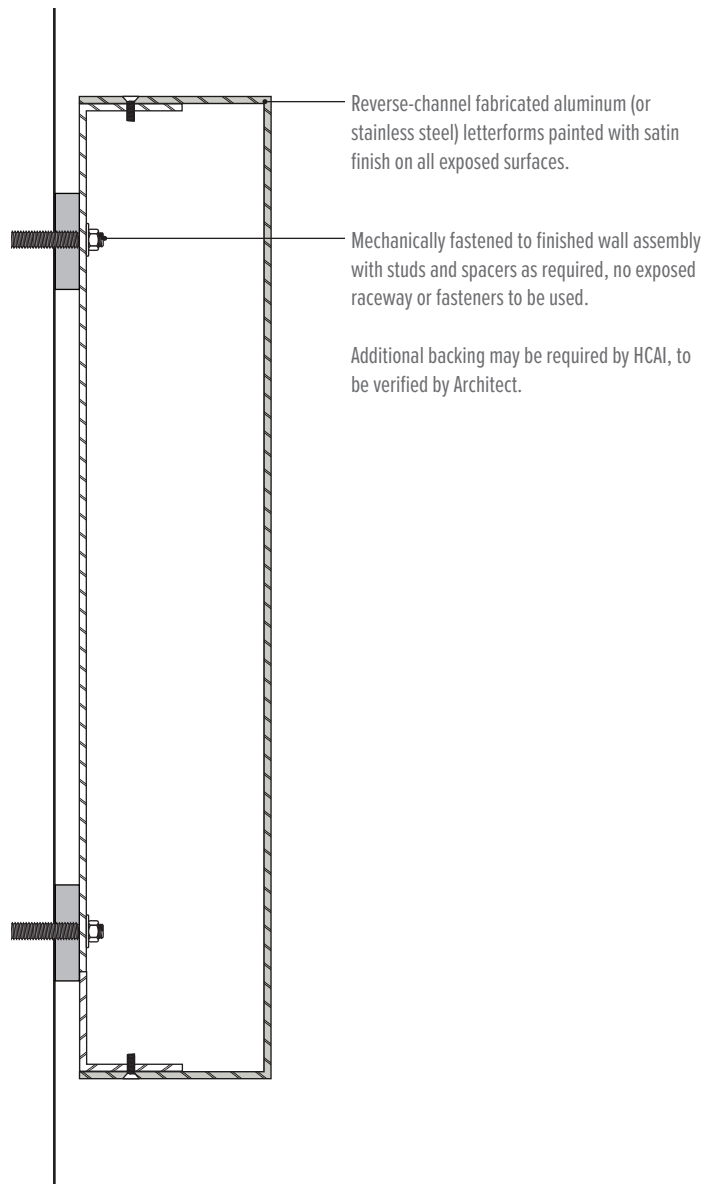


Note: Fabrication details shown are pre-approved by UC Davis Health. Any variance requests are to be provided as detail drawings to UC Davis Health for review and approval. The mounting methods shown on these pages have been developed for this sign program as a standard. Unique site conditions and local codes may require additional hardware or mounting fixtures not shown. In California Hospitals, HCAI requires that signs over 20 lbs. are attached to pre-installed bracing from the structure above for ceiling attached signs or wall backing for wall mounted signs. Sign Consultant should field verify sign locations and conditions or coordinate with the design team in order to evaluate the built conditions. If needed, Sign Consultant should coordinate with the project team architect or structural engineer for bracing or backing details in order to submit appropriate mounting methods for approval by HCAI and the AHJ prior to fabrication and installation.

Fabrication and Installation Details

FD.101

Non-Illuminated Channel Letters

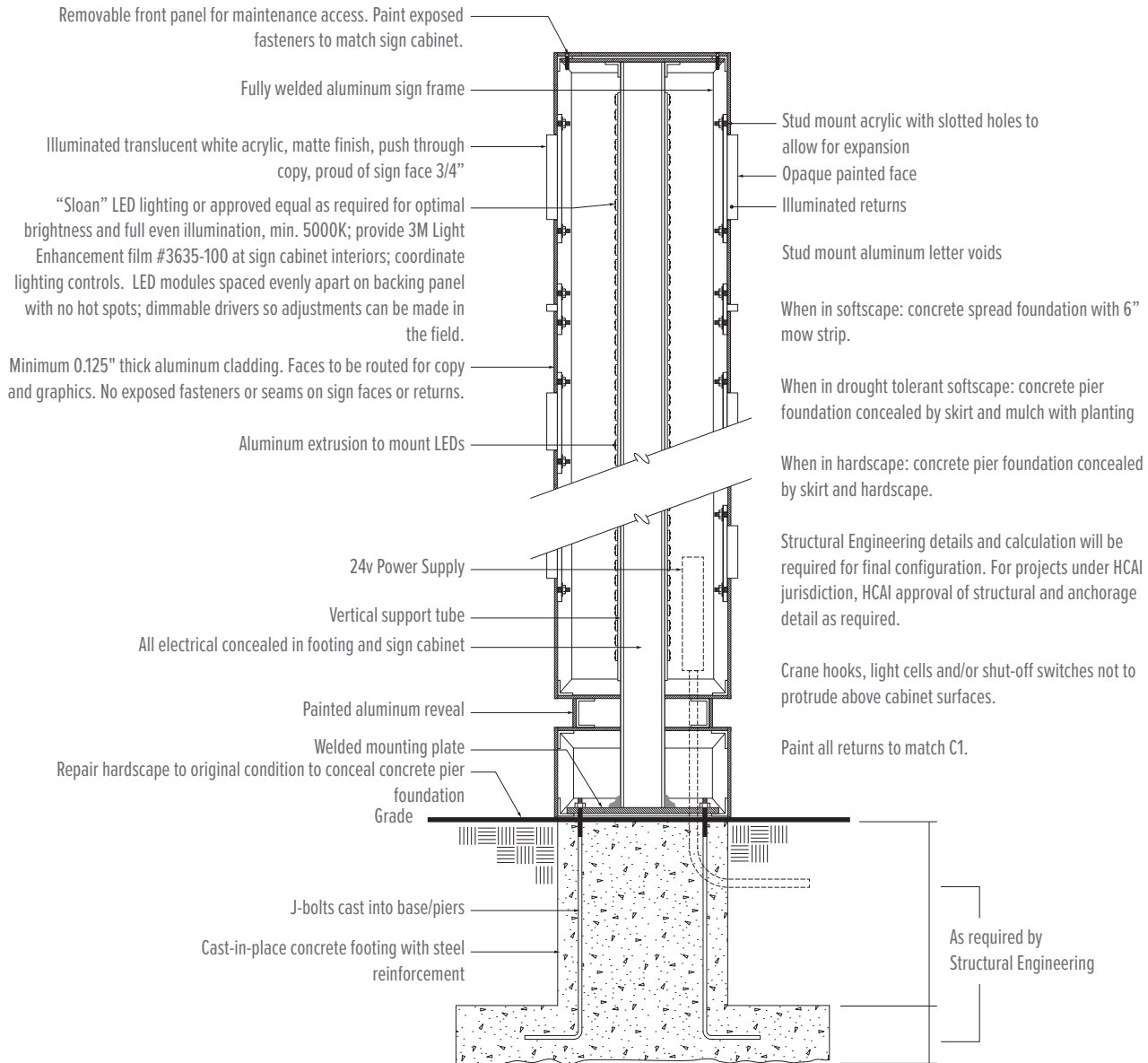


Note: Fabrication details shown are pre-approved by UC Davis Health. Any variance requests are to be provided as detail drawings to UC Davis Health for review and approval. The mounting methods shown on these pages have been developed for this sign program as a standard. Unique site conditions and local codes may require additional hardware or mounting fixtures not shown. In California Hospitals, HCAI requires that signs over 20 lbs. are attached to pre-installed bracing from the structure above for ceiling attached signs or wall backing for wall mounted signs. Sign Consultant should field verify sign locations and conditions or coordinate with the design team in order to evaluate the built conditions. If needed, Sign Consultant should coordinate with the project team architect or structural engineer for bracing or backing details in order to submit appropriate mounting methods for approval by HCAI and the AHJ prior to fabrication and installation.

Fabrication and Installation Details

FD.110

Monument

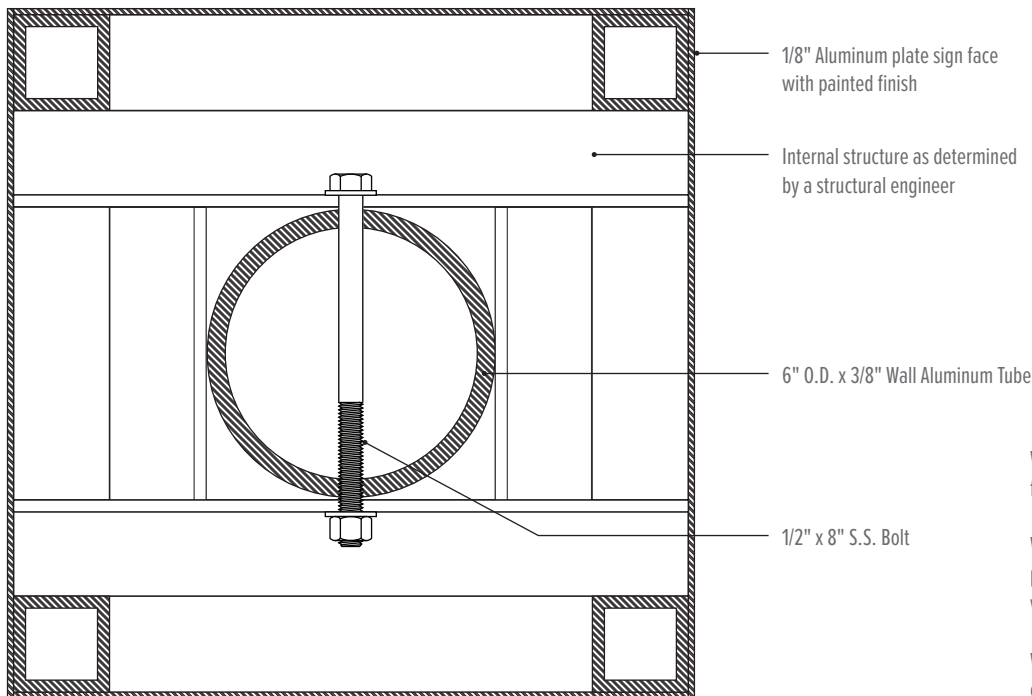


Note: Fabrication details shown are pre-approved by UC Davis Health. Any variance requests are to be provided as detail drawings to UC Davis Health for review and approval. The mounting methods shown on these pages have been developed for this sign program as a standard. Unique site conditions and local codes may require additional hardware or mounting fixtures not shown. In California Hospitals, HCAI requires that signs over 20 lbs. are attached to pre-installed bracing from the structure above for ceiling attached signs or wall backing for wall mounted signs. Sign Consultant should field verify sign locations and conditions or coordinate with the design team in order to evaluate the built conditions. If needed, Sign Consultant should coordinate with the project team architect or structural engineer for bracing or backing details in order to submit appropriate mounting methods for approval by HCAI and the AHJ prior to fabrication and installation.

Fabrication and Installation Details

FD.120

Non-Illuminated Pylon



When in softscape: concrete spread foundation with 6" mow strip.

When in drought tolerant softscape: concrete pier foundation concealed by skirt and mulch with planting

When in hardscape: concrete pier foundation concealed by skirt and hardscape.

Structural Engineering details and calculation will be required for final configuration. For projects under HCAI jurisdiction, HCAI approval of structural and anchorage detail as required.

Crane hooks, light cells and/or shut-off switches not to protrude above cabinet surfaces.

Paint all returns to match C1.

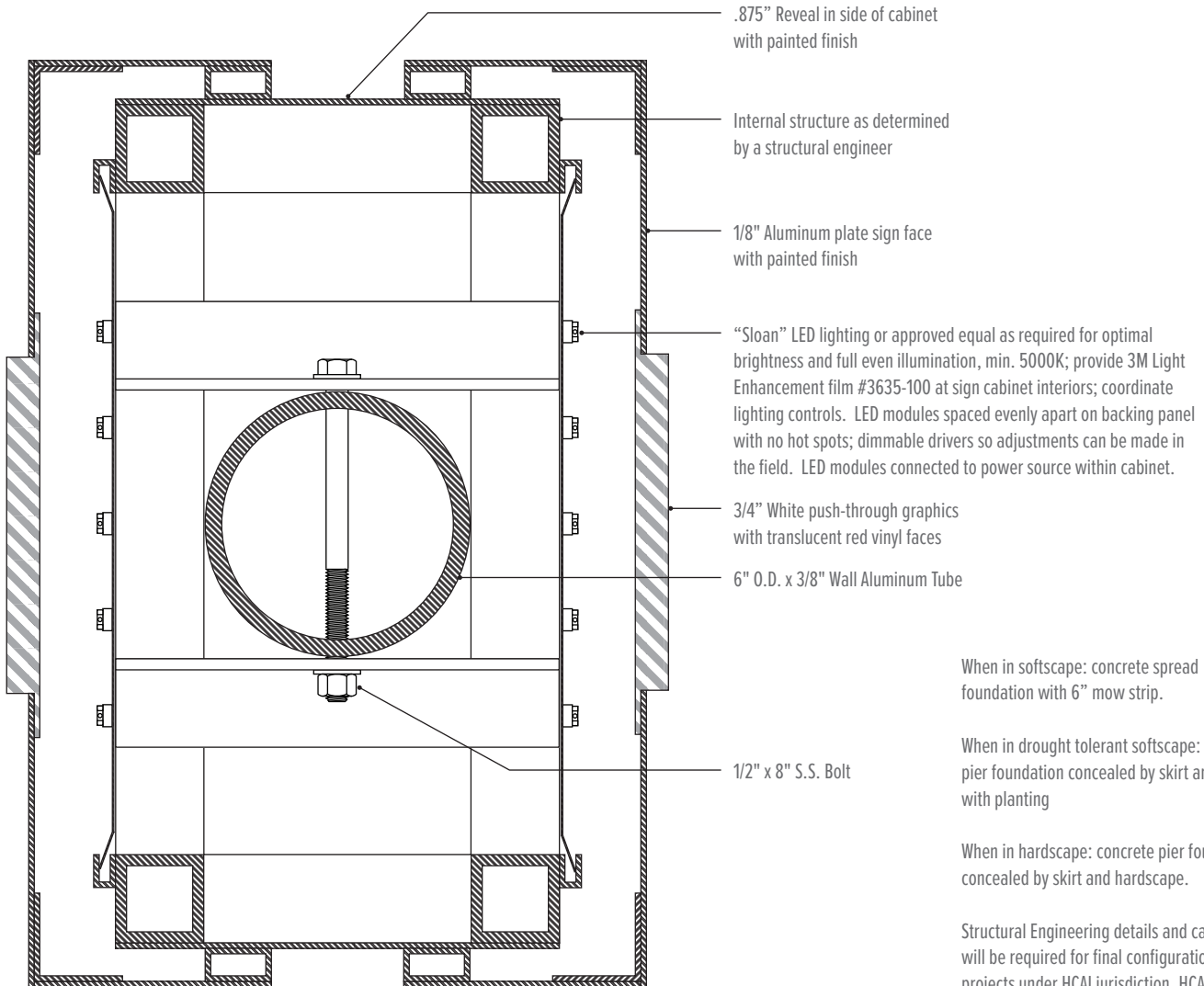
Plan Section at Sign Cabinet

Note: Fabrication details shown are pre-approved by UC Davis Health. Any variance requests are to be provided as detail drawings to UC Davis Health for review and approval. The mounting methods shown on these pages have been developed for this sign program as a standard. Unique site conditions and local codes may require additional hardware or mounting fixtures not shown. In California Hospitals, HCAI requires that signs over 20 lbs. are attached to pre-installed bracing from the structure above for ceiling attached signs or wall backing for wall mounted signs. Sign Consultant should field verify sign locations and conditions or coordinate with the design team in order to evaluate the built conditions. If needed, Sign Consultant should coordinate with the project team architect or structural engineer for bracing or backing details in order to submit appropriate mounting methods for approval by HCAI and the AHJ prior to fabrication and installation.

Fabrication and Installation Details

FD.125

Illuminated Pylon



Plan Section at Sign Cabinet

When in softscape: concrete spread foundation with 6" mow strip.

When in drought tolerant softscape: concrete pier foundation concealed by skirt and mulch with planting

When in hardscape: concrete pier foundation concealed by skirt and hardscape.

Structural Engineering details and calculation will be required for final configuration. For projects under HCAI jurisdiction, HCAI approval of structural and anchorage detail as required.

Crane hooks, light cells and/or shut-off switches not to protrude above cabinet surfaces.

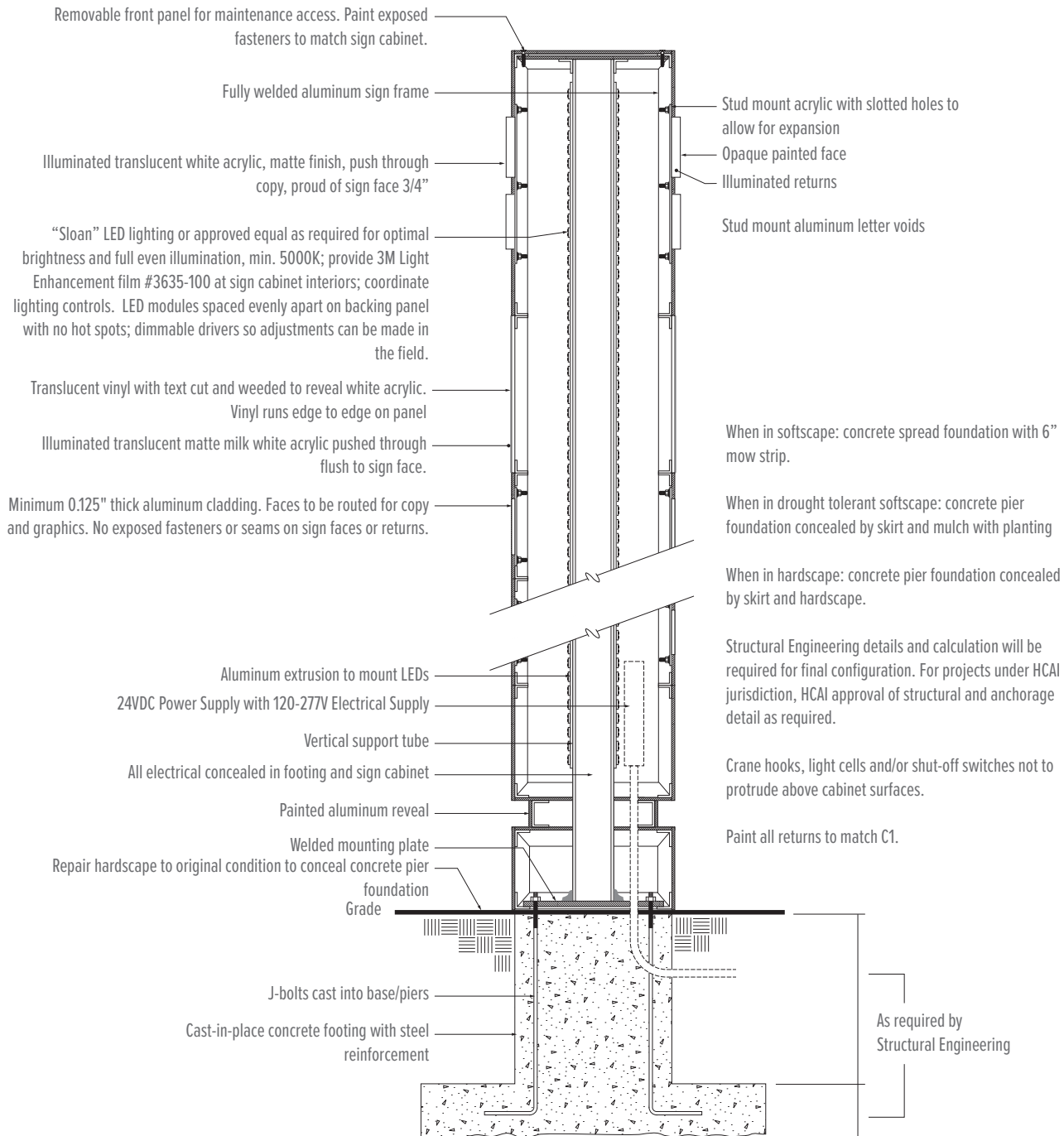
Paint all returns to match C1.

Note: Fabrication details shown are pre-approved by UC Davis Health. Any variance requests are to be provided as detail drawings to UC Davis Health for review and approval. The mounting methods shown on these pages have been developed for this sign program as a standard. Unique site conditions and local codes may require additional hardware or mounting fixtures not shown. In California Hospitals, HCAI requires that signs over 20 lbs. are attached to pre-installed bracing from the structure above for ceiling attached signs or wall backing for wall mounted signs. Sign Consultant should field verify sign locations and conditions or coordinate with the design team in order to evaluate the built conditions. If needed, Sign Consultant should coordinate with the project team architect or structural engineer for bracing or backing details in order to submit appropriate mounting methods for approval by HCAI and the AHJ prior to fabrication and installation.

Fabrication and Installation Details

FD.130

Vehicular Directional with Removable Slats

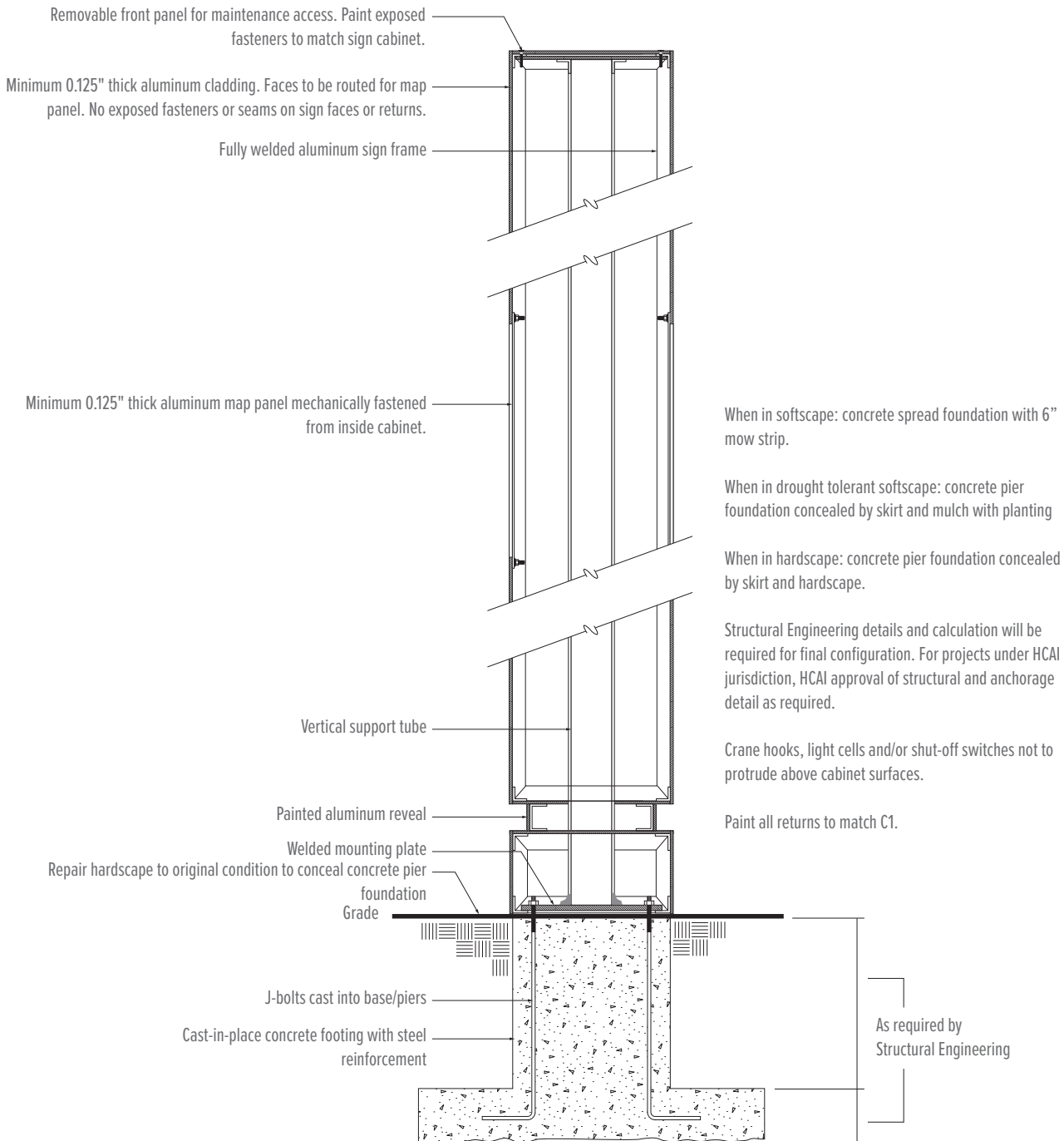


Note: Fabrication details shown are pre-approved by UC Davis Health. Any variance requests are to be provided as detail drawings to UC Davis Health for review and approval. The mounting methods shown on these pages have been developed for this sign program as a standard. Unique site conditions and local codes may require additional hardware or mounting fixtures not shown. In California Hospitals, HCAI requires that signs over 20 lbs. are attached to pre-installed bracing from the structure above for ceiling attached signs or wall backing for wall mounted signs. Sign Consultant should field verify sign locations and conditions or coordinate with the design team in order to evaluate the built conditions. If needed, Sign Consultant should coordinate with the project team architect or structural engineer for bracing or backing details in order to submit appropriate mounting methods for approval by HCAI and the AHJ prior to fabrication and installation.

Fabrication and Installation Details

FD.135

Pedestrian Orientation

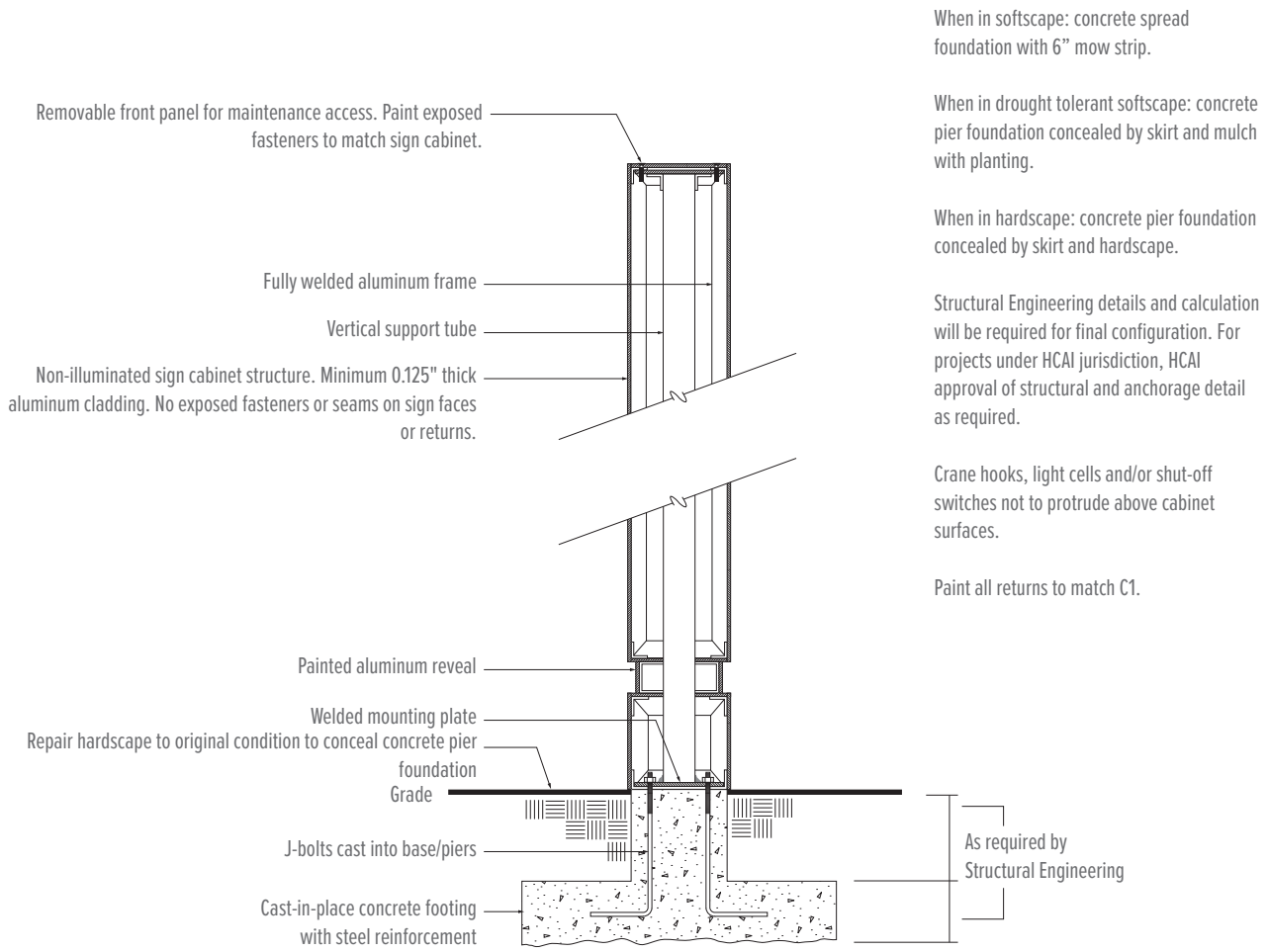


Note: Fabrication details shown are pre-approved by UC Davis Health. Any variance requests are to be provided as detail drawings to UC Davis Health for review and approval. The mounting methods shown on these pages have been developed for this sign program as a standard. Unique site conditions and local codes may require additional hardware or mounting fixtures not shown. In California Hospitals, HCAI requires that signs over 20 lbs. are attached to pre-installed bracing from the structure above for ceiling attached signs or wall backing for wall mounted signs. Sign Consultant should field verify sign locations and conditions or coordinate with the design team in order to evaluate the built conditions. If needed, Sign Consultant should coordinate with the project team architect or structural engineer for bracing or backing details in order to submit appropriate mounting methods for approval by HCAI and the AHJ prior to fabrication and installation.

Fabrication and Installation Details

FD.136

Pedestrian Directional

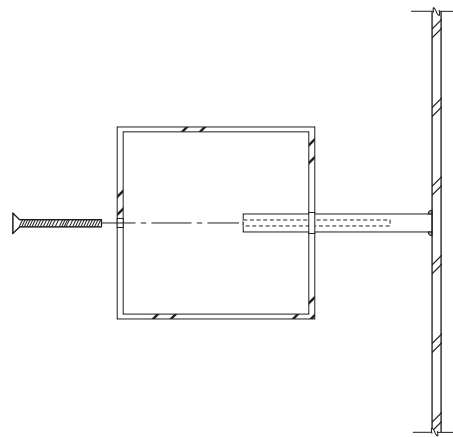


Note: Fabrication details shown are pre-approved by UC Davis Health. Any variance requests are to be provided as detail drawings to UC Davis Health for review and approval. The mounting methods shown on these pages have been developed for this sign program as a standard. Unique site conditions and local codes may require additional hardware or mounting fixtures not shown. In California Hospitals, HCAI requires that signs over 20 lbs. are attached to pre-installed bracing from the structure above for ceiling attached signs or wall backing for wall mounted signs. Sign Consultant should field verify sign locations and conditions or coordinate with the design team in order to evaluate the built conditions. If needed, Sign Consultant should coordinate with the project team architect or structural engineer for bracing or backing details in order to submit appropriate mounting methods for approval by HCAI and the AHJ prior to fabrication and installation.

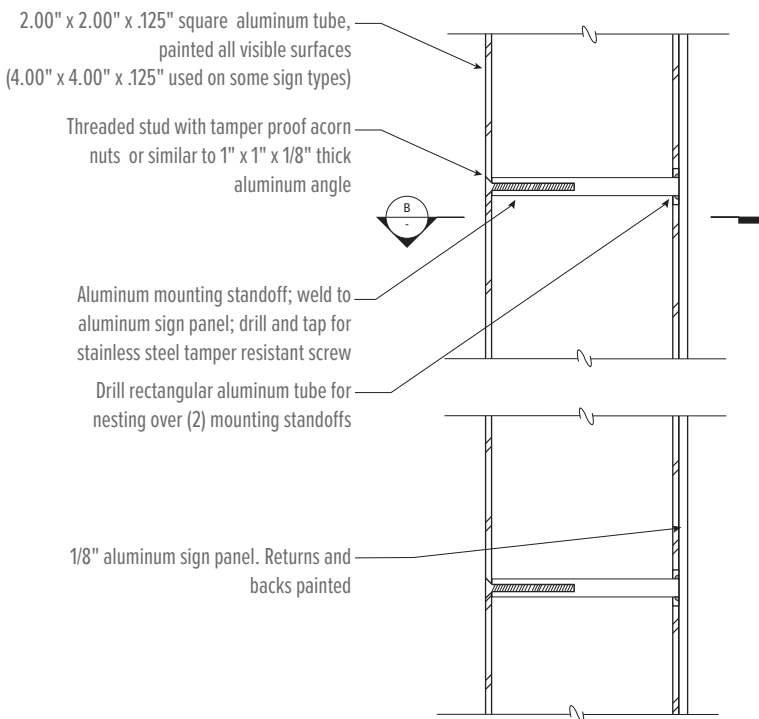
Fabrication and Installation Details

FD.140

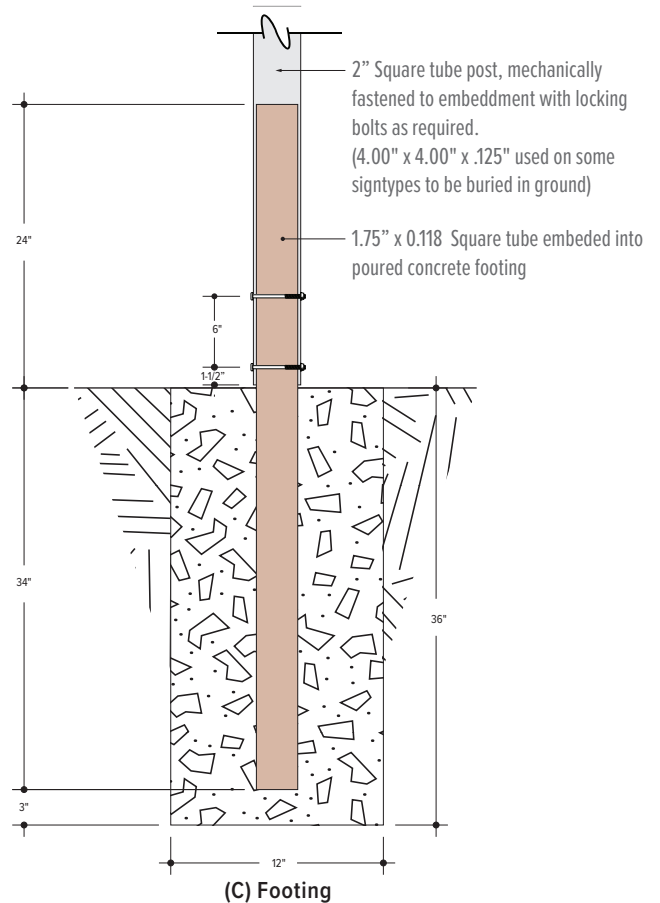
Single Post Mounted



(B) Vertical Section



(A) Horizontal Section



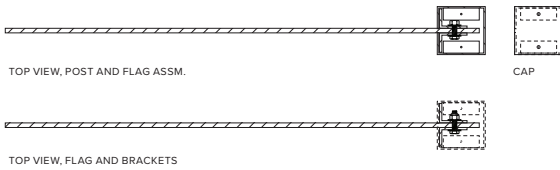
(C) Footing

Note: Fabrication details shown are pre-approved by UC Davis Health. Any variance requests are to be provided as detail drawings to UC Davis Health for review and approval. The mounting methods shown on these pages have been developed for this sign program as a standard. Unique site conditions and local codes may require additional hardware or mounting fixtures not shown. In California Hospitals, HCAI requires that signs over 20 lbs. are attached to pre-installed bracing from the structure above for ceiling attached signs or wall backing for wall mounted signs. Sign Consultant should field verify sign locations and conditions or coordinate with the design team in order to evaluate the built conditions. If needed, Sign Consultant should coordinate with the project team architect or structural engineer for bracing or backing details in order to submit appropriate mounting methods for approval by HCAI and the AHJ prior to fabrication and installation.

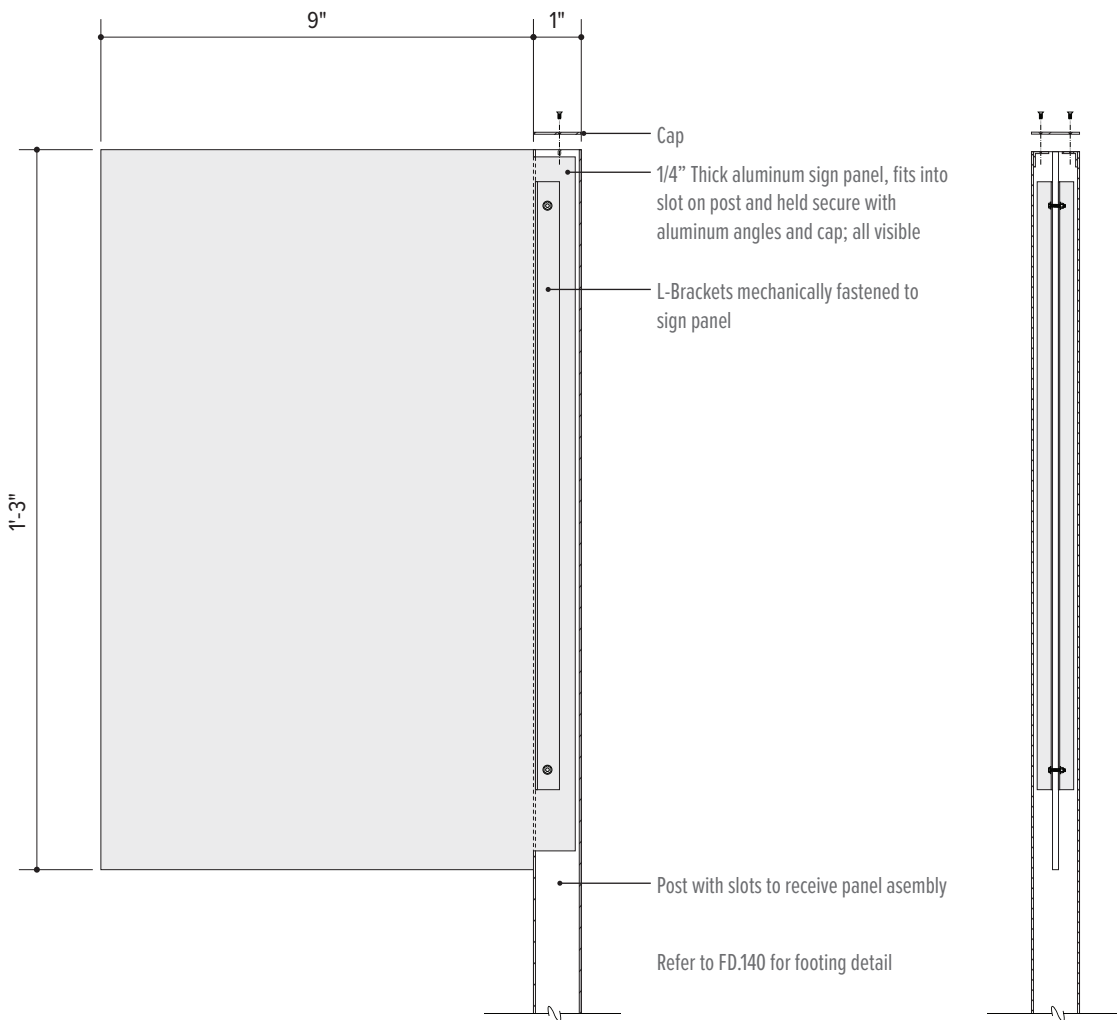
Fabrication and Installation Details

FD.141

Single Post Flag Mounted



(C) Top Section

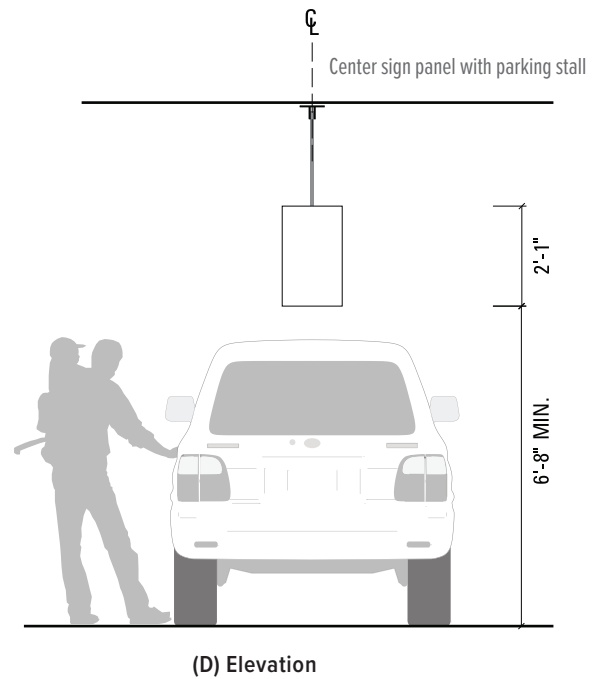
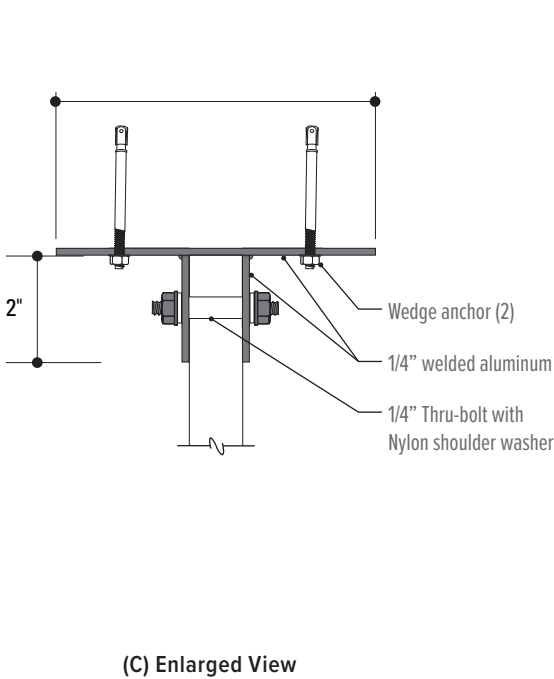


Note: Fabrication details shown are pre-approved by UC Davis Health. Any variance requests are to be provided as detail drawings to UC Davis Health for review and approval. The mounting methods shown on these pages have been developed for this sign program as a standard. Unique site conditions and local codes may require additional hardware or mounting fixtures not shown. In California Hospitals, HCAI requires that signs over 20 lbs. are attached to pre-installed bracing from the structure above for ceiling attached signs or wall backing for wall mounted signs. Sign Consultant should field verify sign locations and conditions or coordinate with the design team in order to evaluate the built conditions. If needed, Sign Consultant should coordinate with the project team architect or structural engineer for bracing or backing details in order to submit appropriate mounting methods for approval by HCAI and the AHJ prior to fabrication and installation.

Fabrication and Installation Details

FD.142

Single Post, Ceiling Mounted

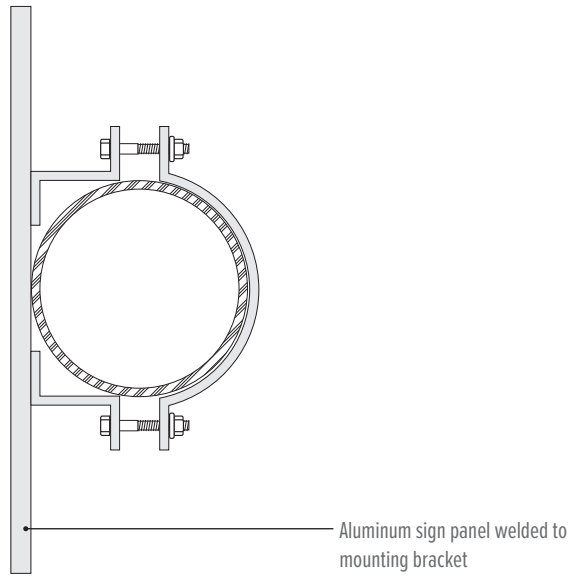


Note: Fabrication details shown are pre-approved by UC Davis Health. Any variance requests are to be provided as detail drawings to UC Davis Health for review and approval. The mounting methods shown on these pages have been developed for this sign program as a standard. Unique site conditions and local codes may require additional hardware or mounting fixtures not shown. In California Hospitals, HCAI requires that signs over 20 lbs. are attached to pre-installed bracing from the structure above for ceiling attached signs or wall backing for wall mounted signs. Sign Consultant should field verify sign locations and conditions or coordinate with the design team in order to evaluate the built conditions. If needed, Sign Consultant should coordinate with the project team architect or structural engineer for bracing or backing details in order to submit appropriate mounting methods for approval by HCAI and the AHJ prior to fabrication and installation.

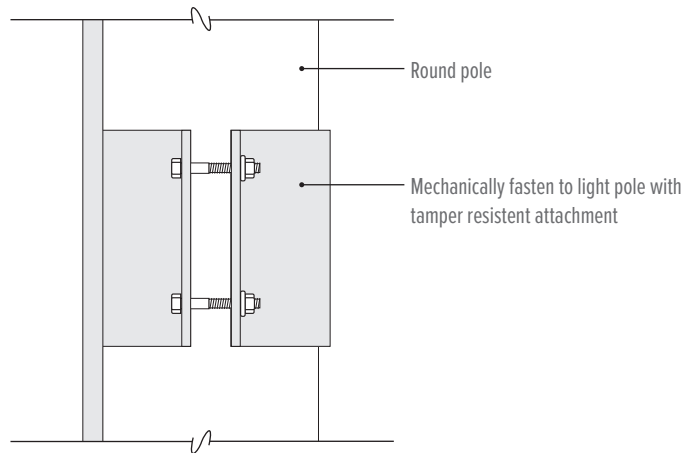
Fabrication and Installation Details

FD.143

Round Pole Mounted



(B) Top View



(A) Side View

Note: Fabrication details shown are pre-approved by UC Davis Health. Any variance requests are to be provided as detail drawings to UC Davis Health for review and approval. The mounting methods shown on these pages have been developed for this sign program as a standard. Unique site conditions and local codes may require additional hardware or mounting fixtures not shown. In California Hospitals, HCAI requires that signs over 20 lbs. are attached to pre-installed bracing from the structure above for ceiling attached signs or wall backing for wall mounted signs. Sign Consultant should field verify sign locations and conditions or coordinate with the design team in order to evaluate the built conditions. If needed, Sign Consultant should coordinate with the project team architect or structural engineer for bracing or backing details in order to submit appropriate mounting methods for approval by HCAI and the AHJ prior to fabrication and installation.

Fabrication and Installation Details

FD.144

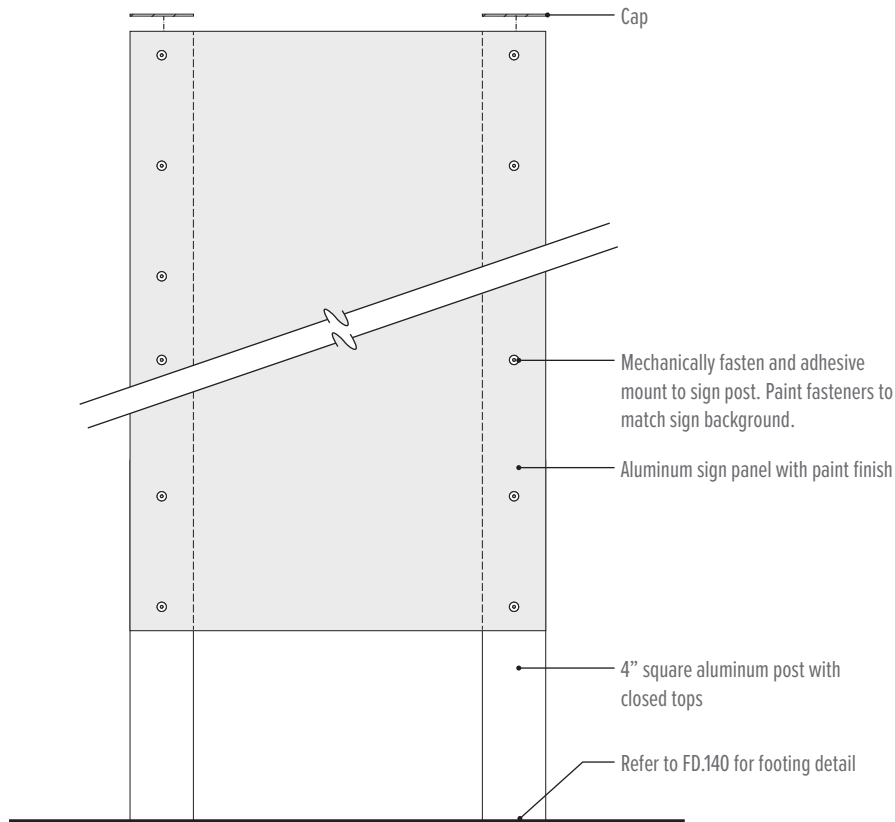
Freestanding Temporary Sign



(C) Top Section - Single Sided



(B) Top Section - Double Sided



(A) Front Section

Note: Fabrication details shown are pre-approved by UC Davis Health. Any variance requests are to be provided as detail drawings to UC Davis Health for review and approval. The mounting methods shown on these pages have been developed for this sign program as a standard. Unique site conditions and local codes may require additional hardware or mounting fixtures not shown. In California Hospitals, HCAI requires that signs over 20 lbs. are attached to pre-installed bracing from the structure above for ceiling attached signs or wall backing for wall mounted signs. Sign Consultant should field verify sign locations and conditions or coordinate with the design team in order to evaluate the built conditions. If needed, Sign Consultant should coordinate with the project team architect or structural engineer for bracing or backing details in order to submit appropriate mounting methods for approval by HCAI and the AHJ prior to fabrication and installation.

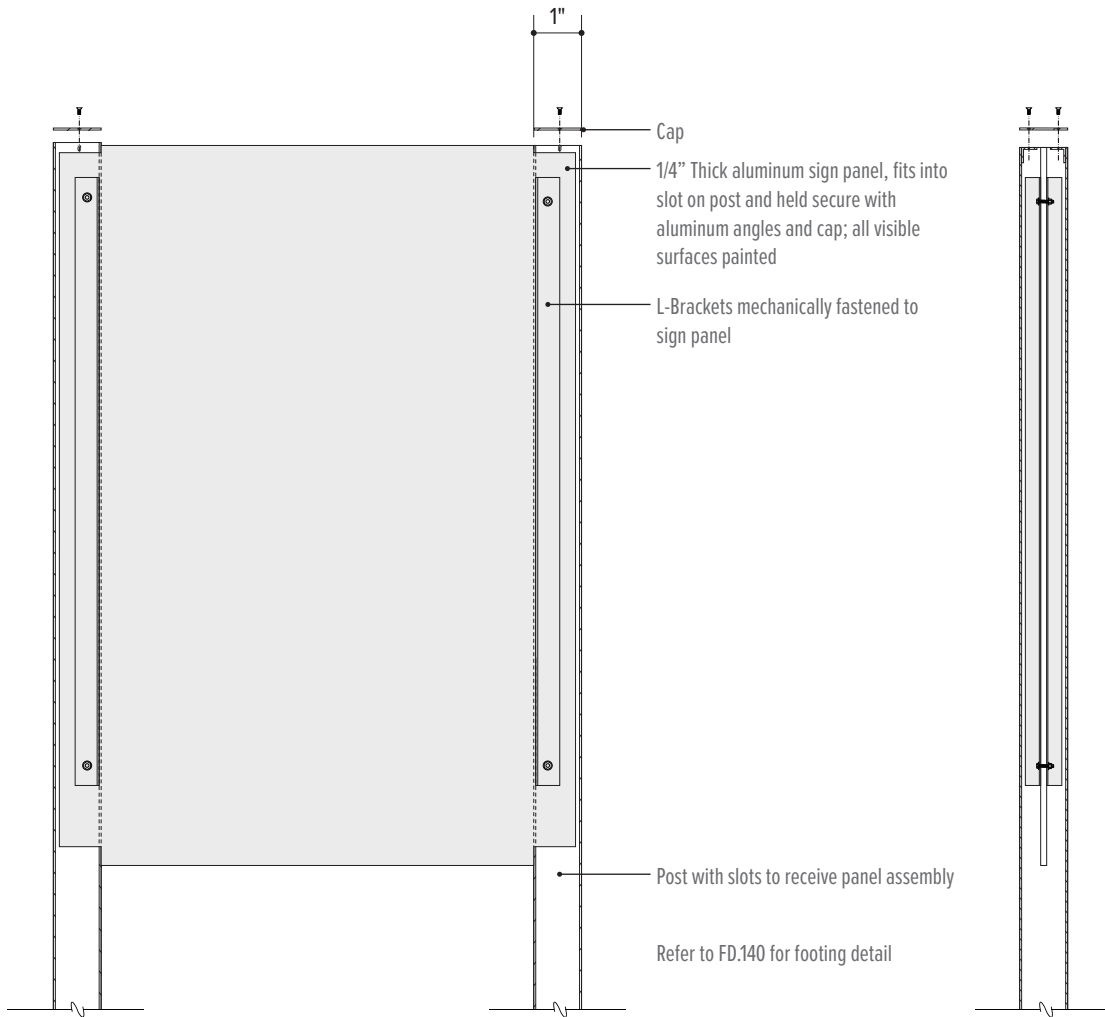
Fabrication and Installation Details

FD.145

Double Post Mounted



(C) Top Section



(A) Front Section

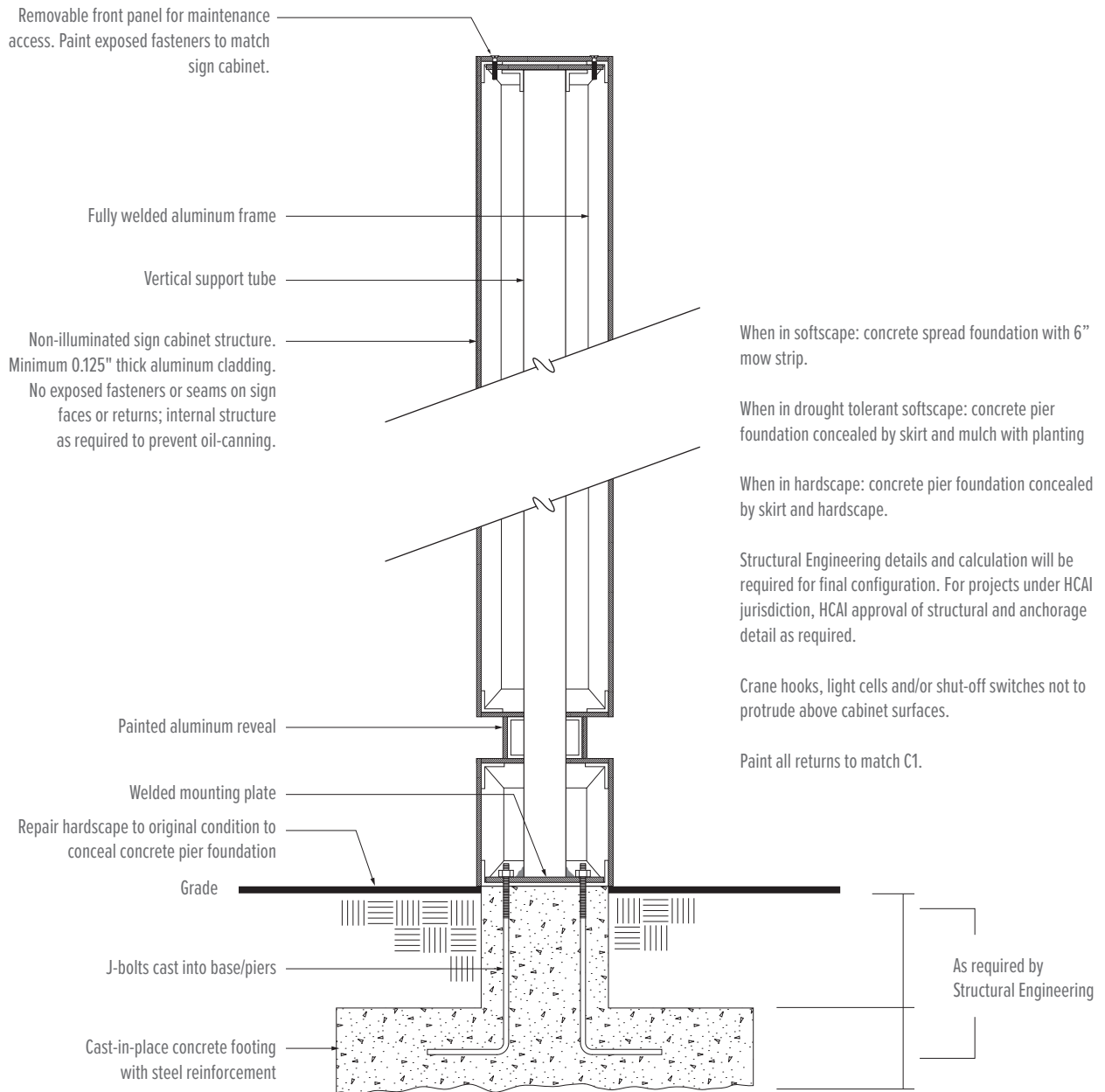
(B) Side Section

Note: Fabrication details shown are pre-approved by UC Davis Health. Any variance requests are to be provided as detail drawings to UC Davis Health for review and approval. The mounting methods shown on these pages have been developed for this sign program as a standard. Unique site conditions and local codes may require additional hardware or mounting fixtures not shown. In California Hospitals, HCAI requires that signs over 20 lbs. are attached to pre-installed bracing from the structure above for ceiling attached signs or wall backing for wall mounted signs. Sign Consultant should field verify sign locations and conditions or coordinate with the design team in order to evaluate the built conditions. If needed, Sign Consultant should coordinate with the project team architect or structural engineer for bracing or backing details in order to submit appropriate mounting methods for approval by HCAI and the AHJ prior to fabrication and installation.

Fabrication and Installation Details

FD.150

Parking Monument, Static

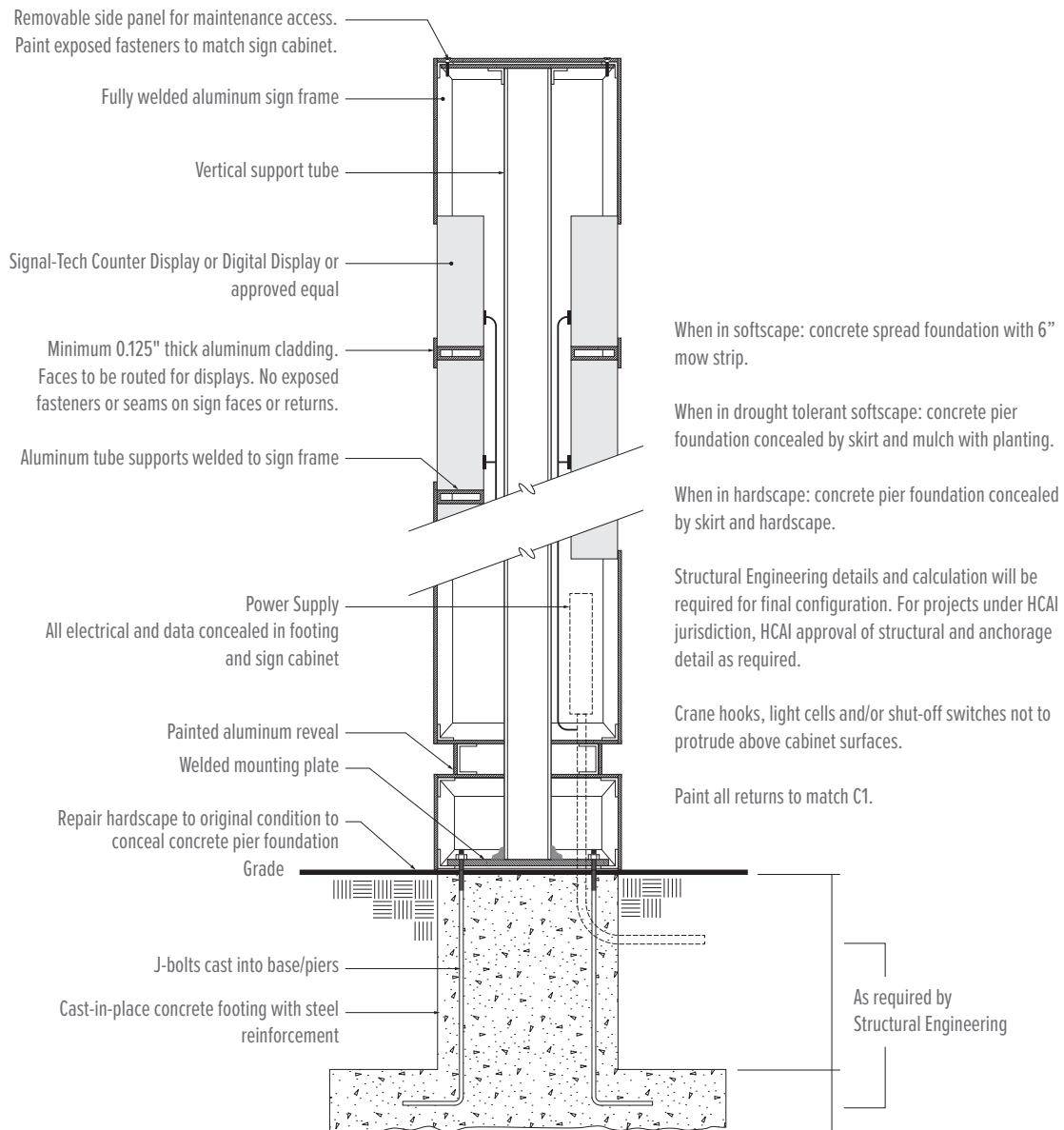


Note: Fabrication details shown are pre-approved by UC Davis Health. Any variance requests are to be provided as detail drawings to UC Davis Health for review and approval. The mounting methods shown on these pages have been developed for this sign program as a standard. Unique site conditions and local codes may require additional hardware or mounting fixtures not shown. In California Hospitals, HCAI requires that signs over 20 lbs. are attached to pre-installed bracing from the structure above for ceiling attached signs or wall backing for wall mounted signs. Sign Consultant should field verify sign locations and conditions or coordinate with the design team in order to evaluate the built conditions. If needed, Sign Consultant should coordinate with the project team architect or structural engineer for bracing or backing details in order to submit appropriate mounting methods for approval by HCAI and the AHJ prior to fabrication and installation.

Fabrication and Installation Details

FD.151

Parking Monument, Digital Freestanding

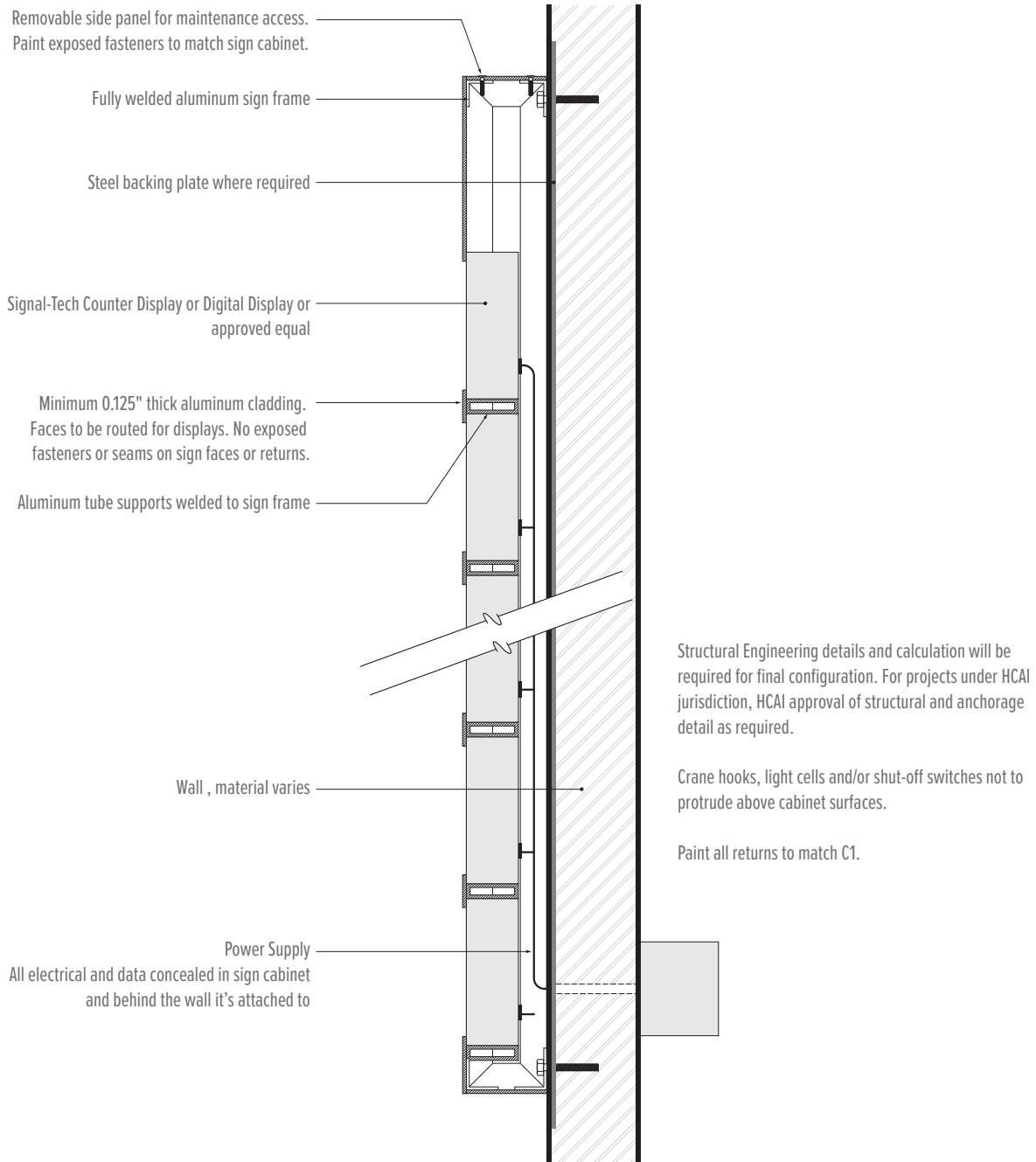


Note: Fabrication details shown are pre-approved by UC Davis Health. Any variance requests are to be provided as detail drawings to UC Davis Health for review and approval. The mounting methods shown on these pages have been developed for this sign program as a standard. Unique site conditions and local codes may require additional hardware or mounting fixtures not shown. In California Hospitals, HCAI requires that signs over 20 lbs. are attached to pre-installed bracing from the structure above for ceiling attached signs or wall backing for wall mounted signs. Sign Consultant should field verify sign locations and conditions or coordinate with the design team in order to evaluate the built conditions. If needed, Sign Consultant should coordinate with the project team architect or structural engineer for bracing or backing details in order to submit appropriate mounting methods for approval by HCAI and the AHJ prior to fabrication and installation.

Fabrication and Installation Details

FD.152

Parking Monument, Digital Wall Mounted

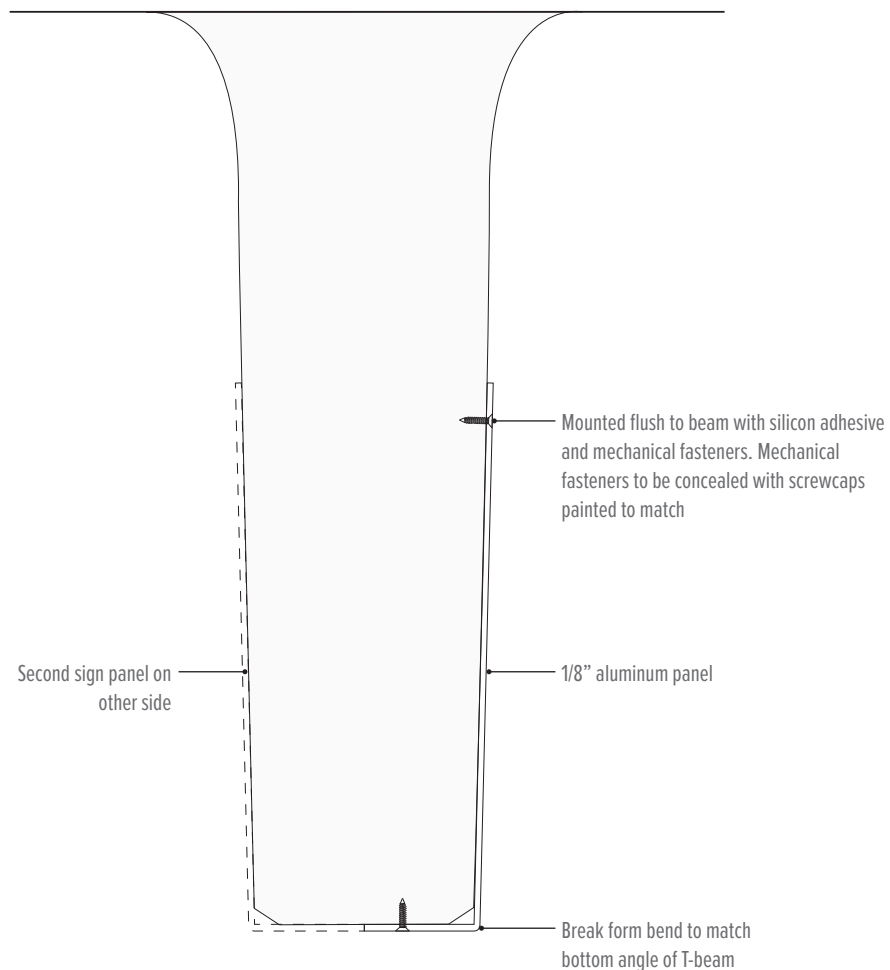


Note: Fabrication details shown are pre-approved by UC Davis Health. Any variance requests are to be provided as detail drawings to UC Davis Health for review and approval. The mounting methods shown on these pages have been developed for this sign program as a standard. Unique site conditions and local codes may require additional hardware or mounting fixtures not shown. In California Hospitals, HCAI requires that signs over 20 lbs. are attached to pre-installed bracing from the structure above for ceiling attached signs or wall backing for wall mounted signs. Sign Consultant should field verify sign locations and conditions or coordinate with the design team in order to evaluate the built conditions. If needed, Sign Consultant should coordinate with the project team architect or structural engineer for bracing or backing details in order to submit appropriate mounting methods for approval by HCAI and the AHJ prior to fabrication and installation.

Fabrication and Installation Details

FD.160

L Panel, Wall Mounted

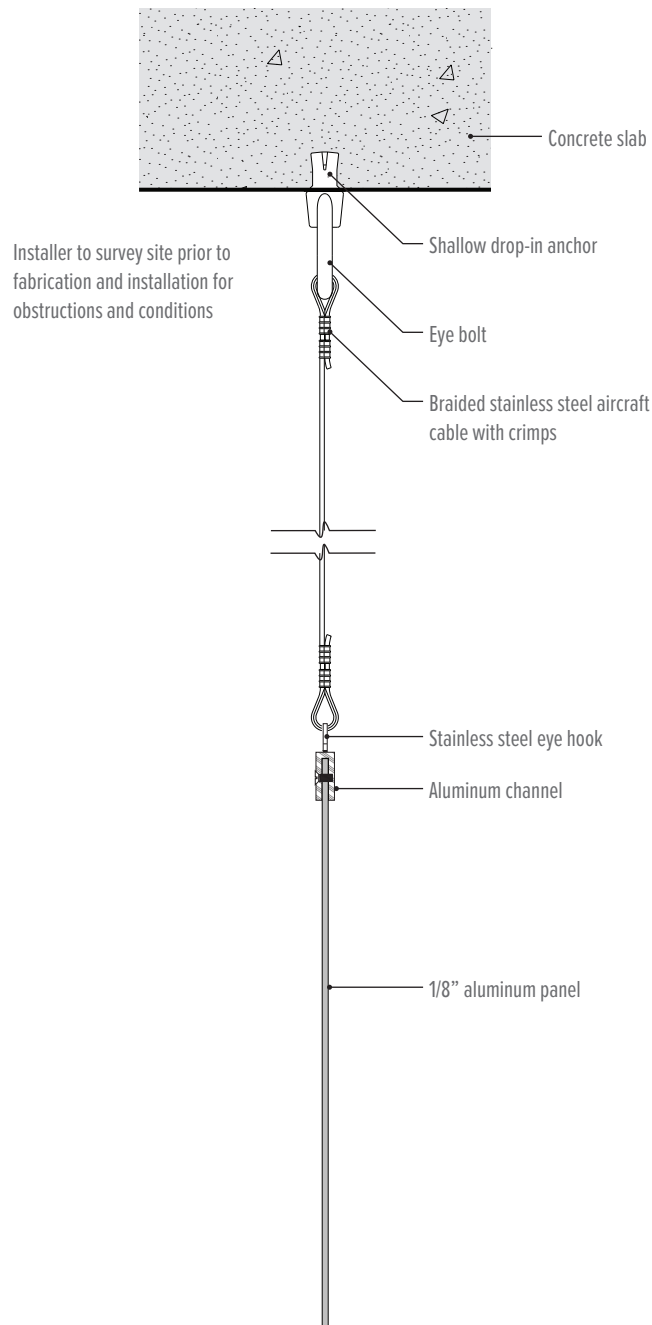


Note: Fabrication details shown are pre-approved by UC Davis Health. Any variance requests are to be provided as detail drawings to UC Davis Health for review and approval. The mounting methods shown on these pages have been developed for this sign program as a standard. Unique site conditions and local codes may require additional hardware or mounting fixtures not shown. In California Hospitals, HCAI requires that signs over 20 lbs. are attached to pre-installed bracing from the structure above for ceiling attached signs or wall backing for wall mounted signs. Sign Consultant should field verify sign locations and conditions or coordinate with the design team in order to evaluate the built conditions. If needed, Sign Consultant should coordinate with the project team architect or structural engineer for bracing or backing details in order to submit appropriate mounting methods for approval by HCAI and the AHJ prior to fabrication and installation.

Fabrication and Installation Details

FD.165

Parking Suspended



Note: Fabrication details shown are pre-approved by UC Davis Health. Any variance requests are to be provided as detail drawings to UC Davis Health for review and approval. The mounting methods shown on these pages have been developed for this sign program as a standard. Unique site conditions and local codes may require additional hardware or mounting fixtures not shown. In California Hospitals, HCAI requires that signs over 20 lbs. are attached to pre-installed bracing from the structure above for ceiling attached signs or wall backing for wall mounted signs. Sign Consultant should field verify sign locations and conditions or coordinate with the design team in order to evaluate the built conditions. If needed, Sign Consultant should coordinate with the project team architect or structural engineer for bracing or backing details in order to submit appropriate mounting methods for approval by HCAI and the AHJ prior to fabrication and installation.