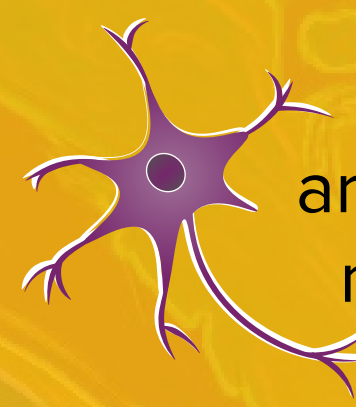




Psychiatric conditions
(like depression, substance use disorder, and PTSD) and **developmental conditions**
(like schizophrenia and autism) **change the brain's structure.**



Neurons
are the cells that transmit messages in the brain.

Neuroplasticity

is the brain's ability to adapt to change by forming new connections.



Psychedelic drugs like **LSD** and **MDMA**



promote neuroplasticity and neuron growth.

These drugs could help treat conditions that change brain structure, but **use is limited due to hallucinogenic properties & risk of heart damage.**

We engineered new, **non-hallucinogenic** versions of these drugs to increase safety while still providing these therapeutic effects.



TBG

Drug similar to ibogaine and 5-MeO-DMT
Therapeutic effect in models of depression and substance use disorders

Not yet tested in humans

AAZ

Drug similar to MDMA

Long-lasting antidepressant effects

No stimulant effects

Currently being tested to treat PTSD & social anxiety in autism