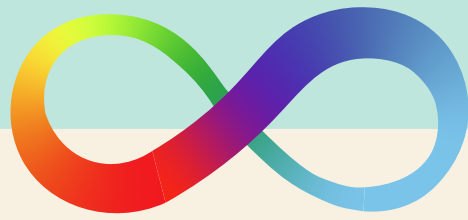


THE HEALTH OF AUTISTIC COLLEGE STUDENTS COMPARED TO THEIR NEUROTYPICAL PEERS

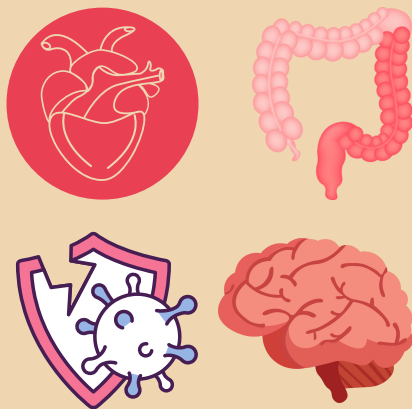


Autism alone raises the risk of poor physical and mental health in college students.

Students on the spectrum are...

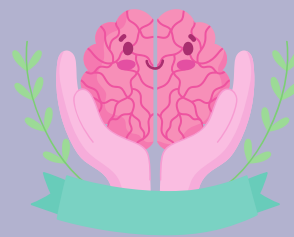
PHYSICAL HEALTH

1.81x
more likely to report worse physical health compared neurotypical students.



MENTAL HEALTH

2.21x
more likely to report worse mental health compared neurotypical students.



DEPRESSION

1.16x
more likely to report depression compared neurotypical students.



ANXIETY

0.89x
more likely to report anxiety compared neurotypical students.



SLEEP DEPRIVATION

0.36x
less likely to report sleep deprivation compared neurotypical students.



BINGE DRINKING

0.65x
less likely to report binge drinking compared neurotypical students.

