

PEDIATRIC ASTHMA

Pediatric Asthma Score

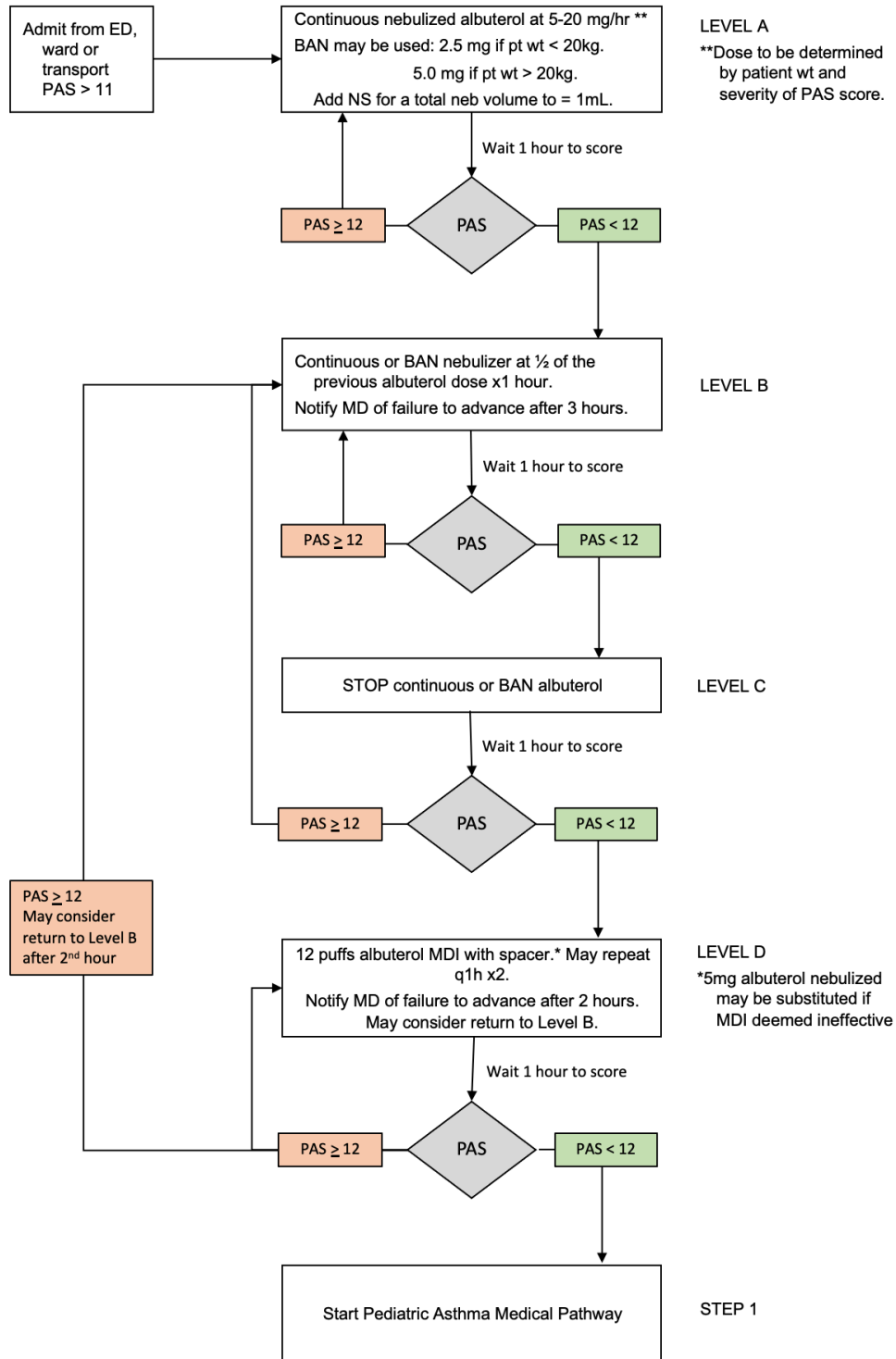
- Values are added to obtain a total score between 5 and 15.
 - Scores of 5-7 indicate mild asthma exacerbation
 - Scores of 8-11 indicate moderate asthma exacerbation
 - Scores of 12-15 indicate severe asthma exacerbation

SCORE	1	2	3
Respiratory Rate			
2-3 years	≤34	35-39	≥40
4-5 years	≤30	31-35	≥36
6-12 years	≤26	27-30	≥31
>12 years	≤23	24-27	≥28
Oxygen Requirement	>95% on room air	90-95% on room air	<90% on room air or on any oxygen
Auscultation	Normal breath sounds to end-expiratory wheeze only	Expiratory wheezing	Inspiratory and expiratory wheezing to diminished breath sounds
Retractions	None or intercostal	Intercostal & substernal	Intercostal, substernal, & supraclavicular
Dyspnea	Speaks in sentences, coos, & babbles	Speaks in partial sentences, short cry	Speaks in single words/short phrases/grunting

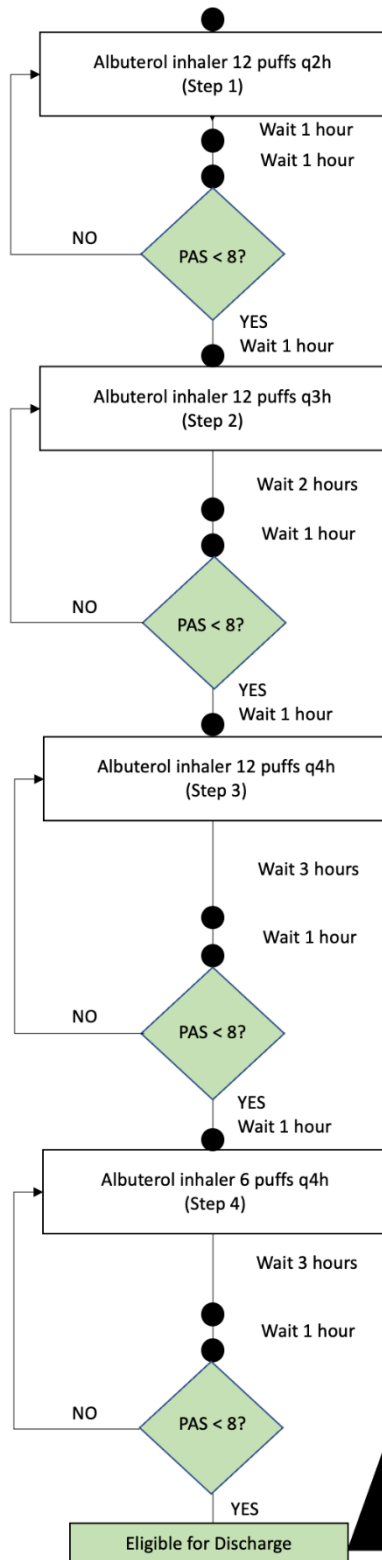


PICU ASTHMA PATHWAY

PEDIATRIC ASTHMA PICU PATHWAY



WARD ASTHMA PATHWAY



PEDIATRIC ASTHMA INPATIENT WARD PATHWAY

Notes:

● = Reassess with documentation of Pediatric Asthma Score (PAS)

For PAS 12-15 at any point:

- Give albuterol neb immediately
- Call Pediatric Hospitalist for re-assessment

For PAS 8-11:

- If not due for next treatment, revert to previous step of pathway (e.g. if on Step 2 but PAS 8-11 at 2 hours after treatment, go back to Step 1)
- If due for next treatment, continue current step of pathway (e.g. if on Step 2 but PAS 8-11 at 3 hours after treatment, continue with Step 2 until PAS <8 at 3 hours after treatment)
- If PAS remains 8-15 for 3 or more assessments, contact physician team for re-assessment.

Discharge Criteria:

- Step 4 PAS < 8
- Oxygen saturation \geq 90% on room air
- Adequate oral intake for hydration
- Completion of asthma education

Discharge Needs:

- Albuterol MDI 6 puffs q4h until sees PCP
- Spacer
- Controller medication (if appropriate)
- Steroid burst
- Asthma action plan
- Plan for follow-up 1-2days

References:

- National Asthma Education and Prevention Program. *Expert panel report 3: Guidelines for the diagnosis and management of asthma*. National Institutes of Health Pub. #08-5846. Bethesda, MD, 2007. Available at: <http://www.nhlbi.nih.gov/health-pro/guidelines/current/asthma-guidelines>
- Zorc, J., Reardon, A.M., Frankenberger, W. (2015). Asthma. In K.N. Shaw & R.G. Bachur (Eds.), *Fleisher & Ludwig's Textbook of Pediatric Emergency Medicine* (pp. 567-573). Philadelphia: Wolters Kluwer/Lippincott Williams and Wilkins Health.
- Kelly CS, Andersen CL, Pestian JP. Improved outcomes for hospitalized asthmatic children using a clinical pathway. *Ann Allergy Asthma Immunol*. 2000;84(5):509–516. et al.

Medical Legal Disclaimer:

Welcome to the UC Davis Health, Department of Pediatrics, Clinical Practice Guidelines Website. All health and health-related information contained within the Site is intended chiefly for use as a resource by the Department's clinical staff and trainees in the course and scope of their approved functions/activities (although it may be accessible by others via the internet). This Site is not intended to be used as a substitute for the exercise of independent professional judgment. These clinical pathways are intended to be a guide for practitioners and may need to be adapted for each specific patient based on the practitioner's professional judgment, consideration of any unique circumstances, the needs of each patient and their family, and/or the availability of various resources at the health care institution where the patient is located. Efforts are made to ensure that the material within this Site is accurate and timely but is provided without warranty for quality or accuracy. The Regents of the University of California; University of California, Davis; University of California, Davis, Health nor any other contributing author is responsible for any errors or omissions in any information provided or the results obtained from the use of such information. Some pages within this Site, for the convenience of users, are linked to or may refer to websites not managed by UC Davis Health. UC Davis Health does not control or take responsibility for the content of these websites, and the views and opinions of the documents in this Site do not imply endorsement or credibility of the service, information or product offered through the linked sites by UC Davis Health. UC Davis Health provides limited personal permission to use the Site. This Site is limited in that you may not:

- Use, download or print material from this site for commercial use such as selling, creating course packets, or posting information on another website.
- Change or delete propriety notices from material downloaded or printed from it. · Post or transmit any unlawful, threatening, libelous, defamatory, obscene, scandalous, inflammatory, pornographic, or profane material, any propriety information belonging to others or any material that could be deemed as or encourage criminal activity, give rise to civil liability, or otherwise violate the law.
- Use the Site in a manner contrary to any applicable law.

You should assume that everything you see or read on this Site is copyrighted by University of California or others unless otherwise noted. You may download information from this Site as long as it is not used for commercial purposes, and you retain the proprietary notices. You may not use, modify, make multiple copies, or distribute or transmit the contents of this Site for public or commercial purposes without the express consent of UC Davis Health.