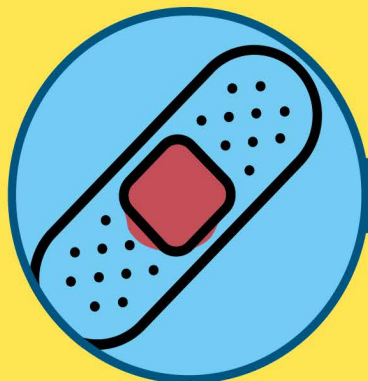


KNOW WHERE IT GOES!

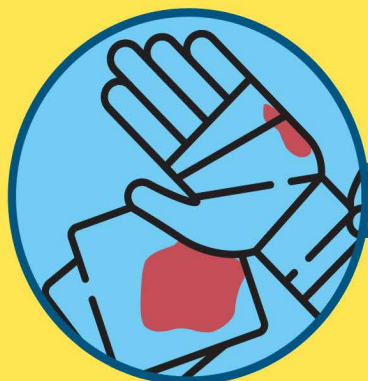
# RED BIN ITEMS ONLY

These items go in the RED BIN / RED BAG to be disposed of as biohazardous waste



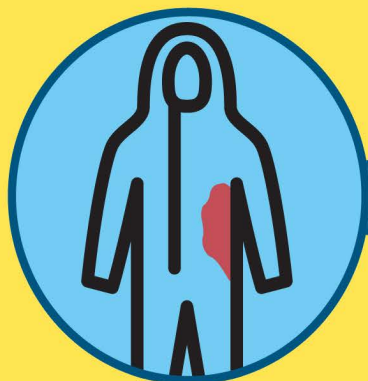
BLOODY BANDAGES

BLOODY GLOVES



BLOODY GAUZE

BLOODY PLASTIC TUBING



CONTAMINATED PPE



Contact EH&S **before** implementing any process change related to this information!