

## Remote Access VPN with Start Before Logon (SBL)- Windows 10

These are the “How To” instructions for installing, using, and uninstalling the AnyConnect VPN client with Start Before Logon (SBL) feature. SBL is available for VPN users who need to connect to the VPN before the “Windows log on.” This method allows Windows to run scripts and map the network drives (shared and home drives) on UCDH managed computers. Refer to the “Troubleshooting” section for troubleshooting information.

### CONTENTS

---

HOW TO INSTALL THE ANYCONNECT CLIENT WITH SBL.....	1
HOW TO CONNECT TO THE REMOTE ACCESS VPN WITH SBL .....	3
HOW TO UNINSTALL THE ANYCONNECT CLIENT IN WINDOWS 10.....	6

---

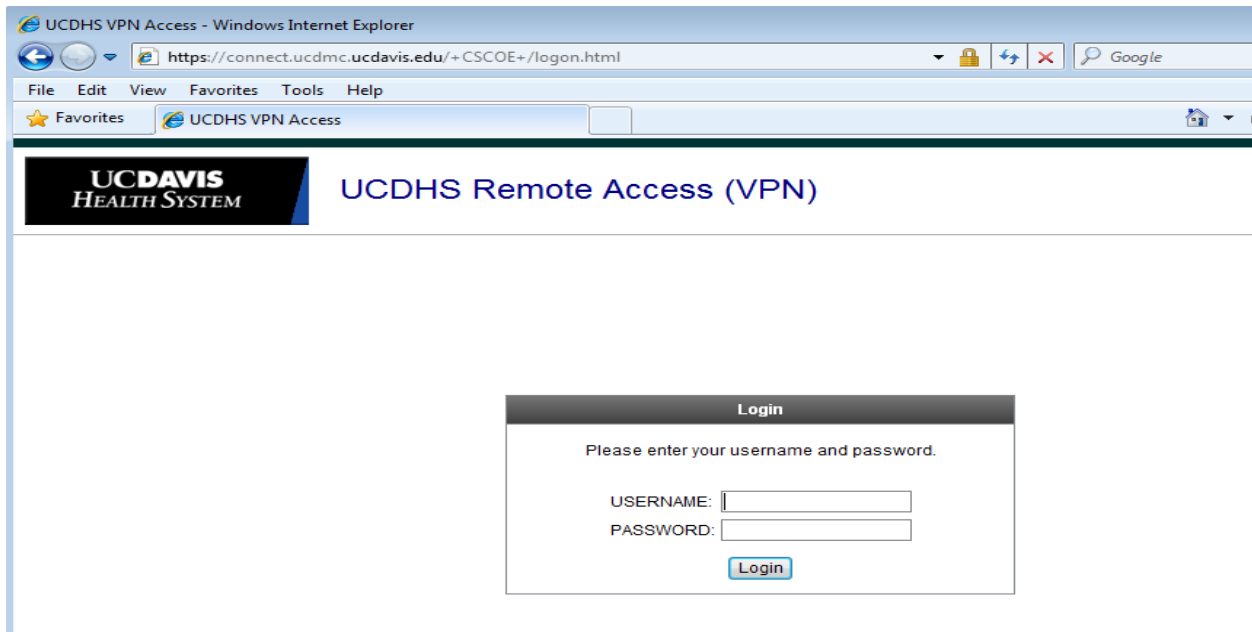
### HOW TO INSTALL THE ANYCONNECT CLIENT WITH SBL

---

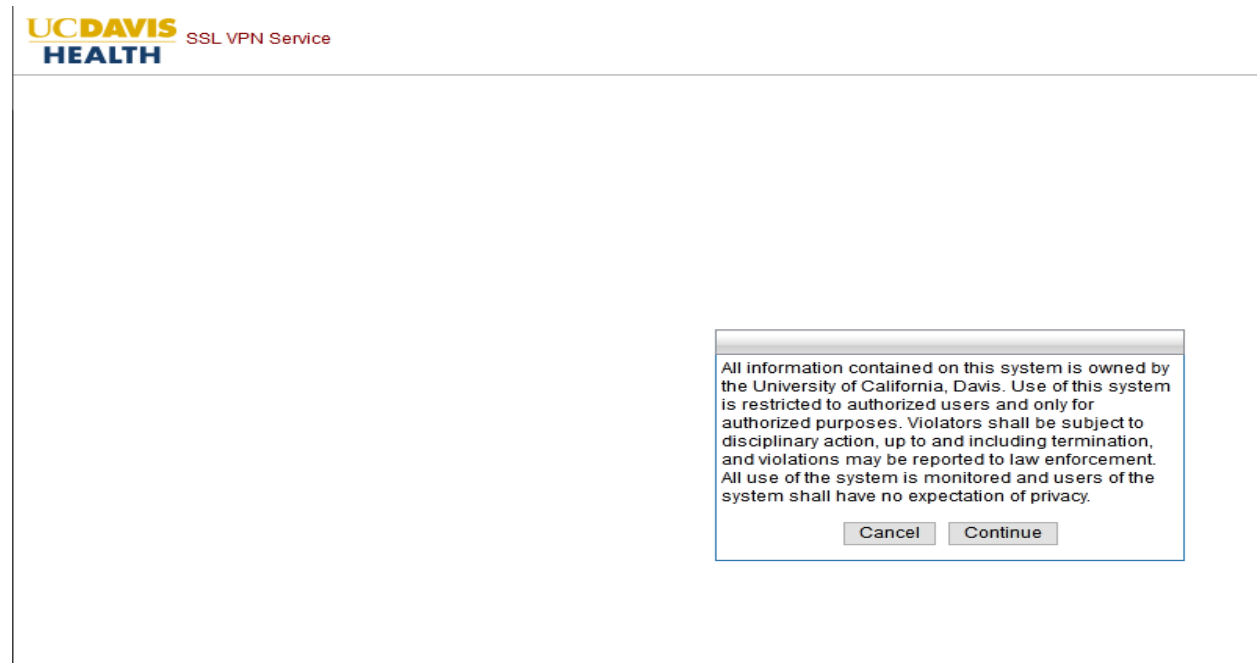
Step 1- go to <https://connect.ucdmc.ucdavis.edu/sbl>

- a. This website is not accessible from the intranet. You must be outside our network eg. home, Guest Wireless, Starbucks, etc. UCDH issued laptops can install the VPN with the SBL feature from the Guest Wireless but cannot connect to VPN with the SBL feature from Guest Wireless.
- b. This installation process tries to use **ActiveX**, then **Java**- details provided in Step 4.

Step 2- You will be prompted to enter your username and password; use your Active Directory/HS/Citrix credentials. See the screenshot below.



Step 3- Click Continue





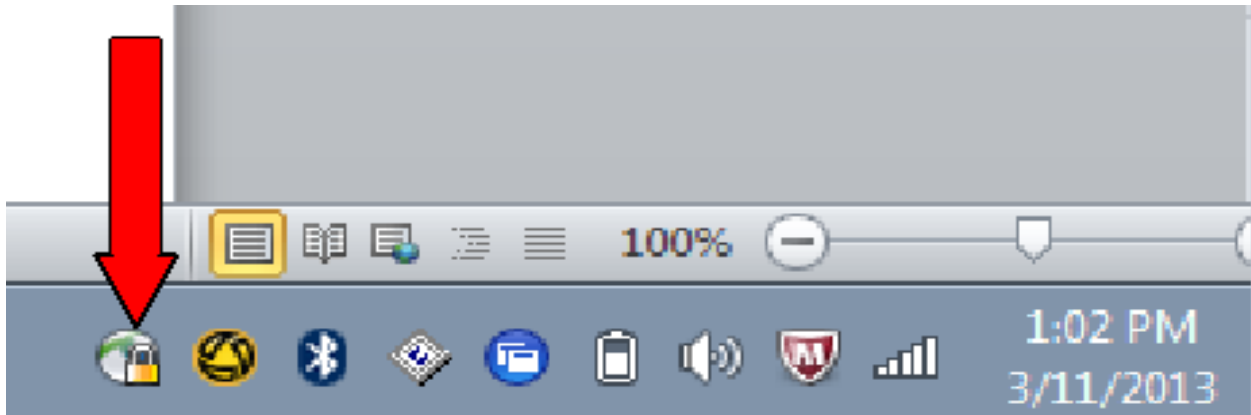
Step 4- No action required. Do not interrupt the process; it might take two to three minutes. Sometimes you might get a message that says, "Using ActiveX for Installation- VPN connection establishment failed". This message indicates that the installation failed using ActiveX; next, it tries installing using Java. Self-installation tries ActiveX and then Java. See the screenshot below.

- a. If the installation fails,
  - i. verify Java is installed and is the latest version
  - ii. add an exception in Java for "https://connect.ucdmc.ucdavis.edu"
  - iii. reboot the computer
  - iv. Use Internet Explorer.



Step 5 – Q. How to check that you are connected?

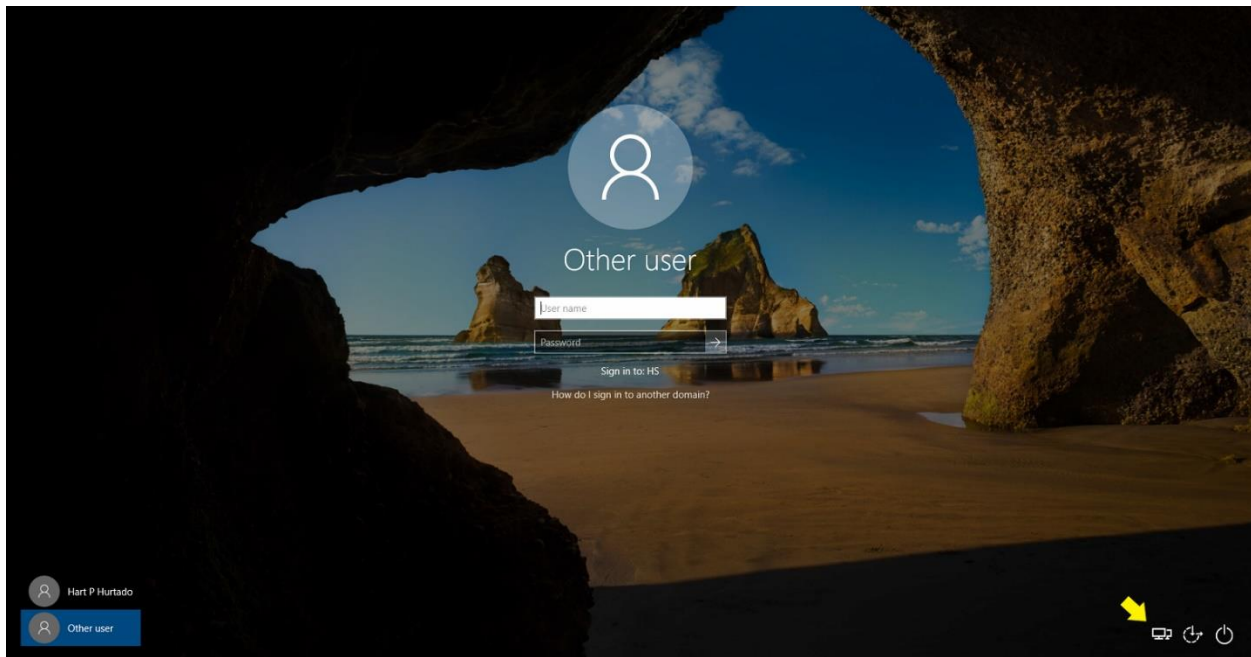
- A. Check the Anyconnect icon . A locked padlock sign  means you are connected to VPN.



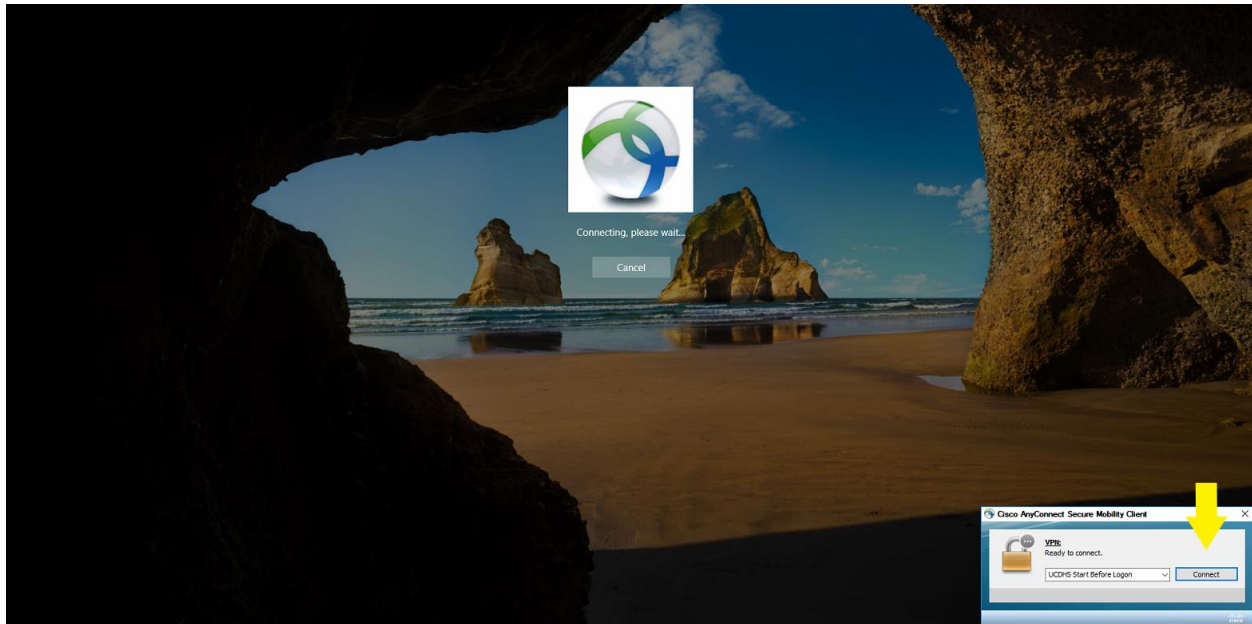
## HOW TO CONNECT TO THE REMOTE ACCESS VPN WITH SBL

These are the step-by-step instructions on how to log into the SBL VPN before logging into Windows.

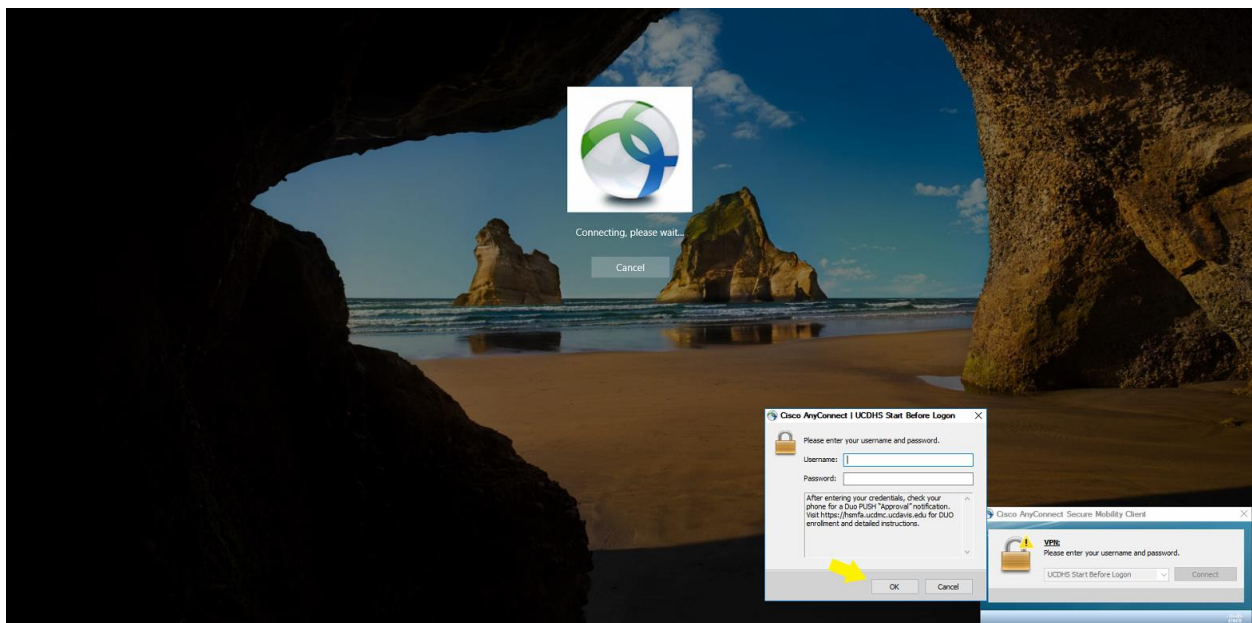
Step 1 – Click the Network icon. See the screenshot below.



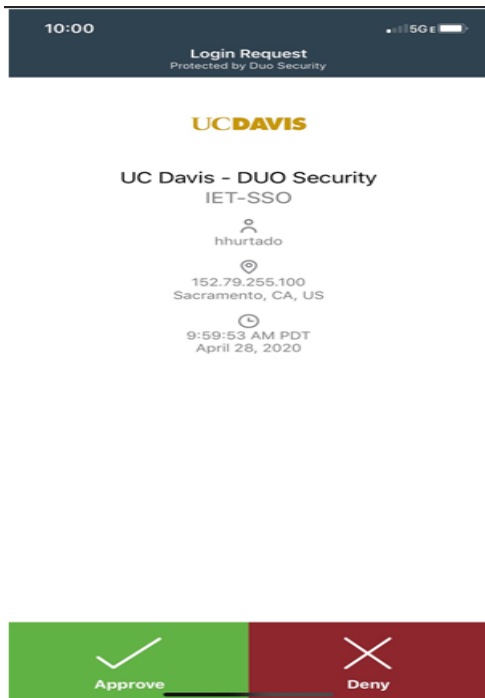
Step 2 – Click “Connect”. See the screenshot below.



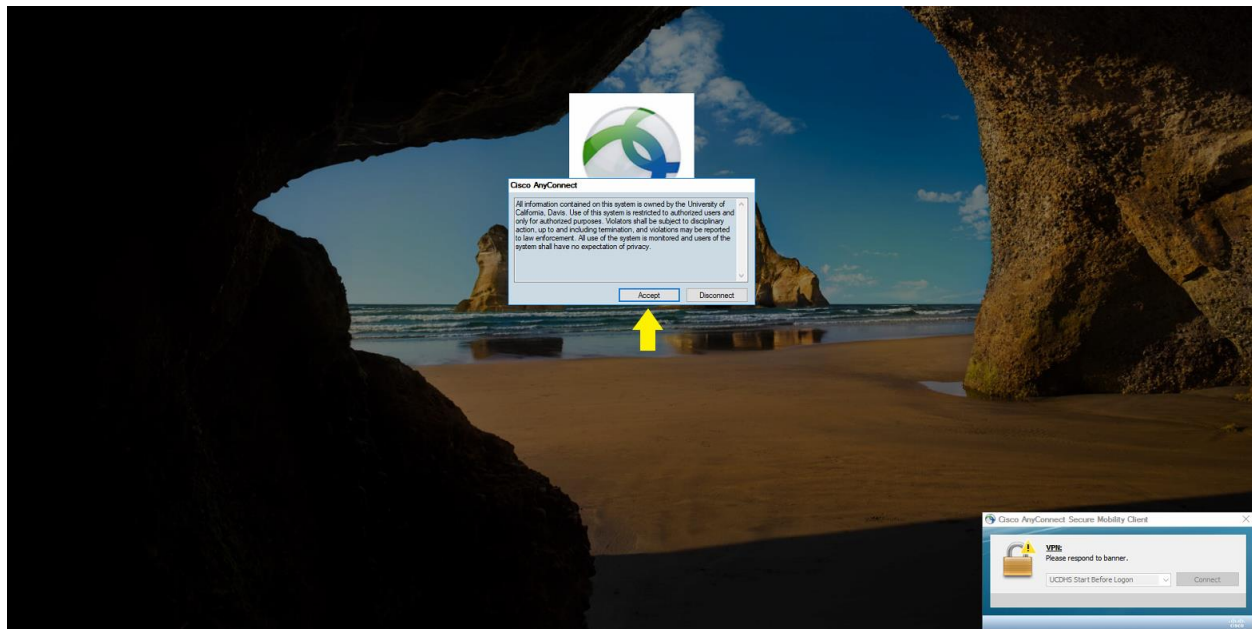
Step 3 – Enter your AD credentials and click OK. See the screenshot below.



Step 4 – Approve the DUO push on your mobile device. See the screenshot below.



Step 5 – Click “Accept”. See the screenshot below.



Step 6 – Once the VPN has established connection, log into Windows as normal.

## HOW TO UNINSTALL THE ANYCONNECT CLIENT IN WINDOWS 10

---

1. Click **Start**
2. Select **Control Panel**
3. Select **Programs**
4. Click **Programs and Features**
5. Select the "Cisco AnyConnect Secure Mobility Client" by clicking on it, and then click the **Uninstall** button.
6. If you are not using AnyConnect client for any other VPN connection, you can delete "Cisco AnyConnect Secure Mobility Client" folder under C:\ProgramData\Cisco