

## REMOTE ACCESS VPN- START BEFORE LOGON (SBL) FEATURE WINDOWS 7

---

These are the “How To” instructions for installing, uninstalling, and using the AnyConnect VPN client with the Start Before Logon (SBL) feature. SBL is available to VPN users who need to connect to the VPN before the Windows log on. This allows Windows to run scripts and map drives. Refer to the “Troubleshooting” section for troubleshooting information.

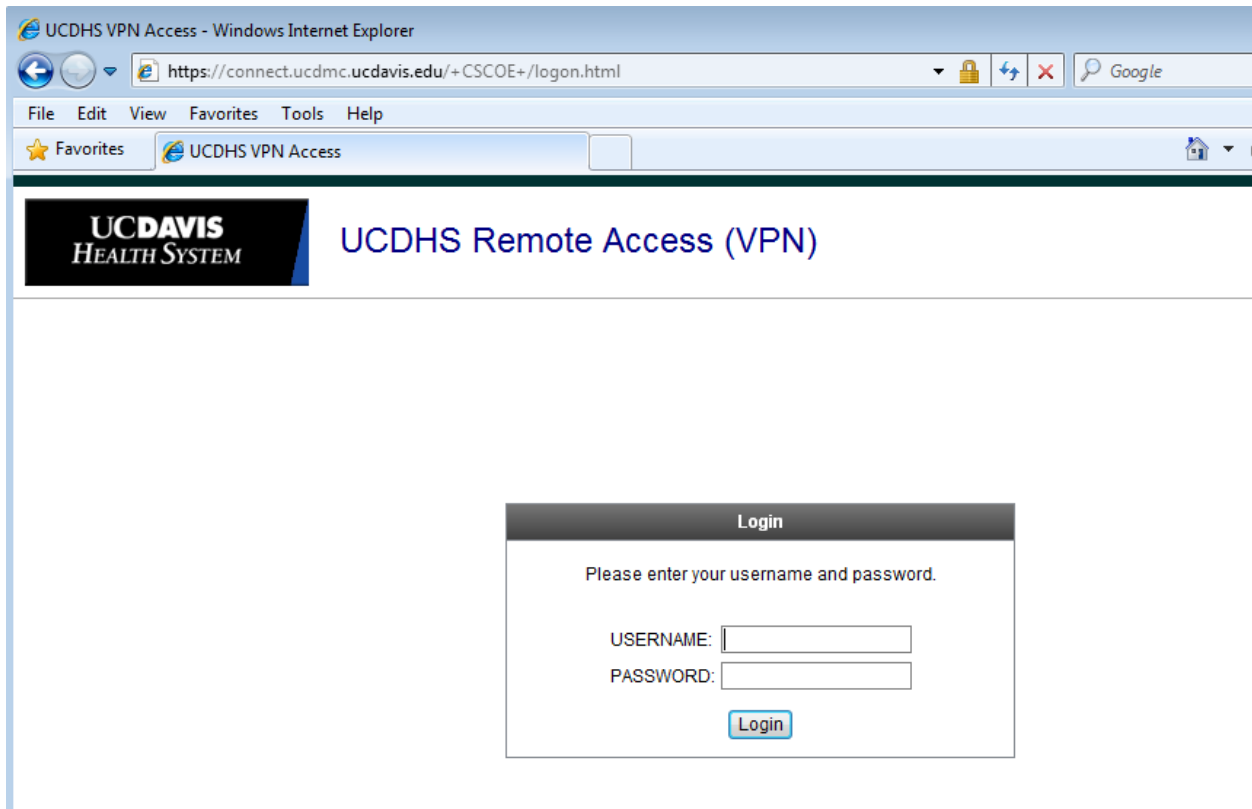
### HOW TO INSTALL ANYCONNECT CLIENT WITH SBL

---

Step 1- go to <https://connect.ucdmc.ucdavis.edu/sbl>

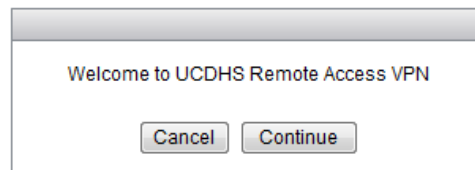
Note- This website is not accessible from the intranet. You have to be outside our network eg. At home, Guest Wireless, Starbucks, etc.

Step 2- You will be prompted to enter your username and password. Use your Active Directory/HS/citrix credentials. See screenshot below.

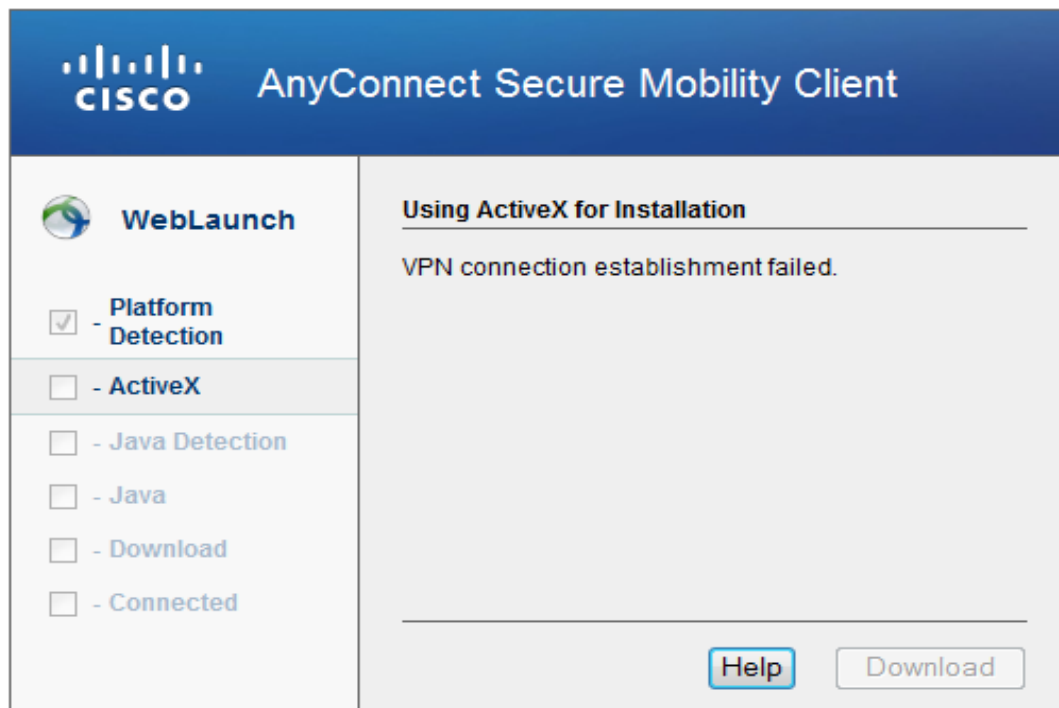


The screenshot shows a Windows Internet Explorer browser window. The address bar displays the URL <https://connect.ucdmc.ucdavis.edu/+CSCOE+/logon.html>. The browser's menu bar includes File, Edit, View, Favorites, Tools, and Help. A Favorites bar is visible below the menu bar, containing a single entry for "UCDHS VPN Access". The main content area of the browser displays the UCDHS Remote Access (VPN) login page. At the top left of the page is the UCDAVIS HEALTH SYSTEM logo. To the right of the logo is the text "UCDHS Remote Access (VPN)". Below this header is a large, empty white space. In the center of the page, there is a login form with a dark grey header containing the word "Login". Below the header, the text "Please enter your username and password." is displayed. Underneath this text are two input fields: "USERNAME:" followed by a text box, and "PASSWORD:" followed by a text box. Below the password field is a blue "Login" button.



Step 3 – Click Continue

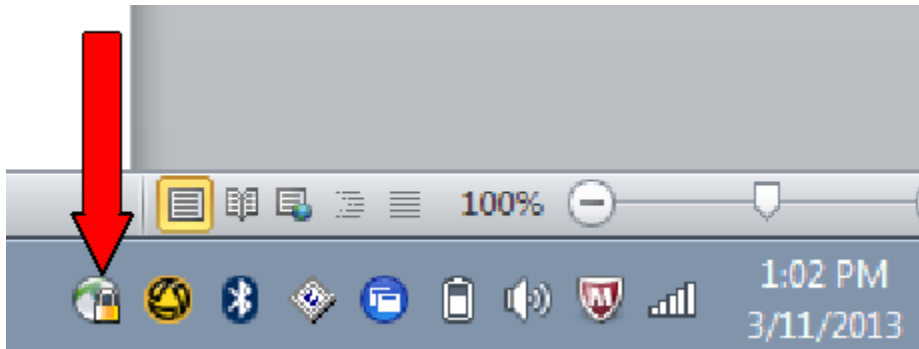


Step 4- No action required. The process might take two to three minutes. Do not interrupt the process. Sometimes you might get a message that says "Using ActiveX for Installation- VPN connection establishment failed". This message indicates that the installation failed using ActiveX. This doesn't mean the whole installation failed. Self-installation tries ActiveX and then Java. See screenshot below.



Step 5 – Q. How to check that you are connected?

- A. Check the Anyconnect icon . A locked padlock sign  means you are connected to VPN.



---

### HOW TO CONNECT TO VPN BEFORE THE WINDOWS LOG ON

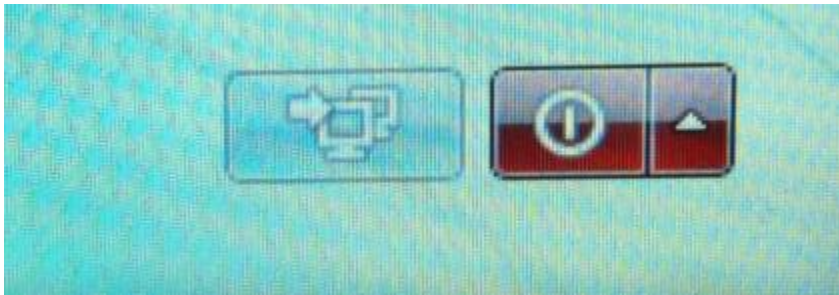
---

This instruction is for Windows and shows step by step how to log on to the VPN before logging on to Windows.

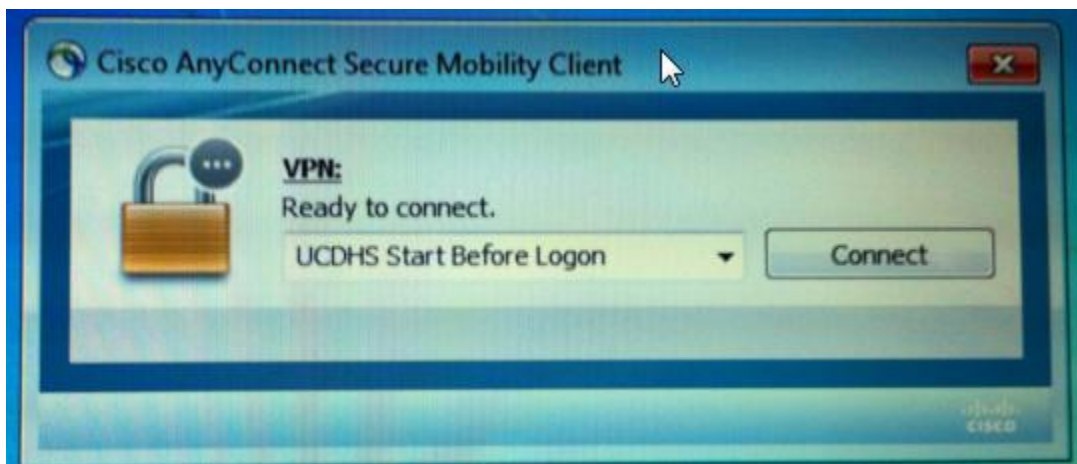
Step 1- Click on switch User at the log in Window



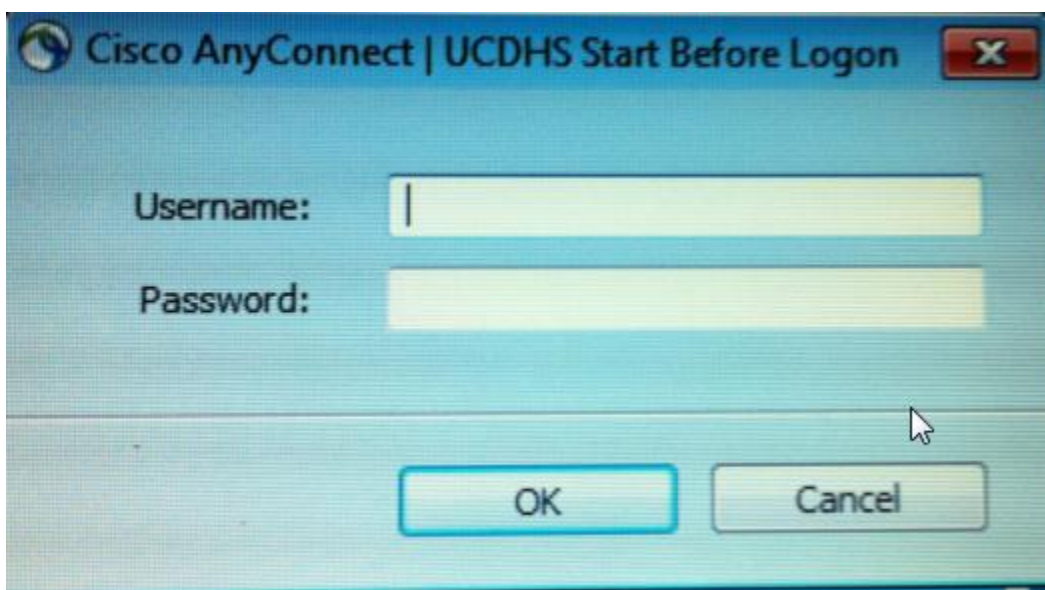
Step 2- Click on the computer icon on the bottom right of the screen



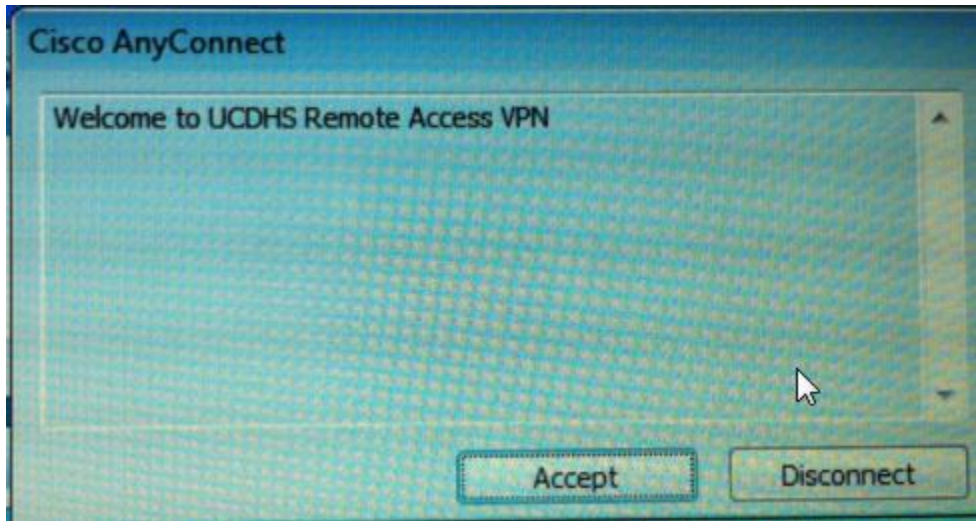
Step 3- Make sure you are connecting to "UCDHS Start Before Logon". Click "Connect".



Step 4- Enter your Active Directory/HS/Citrix credentials.



Step 5- Click "Accept"



Step 6- After the VPN is connected, log in to Windows.

---

## HOW TO UNINSTALL ANYCONNECT CLIENT- WINDOWS 7

1. Click **Start**
2. Select **Control Panel**
3. Select **Programs**
4. Click **Programs and Features**
5. Select the "Cisco AnyConnect Secure Mobility Client" by clicking on it, and then click the **Uninstall** button.