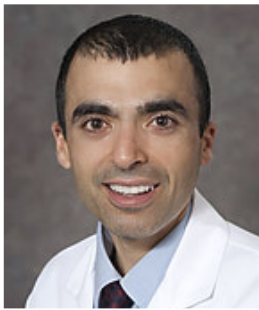


Cyrus Bateni, M.D.

Clinical Interests	I am fellowship trained in both musculoskeletal radiology and breast imaging. I am committed toward the education of medical students, residents, and fellows. I have an interest in image guided interventions.
Specialty	Radiology - Musculoskeletal Radiology, Radiology - Breast Imaging
Department	Radiology
Division	Breast Imaging Musculoskeletal Radiology
Center/Program Affiliation	UC Davis Comprehensive Cancer Center
Address/Phone	Lawrence J. Ellison Ambulatory Care Center, Radiology, 4860 Y St. Suite 3100 Sacramento, CA 95817
Additional Phone	Phone: 800-4-UCDAVIS (800-482-3284)
Education	M.D., Drexel University College of Medicine, Philadelphia PA 2006 B.A., UC Berkeley, Berkeley CA 2001
Internships	Internal Medicine, St. Joseph's Hospital and Medical Center, Phoenix AZ 2006-2007
Residency	Diagnostic Radiology, UC Davis Medical Center, Sacramento CA 2007-2011
Fellowships	Breast Imaging, UC Davis Medical Center, Sacramento CA 2012-2013 Musculoskeletal Imaging, University of Washington, Seattle WA 2011-2012
Board Certifications	American Board of Radiology CA Medical Board, License California Radiography and Fluoroscopy X-Ray Supervisor and Operator ACLS
Professional Memberships	American College of Radiology
Honors and Awards	Junior Faculty Teaching Award, Department of Radiology, UC Davis, 2017 Radiology Fellow Excellence in Teaching Award, UC Davis, 2013 Excellence in Teaching Musculoskeletal Radiology to Residents, 2012 Excellence in Professionalism, 2011
Select Recent Publications	Shaw CB, Foster HB, Borgess M, Boutin RD, Bateni C, Boonsri P, Bayne CO, Szabo RM, Nayak KS, Chaudhari AJ. Real-time three-dimensional MRI for the assessment of dynamic carpal



Cyrus Bateni, M.D.

instability. PLOS ONE 14(9):e0222704. <https://doi.org/10.1371/journal.pone.0222704>

Hodges CT, Shelton TJ, Bateni CP, Henrichon SS, Skaggs AW, Boutin RD, Lee CA, Haus, BM, Marder RA. The Medial Epicondyle of the Distal Femur is the Optimal Location for MRI Measurement of Semitendinosus and Gracilis Tendon Cross-Sectional Area. *Knee Surgery, Sports Traumatology, Arthroscopy*. 2019;27:3298. <https://doi.org/10.1007/s00167-019-05421-6>

Bateni C, Kahlon S, Kreulen C. Appropriate MRI evaluation of Lisfranc ligaments: how to avoid missing ligamentous Lisfranc injuries. *Techniques in Foot and Ankle Surgery*. 2019 March;18(1): 29-36.

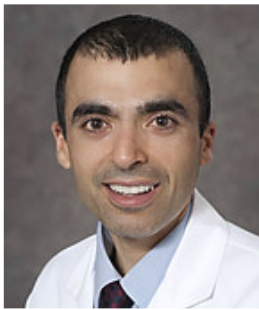
Golshani B, Bamrunchart S, Bateni CP. Radiographic evaluation of meniscal extrusion. *Cureus*. 2018 Sep 6;10(9):e3262. PMID: 30430051

Judge SJ, Plescia TA, Bateni CP, Darrow MA, Evans CP, Canter RJ. Retroperitoneal extra medullary hematopoietic pseudotumor in ataxia-telangiectasia. *Rare Tumors*. 2018;Vol 10:1-5.

Boutin RD, Bamrunchart S, Bateni CP, Beavers DP, Beavers KM, Meehan JP, Lenchik L. CT of patients with hip fracture: muscle size and attenuation help predict mortality. *AJR Am J Roentgenol*. 2017 June;208:W208-215.

Boutin RD, Netto AP, Nakamura D, Bateni C, Szabo RM, Cronin M, Foster B, Barfield WR, Seibert JA, Chaudhari AJ. "Knuckle cracking": can blinded observers detect changes with physical examination and sonography? *Clin Orthop Relat Res*. 2017 Apr;475(4):1265-1271.

Boutin RD, Kaptuch JM, Bateni CP, Chalfant JS, Yao L. Influence of intravenous contrast administration on CT measures of muscle and bone attenuation: implications for sarcopenia and osteoporosis evaluation. *AJR Am J Roentgenol*. 2016 Nov;207:1046-1054.



Cyrus Bateni, M.D.

Goodman LF, Bateni CP, Bishop JW, Canter RJ. Delayed phlegmon with gallstone fragments masquerading as soft tissue sarcoma. J Surg Case Rep. 2016 Jun 22;2016(6).

Lu A, Tse G, Lee P, Shen PY, Bateni C, Bobinski M. Glioblastoma multiforme. ACR Case of the Day. American College of Radiology. January 25, 2016 Web.

© 2019 UC Regents